

Issue: Cube: Disappeared Network Card Issue

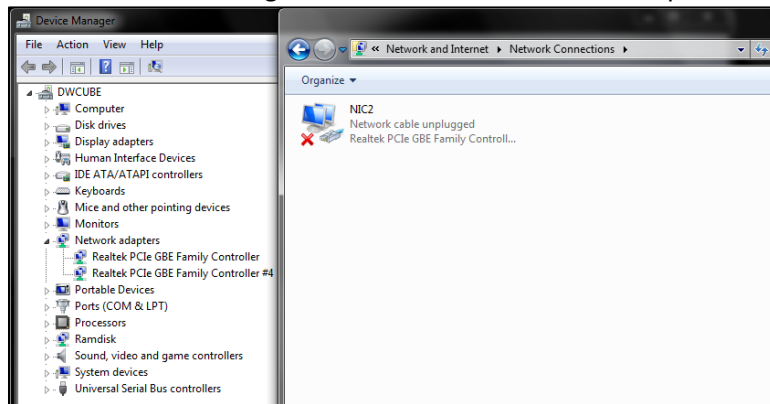
Issue:

Target Device

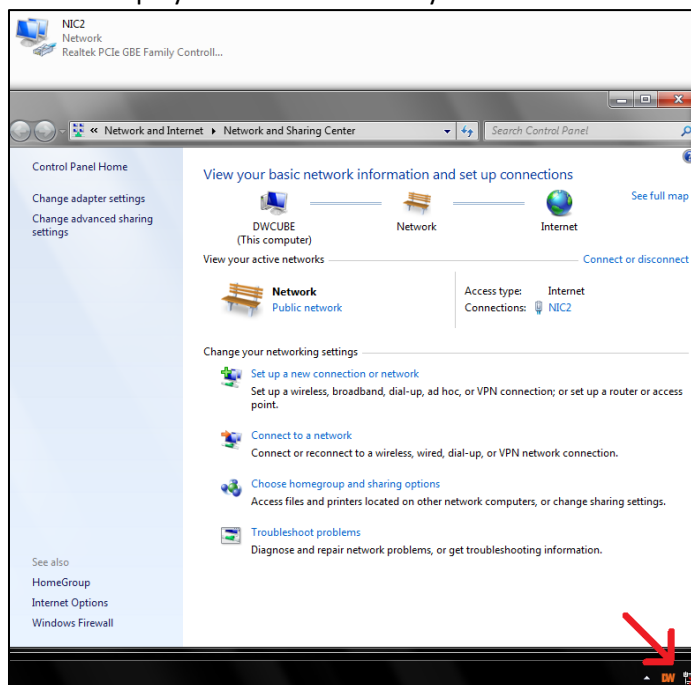
- Cube with Windows embedded

Symptom

- Two network adapters on Cube seem to work okay: Both obtain IP automatically and transfer data.
- 'Network Connections' window only shows ONE adapter – 'NIC2' (PCI-Express one).
- Onboard network adapter ('NIC1' from 'Network Connections' and 'Realtek~ Controller' from 'Device Manager') is not visible.
- 'Device Manager' does show TWO network adapters.



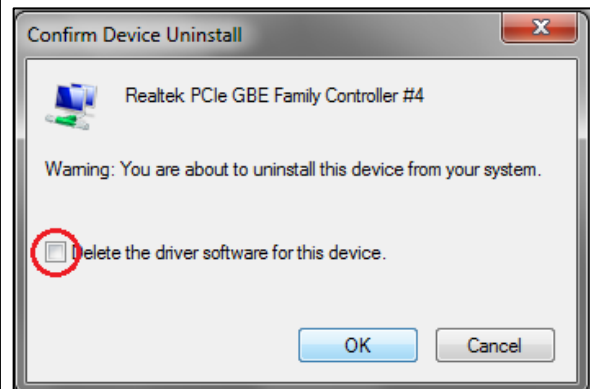
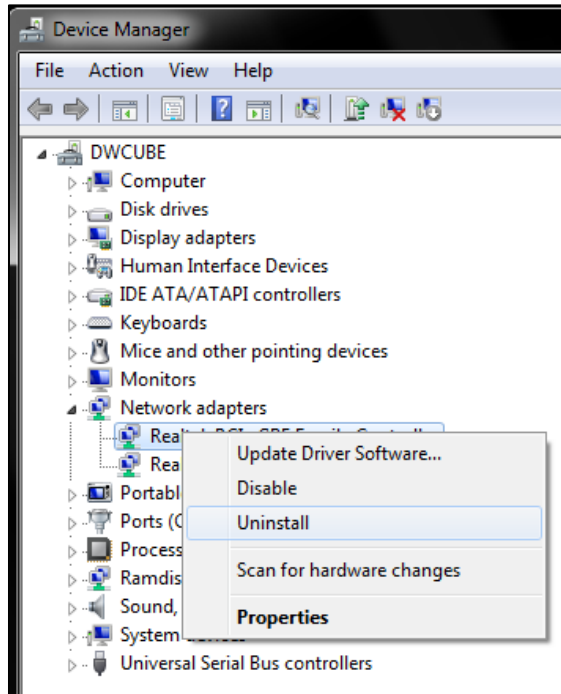
- Even though both adapters are connected, Windows taskbar network status icon is displayed as there is not any connection.



Solution:

Solution

- **Uninstall both network adapters** from 'Device Manager' then run hardware detection to **re-add** uninstalled network adapters.
- ** Do NOT check 'Delete the driver software for this device' when uninstalling.



Re-adding network adapters

