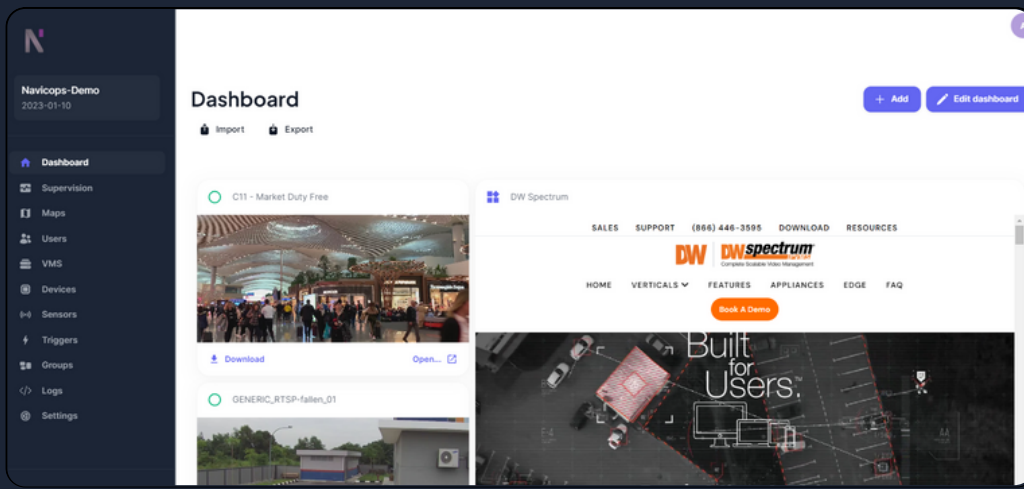




# NAVICOPS

SMARTEN YOUR INSTALLATION

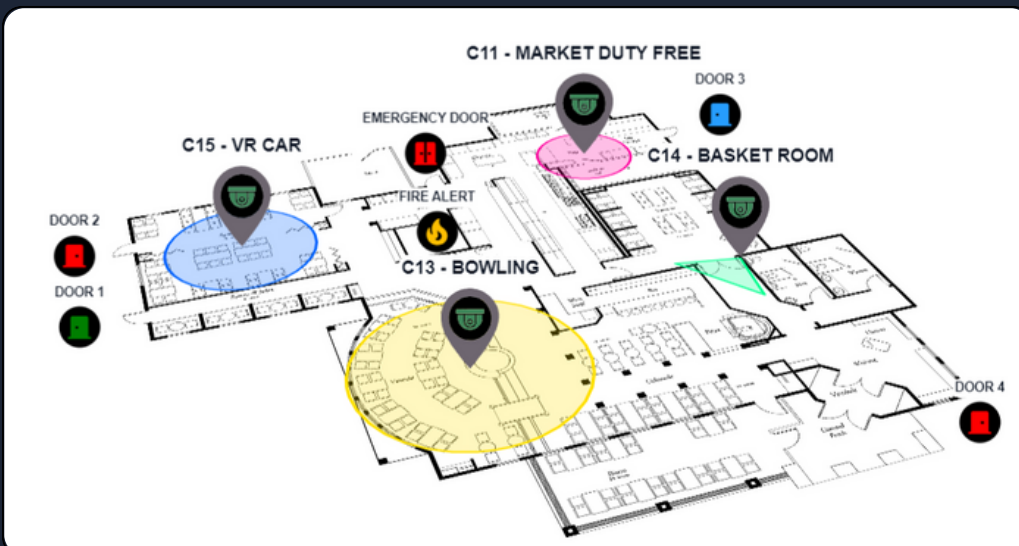
Navicops is a comprehensive software package designed for management, supervision, and mapping purposes. You have the ability to create intelligent maps using various elements such as images, PDFs, and satellite maps from Bing. Navicops allows you to oversee your IP devices and ensure the stability of your installation.



We have introduced a customizable dashboard for device monitoring and a dedicated web page for managing other systems.

An user-friendly interface with intuitive control and management options. You can conveniently access the latest recorded image from your camera, open the maps linked to the camera, download a preview, and effortlessly check the status of each device.

These features empower you with seamless control and real-time insights for effective management.



## FEATURES

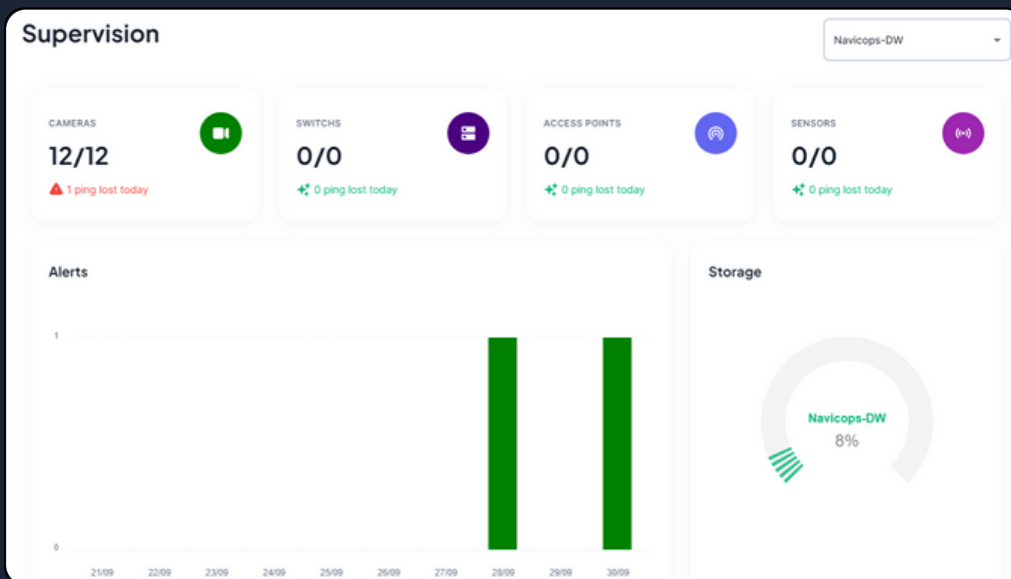
- Customizable dashboard (Organize your dashboard to suit your needs)
- Embedded Browser (Add and browse a web page directly from the Dashboard)
- Device auto-discovery (Connect your DW server and use your various connected devices directly in Navicops)
- Webpage auto-discovery (Connect your DW server and use your Webpage directly in Navicops)
- Live thumbnails (Get a live preview of your cameras on the map)
- Custom user role (Admin / Editor / Viewer)
- Soft Triggers (Digital output to control everything. Connect with a door, a barrer, a light or something. People can remotely click a button to trigger it and make it work directly from maps)
- I/O Sensors (Connect all your glass breakage, temperature, humidity and door opening detectors and check their status directly on the map. Status : **ON** / **OFF** / **BYPASS**)
- Ping Sensors (Monitor any network device with a simple ping, and monitor its status live on the map)
- Group system (Control all your devices, sensors, etc. together)



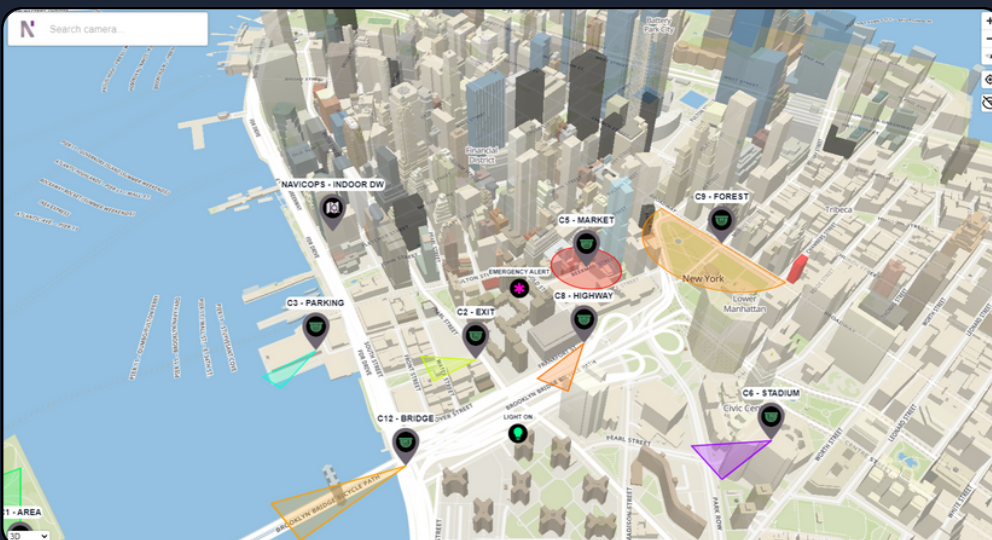
# NAVICOPS

SMARTEN YOUR INSTALLATION

Our supervision interface, you can conveniently cross-reference information and monitor the status of your diverse range of devices, enabling you to promptly identify any issues within your installation. This intuitive interface empowers you to quickly grasp and address problems that may arise. Moreover, you have the ability to generate comprehensive status reports, whether for your own evaluation or to provide valuable insights to your customers.



You have the ability to effortlessly incorporate your devices, define the field of view for your cameras, and assign them distinct colors. Additionally, you can seamlessly integrate other maps, allowing for smooth navigation. Experience enhanced convenience as you manage and visualize your devices, sensors, soft trigger and maps within a unified interface. You can generate a diverse range of maps using .PNG, .PDF files, as well as data from Bing (2D/3D/Satellite views).



- Supervision system
- Add Local & Cloud VMS (Connect your servers from a Local / Public IP or simply with the CLOUD ID)
- Server API (We have developed an API system to control your sensors, groups, status, etc...)
- Multi-language
- Customizable mapping
- Import from PDF / Image
- Satellite / 3D / 2D Tiles
- Event alarm on map (Synchronize with VMS events)
- Live preview
- Multilevels
- Customizable FoV
- Import KML (from Google Earth)
- Camera Nearby (Easily navigate to a nearby camera)
- Open device from map
- Notification system
- Open Webpage from map

Server Operating System Client Supported Browsers

