

To: DW® Customers
 Date: December 17, 2018
 Re: How to add DW-CP04 to ExacqVision NVR System

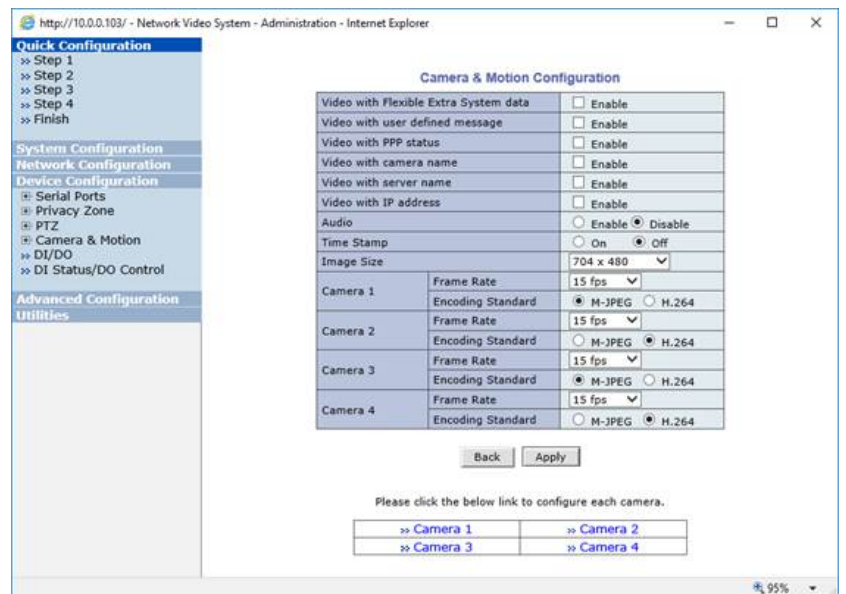
How to add the Compressor™ DW-CP04 to ExacqVision NVR System

1. Configure the DW-CP04 (via the web viewer):

- Assign the encoder an IP address.
- Enable RTP/RTSP.
- Enable motion detection.
- Configure image size, frame rate and encoding standard.

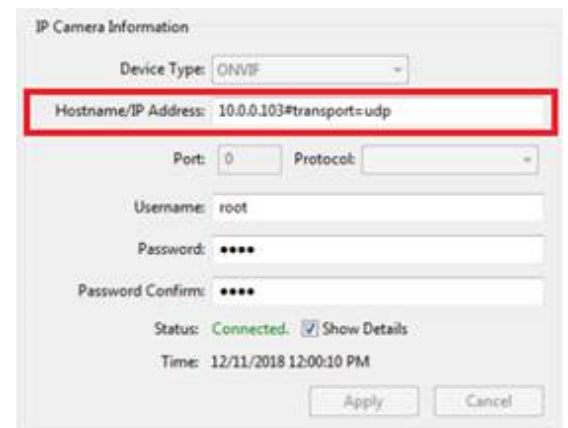
* The resolution should be kept the same on all channels.

* FPS and encoding type can be individually set but it is recommended to have them synced.



2. Add the encoder as a manually added camera in the ExacqVision VMS:

- Go to 'Add IP Cameras' on the configuration window in the ExacqVision settings menu.
- Click 'New' to add a new camera.
- Under device type, select ONVIF.
- Type in Hostname/ IP Address with "#transport=UDP" as example below
- (Example) If IP address of the DW-CP04 is 10.0.0.103
10.0.0.103#transport=UDP
- Type in the username and password for the DW-CP04 (default is root / root)
- Click 'Apply'.



[Schedule a demo today >](#)

Learn how DW will increase your profitability.

☎ 866.446.3595 ✉ sales@dwcc.tv 🌐 www.digital-watchdog.com

3. Check the video stream and motion at the camera setting page as seen in the image below:



NOTE: If the DW-CP04 encoder's resolution or format are changed from the ExacQVision VMS, all channels will disconnect and will take about five (5) minutes to reconnect to the server.

If you are having trouble connecting the DW-CP04 with an ExecQVision NVR, make sure both the DW-CP04 encoder and the NVR have the latest firmware version.

For more information or technical support

DW technical support
Toll free: 866.446.3595
digital-watchdog.com/contact-tech-support/

Schedule a demo today >

Learn how DW will increase your profitability.

 866.446.3595  sales@dwcc.tv  www.digital-watchdog.com