

IP PRODUCT  
QUICK REFERENCE GUIDE

REV. 03/23



Ai analytics for IP cameras and Blackjack® servers



DW Spectrum® IPVMS



Blackjack® servers



VMAX® IP Plus™ NVRs driven by C3 CMS



SiteWatch™ perimeter protection appliances



MEGApix® Pano multi- and single-sensor wide view IP cameras

Built  
for  
Users.™



## SOFTWARE

### DW Spectrum® IPVMS

Elegantly easy, cutting-edge approach to video surveillance software, offering the lowest total cost of deployment and ownership on the market.

### DW mobile apps

DW mobile apps for iOS® and Android® allow you to view, playback and monitor your systems on a smartphone or tablet.

### DW Spectrum Mobile™

DW Spectrum mobile app for iOS and Android works seamlessly with any server running DW Spectrum IPVMS.

### C3™ CMS Remote management software

C3 is a groundbreaking, easy to use remote management software for DW VMAX® embedded analog and IP recorders.



## RECORDERS

### Blackjack® servers

Servers powered by DW Spectrum IPVMS provide unlimited scalability.

### Blackjack® Ai servers

Servers powered by DW Spectrum and IVA™ are purpose-built All-in-One NVR and analytic appliances.

### Blackjack Client™ workstation

The ultimate solution to monitoring multiple servers from a single location.

### VMAX® IP G4™ NVRs

NDAA-compliant, full-featured easy to use standalone PoE NVRs.



## CAMERAS

### MEGApix® Ai™ IP cameras

Ai deep learning with object detection and tracking.

### MEGApix IP cameras

MEGApix 4K, 8MP, 5MP, 4MP and 2.1MP/1080p IP cameras at real-time 30fps with powerful Intelligent Video Analytics (IVA).

### MEGApix Pano™ IP cameras

Single and multiple sensor, panoramic view cameras replace multiple cameras with a single installation.

### MEGApix Pano fisheye (hemispheric) IP cameras

5MP and 9MP fisheye cameras produce 180°, 270° and 360° views.

### MEGApix Flex™ IP cameras

User-configurable, multi-sensor cameras produce flexible views.

### MEGApix CaaS™ IP cameras

All-in-one camera as a system edge solutions require no server nor NVR.



## NETWORK APPLIANCES

### Compressor™ encoders

Compressor signal encoders convert all analog signals into IP streams.

### DW Spot™ monitoring module

Create instant public monitors from your surveillance system with DW Spot.

### SiteWatch™ perimeter protection

Advanced infrared, white light or hybrid illumination solutions for any application, laser and motion detectors and IP horn speaker upgrade any surveillance solution to the next level.

# Table of contents

---

DW Spectrum IP video management software (IPVMS) .....	4
Blackjack Ai servers .....	6
Blackjack servers .....	8
C3 central management software .....	12
VMAX IP G4 NDAA-compliant embedded network video recorder (NVR) .....	14
MEGApix Ai deep learning IP cameras .....	16
MEGApix Pano multi-sensor panoramic view IP cameras .....	19
MEGApix Pano fisheye IP cameras .....	20
MEGApix Flex user-configurable IP cameras .....	21
MEGApix IP cameras .....	22
MEGApix CaaS (Camera as a System) IP cameras .....	30
Camera accessories .....	32
SiteWatch perimeter protection .....	35
Network Appliances .....	38
Software and mobile apps .....	39
Camera part numbers table .....	39
DW channel partner program (CPP) .....	40
DW University online product certification.....	41

# IPVMS



Complete Scalable Video Management

- Apps for all operating systems. **Cloud enabled.**
- Automated. Intuitive. **Built for Users.**
- **Auto-discover devices** from hundreds of manufacturers.
- Open for developers. **Integrate anything.**

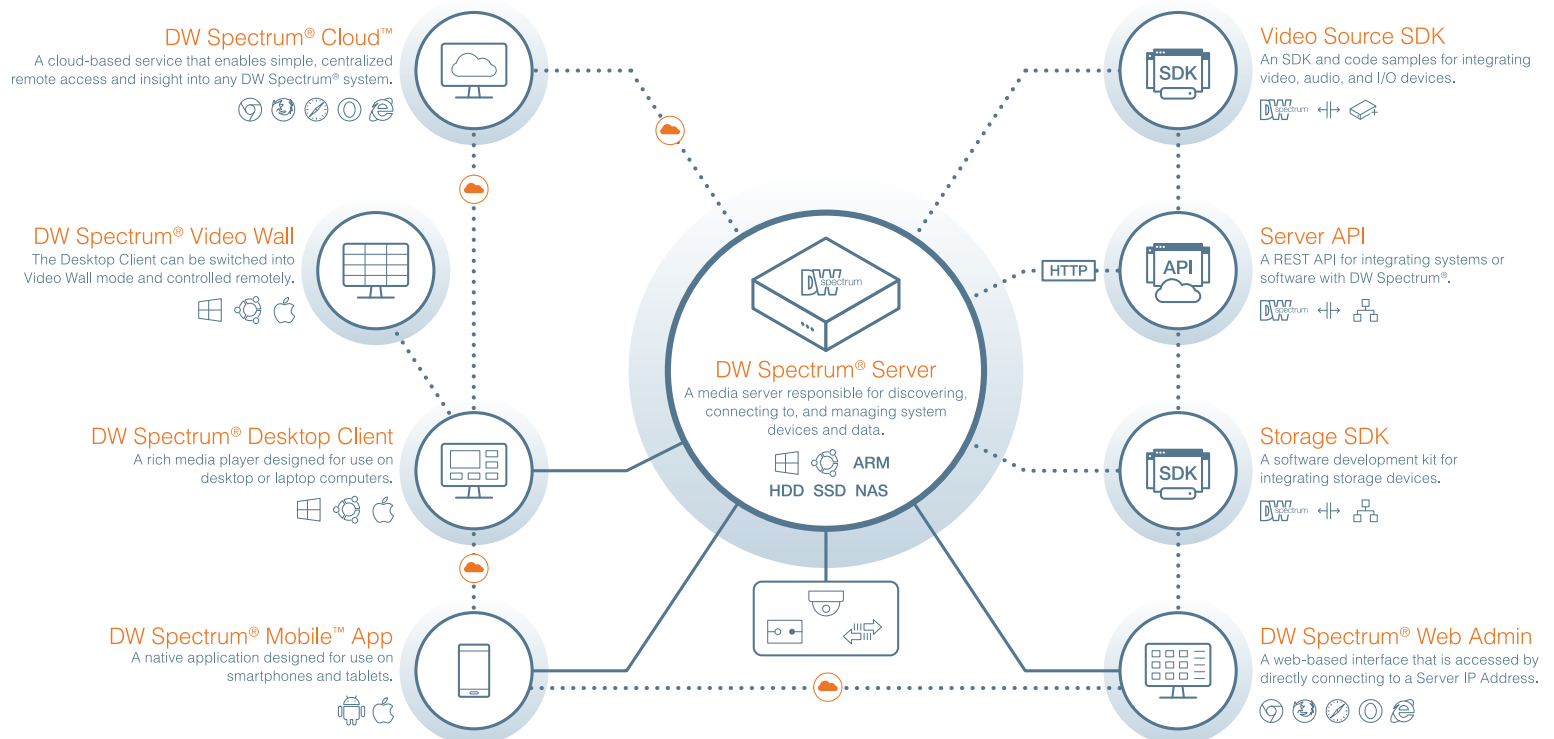


Built  
for  
Users.™



## Open Architecture / Cross Platform

DW Spectrum IPVMS is an endlessly customizable IP Video Management platform that gives users the ability to create tailored networked video solutions for any type of project, or use by anyone, on any device.



# Complete scalable recording solutions



## Interface is dramatically easier to use.

Highly refined GUI delivers seamless transitions, customizable layouts and zoom to create regions of interest or image enhancements.



## Enterprise features are standard.

DW Spectrum IPVMS includes many enterprise level features such as:

- Custom user role management
- Multi-server and centralized management
- Health monitor
- Video storage analytic
- Failover: Protects video recording from data loss
- LDAP / active directory
- Video wall



## End-to-End IP solutions.

DW Spectrum IPVMS is part of DW's complete end-to-end IP solution, with Blackjack servers, MEGApix IP cameras and DW Witness™ app, which converts your smartphone and tablets into a portable, high-quality surveillance camera.



## Lifetime updates included.

While other companies require annual maintenance agreements, DW Spectrum IPVMS system upgrades are always free of charge.



## Scalable from one to thousands of devices.

Highly refined GUI delivers seamless transitions, customizable layouts and zoom to create regions of interest or image enhancements.

# All-in-One NVR and Analytic Server

Built for Users.™

# Blackjack® Ai™

Add the power of advanced neural-network-based analytics to your video streams.



Ai servers are purpose-built NVRs, with built-in server-side analytics that unlock advanced AI capabilities on any connected video stream. This cost-effective, plug-and play appliance combines high-performance recording with video analytics in an easy-to-deploy turnkey solution.

## All in One Device

Achieve lower deployment cost with a single device that performs as an NVR and an Analytics server for all connected video streams.



IVA™ Ai Server



DW Spectrum® IPVMS



Blackjack® Ai™

## Server-Side Analytics for Non-Analytic Cameras

Bring classified object detection to your existing non-analytic cameras.



Deep Learning Object Detection



Logical Rules



Counting Lines



Enter



Detection Zones



Stopped



Intrusion



Tailgating



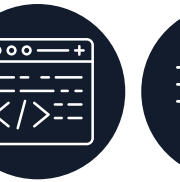
Exit



Direction



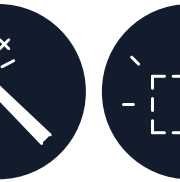
Counting



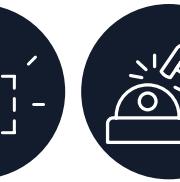
Metadata



Line Crossing



Appear



Disappear



Tamper

# Servers and workstations

## Rackmount servers

## Tower servers

**NDA/A/TAA**  
COMPLIANT PRODUCT



PART NUMBER		Blackjack Ai Rack™ with 32GB memory	Blackjack Ai Rack™ with 64GB memory	Blackjack Ai P-Rack™ 2U w/RAID	Blackjack Ai Tower™ full-size	Blackjack Tower™ mid-size
Included DW Spectrum IP licenses		8 (2x DW-SPECTRUMLSC004)			4 (DW-SPECTRUMLSC004)	
Included IVA Ai Licenses		8 (2x DW-IVAAiSLSC004)			4 (DW-IVAAiSLSC004)	
Form factor		2U Rackmount		2U Rackmount	Full-size Tower	Mid-size Tower
Operating system	Windows 10 64 Bit	DW-BJAIRxxT	DW-BJAI2RxxT	DW-BJAIPxxTR	DW-BJAiTxxTR	DW-BJAiMxxT
	OS on SSD	2 x 240GB NVMe SSD (RAID1)		480GB SSD	480GB SSD	
CPU		Dual Intel® Xeon® Gold processor		Intel® i7 processor	Intel® i7 processor	
Memory		32GB	64GB	32GB	32GB	
Ethernet port		4x 1G Ethernet ports		2x gigabit Ethernet ports (RJ45)	2x 1G Ethernet	
System	Max video storage rate (Mbps)	600Mbps		600 Mbps	600Mbps	480Mbps
Storage	Max # of analytic streams(secondary)	Up to 64		Up to 64	Up to 64	Up to 64
	Maximum hard drives	8x HDD		6 x SATA HDD	6 x 3.5 SATA HDD, Hot-Swappable	3 x 3.5 SATA HDD
	Maximum storage	160TB, RAID5		96TB, RAID5	96TB, RAID5	48TB
	RAID	OS RAID 1, Data RAID5		RAID5	RAID5	N/A
Video-Out	Outputs	True HD, DVI, 4x Mini DisplayPort outputs, Mini Display Port to true HD adapter (included), 3x Mini DisplayPort outputs, 1 display output at a time		1xTrue HD, 3x Display Port, for system configuration. Maximum 1 display output at a time.	1xTrue HD, 3x Display Port, for system configuration. Maximum 1 display output at a time.	
	Video card	NVIDIA RTX A4000		NVIDIA RTX A2000 12GB	NVIDIA RTX A2000 12GB	NVIDIA RTX A2000 12GB
Preloaded VMS software		DW Spectrum IPVMS				
Preloaded Analytic software		DW IVA Ai Server				
Remote clients		Cross Platform - Windows, Linux Ubuntu and Mac				
Mobile apps		iOS and Android				
Keyboard and mouse		Included				
Rail kit		Included			---	
Power supply		2000W dual power supply**		500W**	500W**	500W**
Operating temperature		41°F-104°F (5°C-40°C)		41°F-104°F (5°C-40°C)	41°F-104°F (5°C-40°C)	41°F-104°F (5°C-40°C)
Dimension (WxDxH) (inches)		17.08" x 29.03" x 3.4"		17.29" x 21.93" x 3.5"	8.6" x 19.12" x 16.83"	7.46" x 15.7" x 14.21"
Warranty		5 year warranty with next day on-site repair		5 year limited	5 year limited	5 year limited

\*\*\* An uninterrupted power supply (UPS) is recommended.

Designed and Commissioned in the U.S.A 

# Servers and workstations

## Blackjack<sup>®</sup>

Servers Powered by DW Spectrum<sup>®</sup> IPVMS



Built  
for  
Users.™

NDAA/TAA  
COMPLIANT PRODUCT

## Scalable, enterprise-level servers, powered by DW Spectrum IPVMS.

DW's BlackJack servers powered by DW Spectrum are robust and user-friendly video management solutions, highly optimized to provide unlimited scalability, unmatched bandwidth savings and simplified system setup and management. The architecture is cross-platform supporting Windows, Linux and MAC platforms for complete optimization to match any application.



### DW Spectrum IPVMS preloaded.

DW Spectrum IPVMS is an endlessly customizable IP Video Management platform that gives users the ability to create tailored network video solutions for any type of project, from the office or on in the field.

## Features:



- Supports all ONVIF conformant IP cameras
- Storage options 2-416TB internal storage\*
- Hot swappable drives\*
- Data redundancy\*
- Redundant power supply\*
- Record and manage single- and multi-sensor IP cameras of any resolution up to maximum 600Mbps throughput
- Manage remotely with DW Spectrum Client or the DW Spectrum Mobile app
- Local monitoring outputs ports\*
- Up to dual network ports\*
- Windows 10, Windows server or Linux Ubuntu on separate SSD\*
- Dedicated RAID controller\*
- Hosting DW Spectrum for setup, monitoring and recording
- Up to two (2) 4-channel licenses included for a total of 8 recording channels (DW-SPECTRUMLSCO04)\*
- No annual maintenance fees
- Simple enterprise scalability
- Auto device discovery
- Dual stream recording
- Rail kit included\*
- USB mouse and keyboard included\*
- Designed, assembled and tested in the U.S.A.
- UL listed\*
- NDAA/TAA compliant
- 5 year warranty next business day on-site hardware service, keep your hard drive\*



## Rack™ server

## P-Rack™ servers



PART NUMBER		Blackjack Rack™ 2U - 26 Bay Dual Processor	Blackjack Rack™ 2U - 18 Bay Dual Processor	Blackjack Rack™ 2U - 12 Bay Dual Processor	Blackjack Rack™ 2U - 12 Bay Single Processor	Blackjack P-Rack™ 2U w/RAID	Blackjack P-Rack™ 2U	Blackjack P-Rack™ 1U
Included IP licenses		8				4		
Form factor		Rackmount				Rackmount		
Operating system	Windows 10 IoT	BJRR2YxxT	BJRR2XxxT	DW-BJRR2PxxT	DW-BJRR2UxxT	DW-BJPR2UxxT	DW-BJP2UxxT	DW-BJPIUxxT
	Windows Server	BJRR2YxxTLX	BJRR2XxxTLX	DW-BJRR2PxxTS	DW-BJRR2UxxTS	---	---	---
	Linux Ubuntu LTS	BJRR2YxxTS	BJRR2XxxTS	DW-BJRR2PxxTLX	DW-BJRR2UxxTLX	DW-BJPR2UxxT-LX	DW-BJP2UxxT-LX	DW-BJPIUxxT-LX
	OS on SSD	2 x 240GB NVMe SSD (RAID1)				2.5" SSD Option: DW-SSD80 - second SSD for mirroring the OS*		2.5" SSD
CPU		2x Intel® Xeon® Silver processors			1x Intel® Xeon® Silver processor	Intel® i5® processor Option: DW-CPUi7 - upgrade processor to i7*		Intel®i7® processor
Memory		32GB (4x 8GB)			16GB (2x 8GB)	16GB		
Ethernet port		2x 1GB Base-T Ethernet Ports, 2x 10GB SFP+ Fiber, iDRAC9 Enterprise	6x 1GB Base-T Ethernet Ports, 2x 10G SFP+ Fiber, iDRAC9 Enterprise	2x Gigabit Ethernet portal		2x Gigabit Ethernet portal		
System	Max video storage rate (Mbps)	600 Mbps				600 Mbps	600 Mbps	360 Mbps
Storage	Maximum hard drives	26x SAS HDDs	18x SAS HDDs	12x HDD		6 x HDD	7 x HDD	3 x HDD
	Maximum storage	416TB, RAID5, RAID6 options	288TB, RAID5, RAID6 options	192TB, RAID5, RAID6 options		96TB	112TB	48TB
		OS RAID 1, Options: Data RAID5, RAID6	OS RAID 1, Options: Data RAID5, RAID6	Option: RAID5		RAID5	---	---
Video-Out	Outputs	1 x mini DisplayPort (mini-DP to true HD adapter included)				True HD output or VGA or DVI		
	Video card	NVIDIA T400 2GB		Nvidia Quadra P400		GeForce 210		
	Resolution	---				---		
Preloaded VMS software		DW Spectrum IPVMS				DW Spectrum IPVMS		
Remote clients		Cross Platform - Windows, Linux Ubuntu and Mac				Cross Platform - Windows, Linux Ubuntu and Mac		
Mobile apps		iOS* and Android				iOS and Android		
Keyboard and mouse		Included				Included		
Rail kit		Included				Included		
Power supply		1100W dual power supply**		Dual 750W Redundant**		400W**	400W**	300W**
Operating temperature		41°F-104°F (5°C-40°C)				41°F-104°F (5°C-40°C)		
Dimension (WxDxH) (inches)		17.6" x 31.9" x 3.41"		19" x 28.25" x 3.41"		17.32" x 26" x 3.5"	17.32" x 26" x 3.5"	17.32" x 20.86" x 1.718"
Field repair kit		---				---	---	---
Warranty		5 year warranty, next business day on-site hardware repair				5 year limited		

\* Available during initial order

\*\* An uninterrupted power supply (UPS) is recommended.

# Servers and workstations

**NDA/TAA**  
COMPLIANT PRODUCT

## Full-size Tower™ servers



## Mid-size Tower™ servers



## Mid-size Tower™ workstations



PART NUMBER		Blackjack Tower™ full-size	Blackjack Tower™ full-size w/RAID	Blackjack Tower™ mid-size	Blackjack Tower™ mid-size	Blackjack Tower™ mid-size	Blackjack Tower™ monitoring station	Blackjack Tower™ monitoring station	
Included IP licenses		4						---	
Form factor		Tower full-size		Tower mid-size			Tower mid-size		
Operating system	Windows 10 64 Bit	DW-BJT71xxT	DW-BJTR715xxT/ DW-BJTR716xxT	DW-BJMT31xxT	DW-BJMT51xxT	DW-BJMT71xxT	DW-BJMTC5204T	DW-BJMTC7404T	
	Windows Server	---	DW-BJTR715xxTS/ DW-BJTR716xxTS	---	---	DW-BJMT71xxTS	---		
	Linux Ubuntu	DW-BJT71xxTLX	DW-BJTR715xxTLX/ DW-BJTR716xxTLX	DW-BJMT31xxTLX	DW-BJMT51xxTLX	---	---		
	OS on SSD	Yes		Yes			Yes		
CPU		Intel® i7 processor	Intel® i7 processor	Intel® i3 processor	Intel® i5 processor	Intel® i7 processor	Intel® i5 processor	Intel® i7 processor	
Memory		16GB		Ubuntu: 8GB Windows: 16GB	16GB	16GB	16GB	32GB	
Ethernet port		2x 1G Ethernet		2x 1G Ethernet			1 x 1G Ethernet		
System	Max video storage rate (Mbps)	600Mbps	RAID5: 600Mbps RAID6: 420Mbps	180Mbps	360Mbps	480Mbps	---		
Storage	Maximum hard drives	7 x HDD	7 x HDD	3 x HDD	3 x HDD	3 x HDD	---		
	Maximum storage	112TB	112TB RAID5, RAID6 options	20TB	48TB	48TB	---		
Video-Out	Outputs	1x true HD, 1x DVI, 1x DP outputs for setup and configuration. 1 output at a time.		1x true HD, 1x DVI, 1x VGA outputs for setup and configuration. 1 output at a time.			Four outputs with DP and True HD		
	Video card	on-board Intel Graphics			on-board Intel Graphics			NVIDIA GTX	NVIDIA RTX
	Resolution	---			---			7680x4320	7680x4320
Preloaded VMS software		DW Spectrum IPVMS		DW Spectrum IPVMS			DW Spectrum IPVMS client only		
Remote clients		Cross platform - Windows, Linux Ubuntu and Mac		Cross platform - Windows, Linux Ubuntu and Mac			---		
Mobile apps		iOS and Android		iOS and Android			---		
Keyboard and mouse		Included		Included			Included		
Rail kit		---		---			---		
Power supply		500W**	500W**	400W**	400W**	400W**	300W**	500W**	
Operating temperature		41°F-104°F (5°C-40°C)		41°F-104°F (5°C-40°C)			41°F-104°F (5°C-40°C)		
Dimension (WxDxH) (inches)		8.6" x 19.12" x 16.83"		7.46" x 15.7" x 14.21"			7.46" x 15.7" x 14.21"		
Field repair kit		---		---			---		
Warranty		5 year limited		5 year limited			5 year limited		

## DX™ slim desktop servers

## CX™ PoE-enabled NVR



Blackjack DX™ slim desktop	Blackjack DX™ slim desktop	Blackjack DX™ slim desktop	Blackjack DX™ slim desktop	Blackjack CX™
4				4
Slim desktop				PoE NVR
DW-BJDX71xxT	DW-BJDX51xxT	DW-BJDX31xxT	---	---
---	---	---	---	---
---	DW-BJDX51xxT-LX	DW-BJDX31xxT-LX	DW-BJDX11xxT-LX	DW-BJCxT-LX
m.2 SSD		---		m.2 SSD
Intel® i7 processor	Intel® i5 processor	Intel® i3 processor	Intel® Celeron processor	Intel® Celeron processor
16GB	16GB	Ubuntu: 8GB Windows: 16GB	8GB	8GB
1x 1G Ethernet, 1x 2.5G Ethernet	2x Gigabit Ethernet ports			2x gigabit Ethernet ports (RJ45) 16 PoE/PoE+ ports, 8 virtual channels, max total 24 cameras
480 Mbps	360 Mbps	180 Mbps	80 Mbps	80 Mbps
2 x HDD				2x 3.5" SATA HDD
20TB				40TB
1x true HD, 1x DVI-D for system configuration. Maximum 1 display output at a time.	1x true HD, 1x DVI-D, 1x D-Sub for system configuration. Maximum 1 display output at a time.			1x true HD, 1x DVI-I for system configuration. Maximum 1 display output at a time.
Onboard Intel HD Graphics				---
True HD: 4096x2160@60Hz, DVI-D: 1920x1200@60Hz, D-Sub: 1920x1200@60Hz				4096 x 2160
DW Spectrum IPVMS				DW Spectrum IPVMS
Cross platform - Windows, Linux Ubuntu and Mac				Cross platform - Windows, Linux Ubuntu and Mac
iOS and Android				iOS and Android
Included				Included
---				Wall mount and rack mount ears available. Sold separately
300W**				410W**
41°F-104°F (5°C-40°C)				32°F-104°F (0°C-40°C)
13.1" x 3.8" x 15.6"				16.92" x 11.75" x 13.7"
---				---
5 year limited				5 year limited

\* Available during initial order

\*\* An uninterrupted power supply (UPS) is recommended.



Command . Control . Communicate

## All your systems in one interface.

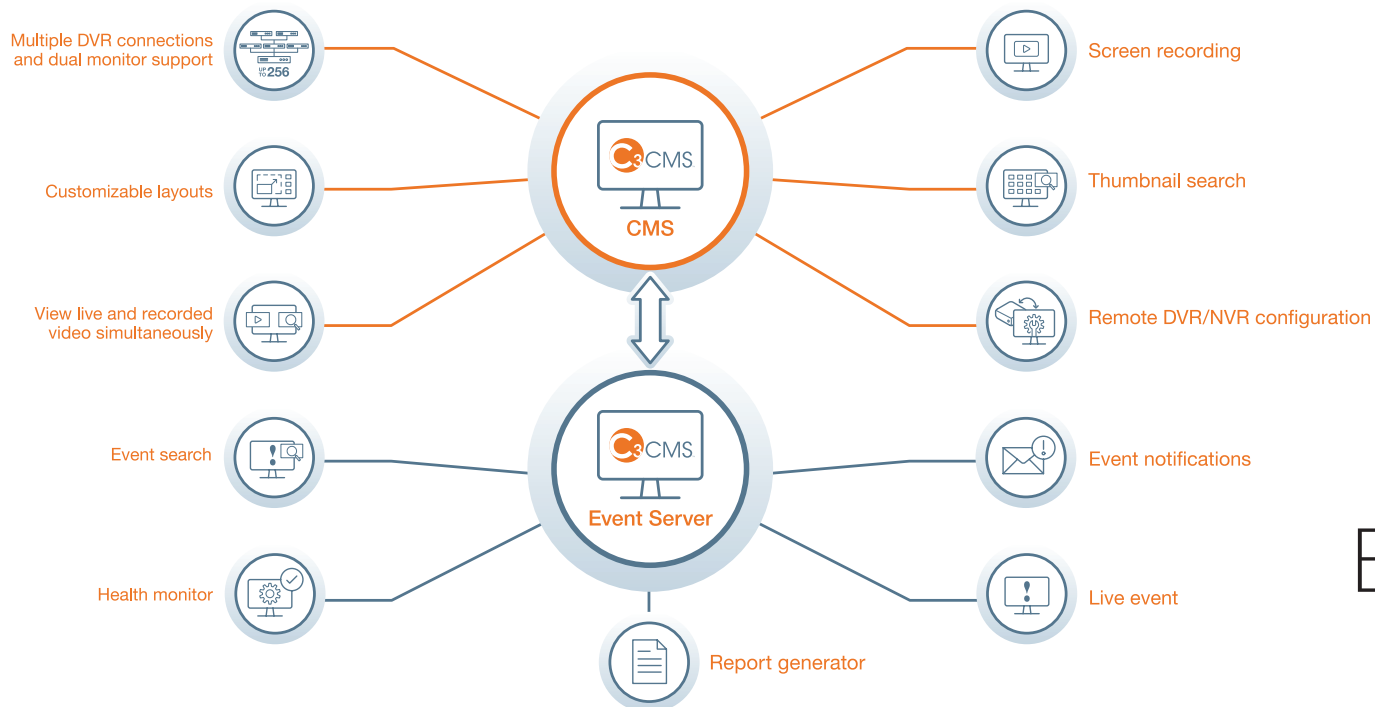
The C3 is a remote management software suite for the VMAX series (VMAX A1 Plus, VMAX A1 G4, VMAX IP Plus and VMAX IP G4) recording solutions and provides a powerful and easy-to-use way to monitor the device from anywhere. The software delivers simultaneous live views and playback of recorded video and supports hundreds of devices simultaneously. C3 CMS provides actionable information in real-time.



Manage and monitor your system from anywhere.

SUPPORTED OPERATING SYSTEM: Windows® MacOS

### All your systems in one interface.



Built  
for  
Users.™

# Remote management and event server software



## Multiple DVR connections and dual monitor support.

Monitor live and recorded data from up to 256 sites simultaneously. Use up to 2 monitors simultaneously for an unparalleled 288 total cameras at the same time.



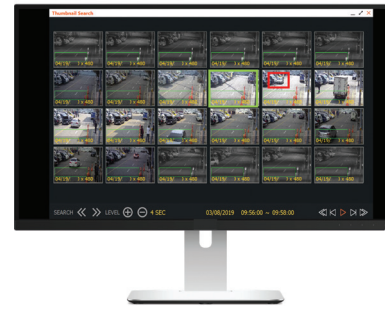
## Customizable layouts.

The C3 CMS supports customizable layouts, from conventional gridline layouts, to user-friendly panoramic, corridor or 2x2 views.



## Screen recording.

C3 CMS allows you to record your own screen.



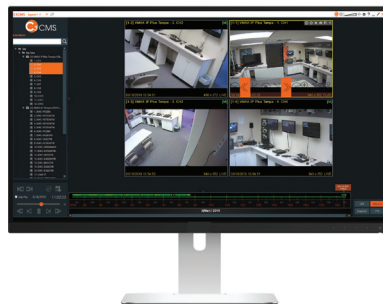
## Thumbnail search.

Find video fast by clicking on thumbnails by the date, hour and minute.



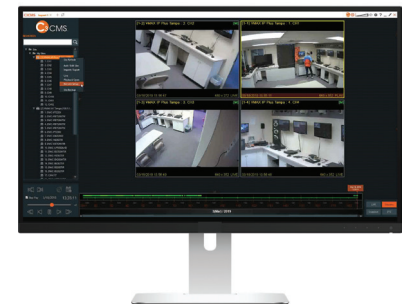
## View simultaneous live and recorded video.

Playback recorded video while watching live view on the same screen at the same time.



## Remote DVR configuration.

Remotely configure DVR settings and firmware upgrades.



# Network video recorders



**NDAA/TAA**  
COMPLIANT PRODUCT

The VMAX IP G4 is an easy to use NDAA-compliant PoE NVR that empowers users with 4K-quality video in a user-friendly stand-alone solution.

The VMAX IP G4 can record up to 4K IP cameras at real-time 30fps. The NVRs are NDAA/TAA compliant, and are available in 4-, 8- and 16-channel models with bonus local PoE management for up to five additional channels.



The app turns the camera on a smartphone or tablet into a surveillance camera that can be viewed and recorded with DW Spectrum IP server or a VMAX IP G4 PoE NVR via 5G and 4G connectivity anytime worldwide.



## Features:



- Complete installation, setup and camera configuration in minutes!
- CCIP™ system encryption protects your surveillance system from out of network attacks
- Record and manage single-sensor IP cameras at real-time 30fps up to 4K (3840×2160)
- Local power for up to 16 IP cameras via resident PoE switch
- PathFinder™ Peer-to-Peer (P2P) remote connection
- Automatic device discovery
- Compatible with ONVIF cameras
- 0-32TB storage options
- Snapshot Notify™: Interval camera image verification sent to an email
- Remote management with C3™ CMS
- Event camera group recording
- System analysis with real-time system, PoE and network status monitoring
- Event and push notifications
- Mobile App for iOS®, Android® and Apple TV®
- RTSP streaming
- Dual-stream recording
- Easy drag and drop camera management
- Instant backup during playback
- Compatible with DW® Spot™ Monitoring module for Public Views
- NVR calculation and auto-recording configuration
- Screen saver to protect monitor screen
- Import/export configuration between multiple NVRs
- Auto or manual firmware upgrade available
- NDAA compliant
- TAA compliant
- 5 year limited warranty

Built  
for  
Users.™

\* See data sheets for specifications per camera.

**NDA/TAA**  
COMPLIANT PRODUCT



PART NUMBER		DW-VG416xT16P	DW-VG412xT8P	DW-VG49xT4P
Operating system		Embedded Linux		
Video compression		H.265, H.264		
System	Channel	16 channels PoE	8 channels PoE + 4 bonus channels	4 channels PoE + 5 bonus channels, 9
	No. of PoE	16-PoE channels, 1Gbps, 802.3at	8-PoE channels, 100Mbps, 802.3at	4-PoE channels, 100Mbps, 802.3at
Display	Speed	Total 480fps	Total 360fps	Total 270fps
	Screen mode	1, 4, 9, 12 and 16	1, 4, 9 and 12	1, 4 and 9
Max. HDD bay and storage		2x SATA HDD, up to 32TB	2x SATA HDD, up to 32TB	1x SATA HDD, up to 16TB
Video input		IP camera max. 4K (3840x2160)	IP camera max. 4K (3840x2160)	IP camera max. 4K (3840x2160)
Video output		True HD output, VGA, up to 3840x2160 (4K) local display output, RTSP streaming		
Recording speed		Up to 480fps up to 4K resolution, max 160Mbps	Up to 360fps up to 4K resolution, max 80Mbps	Up to 270fps up to 4K resolution, max 40Mbps
Recording resolution		Simultaneous dual stream recording		
Audio input/output		1-channel input / 1-channel output		
Alarm input / Relay output		8-channel inputs / 4-channel outputs	4-channel inputs / 1-channel output	4-channel inputs / 1-channel output
PTZ control		RS-485, ONVIF		
LAN		1 x Gbps Ethernet (RJ45)		
Power requirements		54V DC, 3.33A	48V DC, 2.5A	48V DC, 1.25A
Power consumption		180W total power budget (recorder + PoE ports) 150W, 9.37W per PoE port 30W	120W total power budget (recorder + PoE ports) 96W, 12W per PoE port 30W	60W total power budget (recorder + PoE ports) 48W, 12W per PoE port 30W
Operating temperature		32-113 °F (0-45 °C)		
Dimension (WxDxH)		14.96" x 10.55" x 1.77" (380 x 268 x 45 mm)	14.96" x 10.55" x 1.77" (380 x 268 x 45 mm)	11.81" x 9.8" x 1.77" (300 x 249 x 45 mm)
Warranty		5 year limited warranty		

# MEGAPIX<sup>®</sup> Ai<sup>™</sup>



Ai edge engine with Deep Learning (DL) and up to 4K real-time intelligent video solutions.



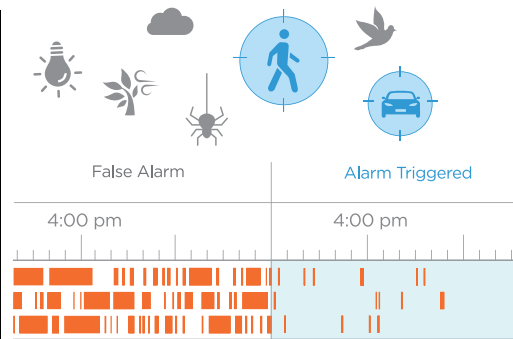
MEGApix Ai cameras place the power of Ai DL at your fingertips, with object detection and tracking. The cameras detect only the objects you want, significantly reducing false alarms, conserving recording storage and enabling a more efficient monitoring solution.

## Optimized performance at the edge

MEGApix Ai's analytics engine is especially designed for the edge, working on the camera side to substantially reduce bandwidth consumption, accelerate response times with overall improved performance.



## Reduce false alarms



Categorizes moving objects and people, distinguishing them from environmental items such as spiders, shaking shadows and moving lights to reduce false alarm rates and save on storage.

## Accurate object classification

The DL Object Tracker allows the automatic classification of people, cyclists, cars, buses and vans, trucks, motorcycles, bicycles and bags.



## ANPR and MMCR technology

Detect and extract numbers and letters in license plates at up to 45mph, with over 95% accuracy. Convert the pixels to usable digital data and identify the vehicle's make, model, color and type.



4K cameras

ANPR camera

**NDA A**  
COMPLIANT PRODUCT



PART NUMBER		DWC-XSDE08Mi	DWC-XSBA08Mi	DWC-XSBE08Mi	DWC-XSDJ08Mi	DWC-XSBA08MiM
Image	Image sensor	4K 1/2.8" Star-Light Plus CMOS sensor				
	Total pixels	3864(H) x 2228(V)				
	Minimum scene illumination	0.09 lux (color)		0.09 lux (color)		0.09 lux (color)
		0 lux (B/W)		0 lux (B/W)		0 lux (B/W)
Audio input/ output		1 line in, 1 line out				1 line in, 1 line out
Lens	Focal length	2.7-13.5mm		2.7-13.5mm	2.7-13.5mm	2.7-13.5mm
	Lens type	Vari-focal p-iris lens with motorized zoom and auto-focus		Vari-focal p-iris lens with motorized-zoom and auto-focus		Vari-focal p-iris lens with motorized zoom and auto-focus
	IR distance	100ft range	140ft range	100ft range	80ft range	140ft range
	Angle of view	33.1°-90.3°	33.1°-90.3°	33.1°-90.3°	33.1°-90.3°	33.1°-90.3°
Operational	Digital noise reduction (DNR)	Smart DNR™ 3D digital noise reduction				
	Wide dynamic range	True WDR				
	Day and night	True D/N				
	Motion detection	Yes				
	Privacy zones	16 privacy masks				
	Deep learning analytics	Deep Learning object tracking				
	Analytics filters	Detection zones and lines, logical rules, tamper, intrusion, counting, counting lines, appear, disappear, stopped, enter, exit, tailgating, dwell, logical rules, direction, metadata				
	Alarm input	1 alarm input	1 alarm input	1 alarm input	1 alarm input	1 alarm input
Alarm output	1 alarm output	1 alarm output	1 alarm output	1 alarm output	1 alarm output	
Network	Video compression type	H.265, H.264, MJPEG				
	Frame rate	30fps at all resolutions				
	Streaming capability	Simultaneous dual-streaming				
	Onboard storage	Micro SD / SDHC / SDXC				
	Video management software	DW Spectrum IPVMS, plus other ONVIF conformant VMS				
Environmental	Housing	Low-profile vandal dome	Bullet	Bullet with junction box	Vandal dome with junction box	Bullet
	Operating temperature	-4°F - 122°F (-20°C - 50°C)	-40°F - 122°F (-40°C - 50°C)	-4°F - 122°F (-20°C - 50°C)		-40°F - 122°F (-40°C - 50°C)
	IP rating	IP67-rated				
	IK rating	IK 10-rated impact-resistant				
	Other certifications	FCC, CE, UL-listed, ROHS, NDA A compliant			FCC, CE, ROHS, NDA A compliant	
Electrical	Power requirements	DC12V, PoE IEEE 802.3af Class3 (Adapter not included)	DC12V, PoE IEEE 802.3at PoE+ Class4 (Adapter not included)	DC12V, PoE IEEE 802.3at PoE+ Class4 (Adapter not included)		DC12V, PoE IEEE 802.3at PoE+ Class4 (Adapter not included)
	Power consumption	DC12V: 10.2W, 850mA PoE: 12.5W	DC12V: 13.2W, 1.1A PoE: 14.8W	DC12V: 13.08W, 1.09A PoE: 14.97W, 0.312mA		DC12V: 13.2W, 1.1A PoE: 14.8W
Mechanical	Dimensions	4.92" x 3.62"	12.2" x 3.81"	7.44" x 5.78"	5.09" x 5.74"	12.2" x 3.81"

# Ai IP cameras

**NDA A**  
COMPLIANT PRODUCT

10MP dual-sensor camera



5MP cameras



Flash LEDs Camera



PART NUMBER		DWC-PDS10Wi28A	DWC-XSDE05Mi	DWC-XSBA05Mi	DWC-XSDA05Bi	DWC-XSTD05MF
Image	Image sensor	2x 5MP 1/2.8" Star-Light Plus CMOS		5MP 1/2.8" Star-Light Plus CMOS sensor		
	Total pixels	2x 2592(H) X 1944(V)		2704(H) X 2104(V)		2592(H) X 1944(V)
	Minimum scene illumination	0.13 lux (color)	0.08 lux (color)	0.09 lux (color)	0.13 lux (color)	0.08 lux (color)
0 lux (B/W)		0 lux (B/W)	0 lux (B/W)	0 lux (B/W)	0 lux (B/W)	
Audio input/ output		1 microphone built-in/1 output		1 line in, 1 line out		
Lens	Focal length	2x 2.8mm, F1.8	2.7-13.5mm		2.8mm	2.7-13.5mm
	Lens type	Fixed lens	Vari-focal p-iris lens with motorized zoom and auto-focus		Fixed lens	Vari-focal p-iris lens with motorized zoom and auto-focus
	IR distance	50ft range	100ft range	140ft range	80ft range	75ft range
	Angle of view	102.4°	31.6°-98.3°	31°-96°	102.4°	31.6°-98.3°
Operational	Digital noise reduction (DNR)	Smart DNR™ 3D digital noise reduction				
	Wide dynamic range	True WDR				
	Day and night	True D/N				
	Motion detection	Yes				
	Privacy zones	16 privacy masks				
	Deep learning analytics	Deep Learning object tracking				
	Analytics filters	Detection zones and lines, logical rules, tamper, intrusion, counting, counting lines, appear, disappear, stopped, enter, exit, tailgating, dwell, logical rules, direction, metadata				
	Alarm input	1 alarm input	1 alarm input	1 alarm input	1 alarm input	1 alarm input
Alarm output	1 alarm output	1 alarm output	1 alarm output	1 alarm output	1 alarm output	
Network	Video compression type	H.265, H.264, MJPEG				
	Frame rate	30fps at all resolutions				
	Streaming capability	Simultaneous dual-streaming				
	Onboard storage	Micro SD / SDHC / SDXC				
	Video management software	DW Spectrum IPVMS, plus other ONVIF conformant VMS				
Environmental	Housing	Dual-sensor vandal dome	Low-profile vandal dome	Bullet	Ultra low-profile vandal dome	Galaxy™ vandal ball turret
	Operating temperature	-4°F - 122°F (-20°C - 50°C)		-40°F - 122°F (-40°C - 50°C)	-4°F - 122°F (-20°C - 50°C)	
	IP rating	IP67-rated				
	IK rating	IK 10-rated impact-resistant				
Electrical	Other certifications	FCC, CE, ROHS, UL-listed NDA A compliant		FCC, CE, ROHS, NDA A compliant		
	Power requirements	DC12V, PoE IEEE 802.3af Class3 (Adapter not included)	DC12V, PoE IEEE 802.3af Class3 (Adapter not included)	DC12V, PoE IEEE 802.3at PoE+ Class4 (Adapter not included)	DC12V, PoE IEEE 802.3af Class3 (Adapter not included)	DC12V, PoE IEEE 802.3af Class3 (Adapter not included)
Mechanical	Power consumption	DC12V: max 8.5W 708mA PoE: max 10.6W	DC12V: 10.4W, 866mA PoE: 12.5W	DC12V: 13.2W, 1.1A PoE: 14.4W	DC12V: 7.1W, 591mA PoE: 9.6W	DC12V, PoE IEEE 802.3af Class3 (Adapter not included)
	Dimensions	5.47" x 3.12"	4.92" x 3.62"	12.2" x 3.81"	4.13" x 2.4"	4.92" x 4.79"

# IP cameras



21MP



**NDA A**  
COMPLIANT PRODUCT



## Single- and multi-sensor 180° views at up to real-time 30fps and up to 21MP.

DW MEGApix PANO single- and multi-sensor IP cameras allow you to experience true panoramic views with the convenience of flexible sensor configuration at fast frame rates. When comparing overall system cost, these may be the most cost-effective cameras you can buy because they do more from a single installation, reducing all related costs, such as cabling and labor.

**21MP** Forensic-level details at real-time 30fps.

Get wide views and forensic details from one camera. MEGApix Pano single- and multi-sensor cameras produce 180° views via a single PoE Plus connection.



Zoom into forensic-level detail

### Features:

- 4x 1/1.8" image sensor at real-time 30fps, 21MP 180° panoramic view IP camera
- Star-Light Plus™ color in near-total darkness technology
- 4x 8.0mm fixed lens
- Fast frame rates: real-time 30fps at 21MP
- Zero distortion anti-reflective glass
- PoE injector included
- Smart DNR™ 3D digital noise reduction
- True day/night with mechanical IR cut filter
- Auto gain control (AGC)

- Auto white balance (AWB)
- Motion detection
- Two-way audio
- Alarm sensor input and relay output
- 4x Micro SD/SDHC/SDXC card slot (not included)
- Web server built-in
- NDA A compliant
- UL-listed
- IP66-rated housing
- 5 year warranty



PART NUMBER		DWC-PZ21M69TW
Image	Image sensor	4x 5.2MP 1/1.8" CMOS
	Total pixels	3096(H) X 2080(V)
	Minimum scene illumination	0.16 lux (color) ---
Audio input/ output		1 line in, 1 line out
Lens	Focal length	4x 8.0mm lenses
	Lens type	Fixed lenses
	IR distance	---
	Angle of view	180° panoramic view
Operational	Digital noise reduction (DNR)	Smart DNR™ 3D digital noise reduction
	Wide dynamic range	---
	Day and night	True D/N
	Motion detection	Yes
	Alarm input	1 alarm input
Alarm output		1 alarm output
Network	Video compression type	H.264, MJPEG
	Frame rate	Up to 30fps at all resolutions
	Streaming capability	Simultaneous dual-streaming
	On board storage	4x Micro SD/SDHC/SDXC
Video management software		DW Spectrum® IPVMS, plus other ONVIF conformant VMS
Environmental	Housing	Outdoor housing
	Operating temperature	-4°F - 122°F (-20°C - 50°C)
	IP rating	IP66-rated
	IK rating	---
	Other certifications	FCC, CE, ROHS, UL-listed, NDA A compliant, TAA compliant
Electrical	Power requirements	DC12V, PoE IEEE 802.3at PoE+ class 4 (PoE injector included)
	Power consumption	DC12V: 21.5W PoE IEEE802.3at class4: 23.2W
Mechanical	Dimensions	7.55" x 4.25"

Built for Users.™  
ONVIF

# IP cameras

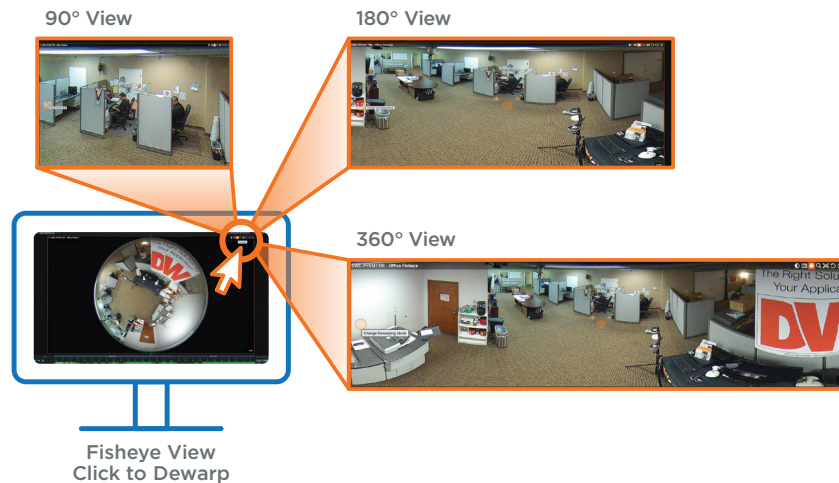


## 360° fisheye views at real-time 30fps.

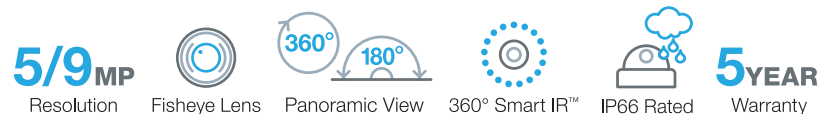
MEGApix Pano 360° view fisheye IP cameras with IR monitor an entire room with a single camera, providing the ultimate ROI with edge-to-edge image clarity.



MEGApix Pano 360° view fisheye cameras with IR monitor an entire room with a single camera, providing the ultimate ROI.



## Features:



- 9MP and 5MP models at real-time resolution
- 2.1mm and 1.55mm fisheye lens options
- Support 360° hemispheric fisheye view and 360°, 180° and 90° panoramic views
- Edge-to-edge image clarity
- Multi codecs with simultaneous dual-stream
- 360° Smart IR™ with intelligent camera sync
- Two-way audio via DW Spectrum IPVMS\*

- Smart DNR™ 3D digital noise reduction
- True day/night with mechanical IR cut filter
- Auto gain control (AGC)
- Alarm sensor input\*
- Relay output\*
- NDAA compliant
- IP66-rated
- 5 year warranty



PART NUMBER		DWC-P(P)VF9Di2TW	DWC-P(P)VF5Di1TW
Image	Image sensor	12.4MP 1/1.7" CMOS	5MP 1/1.8" CMOS
	Total pixels	4000(H) X 3000(V)	3096(H) X 2080(V)
	Minimum scene illumination	0.3 lux (color)	0.39 lux (color)
		0 lux (B/W)	
Audio input/ output		1 line in, 1 line out	
Lens	Focal length	2.1mm	1.55mm
	Lens type	Fisheye lens	
	IR distance	80ft range	
	Angle of view	360°	
Operational	Digital noise reduction (DNR)	Smart DNR™ 3D digital noise reduction	
	Wide dynamic range	D-WDR	
	Day and night	True D/N	
	Motion detection	Yes	
	Alarm input	1 alarm input	
	Alarm output	1 alarm output	
Network	Video compression type	H.265 or H.264 or MJPEG	
	Frame rate	Up to 30fps at all resolutions	
	Streaming capability	Simultaneous dual-streaming	
	Onboard storage	Micro SD/SDHC/SDXC	
	Video management software	DW Spectrum IPVMS, plus other ONVIF conformant VMS	
Environmental	Housing	Fisheye vandal dome	
	Operating temperature	-4°F - 122°F (-20°C - 50°C)	
	IP rating	IP66-rated	
	IK rating	IK09-rated	
Electrical	Other certifications	FCC, CE, ROHS, UL-listed, NDAA compliant	
	Power requirements	12V DC, PoE IEEE 802.3af, Class 3	
	Power consumption	DC12V Max 8.5W	DC12V: max 7.5W
Mechanical		PoE Max 10W	PoE: max 8.7W
	Dimensions	4.9" x 1.88"	

\* See data sheets for specifications per camera.

## MEGAPIX FLEX™ 20MP 16MP

Configurable Multi-Sensor IP Cameras

360°, 270° and 180° configurable views at real-time 30fps.

MEGApix Flex 16MP multi-sensor configurable IP cameras reduce total system cost by providing four 4MP CMOS sensors in one housing and installation and up to 20MP total resolution. The Flex cameras come with user-configurable fixed or vari-focal lens modules and produces four video streams at real-time 30fps. Zoom-in for forensic-quality details with DW Spectrum IPVMS.

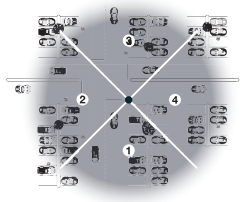


**4in1**  
One Installation

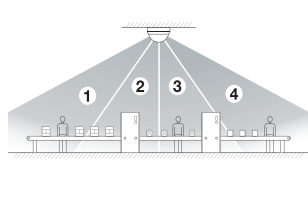
**NDAA**  
COMPLIANT PRODUCT



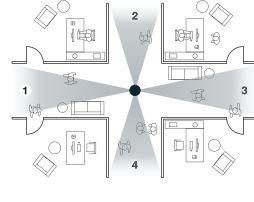
### FLEX™ Four Cameras in One Installation!



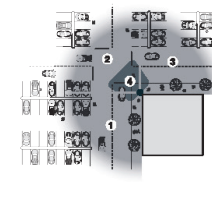
360° Parking Lot Installation



180° Assembly Line Installation



360° Hallway Installation  
Sensor's max tilt: 70°



270° Corner Installation

### Features:

**UP TO 20MP**  
Resolution at 30fps

**4x** Vari-Focal or Fixed Lens Modules

**4-in-1** Install

Flexible Sensor Install

IP-Rated Housing

**5 YEAR** Warranty

- 20MP (4x 5MP) and 16MP (4x 4MP) 1/3" image sensors at real-time 30fps\*
- Star-Light Plus™ color in near-total darkness technology\*
- 360° and 180° flexible panoramic view IP camera
- 4x 2.8-8.0mm vari-focal lens modules with motorized zoom and auto-focus\*
- Available as a complete system with 4x 2.8mm, 4x 4.0mm, 4x 6.0mm or 4 x 8.0mm lens modules or camera and other lens options sold separately.\*
- Four cameras in one installation
- 3-axis gimbal for wide range lens positioning
- Flexible sensor positioning on a magnetic base
- True wide dynamic range (WDR)
- PoE injector included
- Two-way audio

- Multi codecs (H.265, H.264, MJPEG) with simultaneous streaming\*
- Smart DNR™ 3D digital noise reduction
- True day/night with mechanical IR cut filter
- Auto gain control (AGC)
- Auto white balance (AWB)
- Motion detection
- 4x micro SD/SDHC/SDXC class 10 card (card not included)
- Alarm sensor input and relay output
- ONVIF conformant, profile S
- NDAA compliant
- UL-listed
- IP66 and IP67-rated housing options\*
- IK10 impact-resistant housing\*
- 5 year warranty



PART NUMBER		DWC-PVX16WV DWC-PVX16W2W* DWC-PVX16W4W*	DWC-P(P)VX20WATW
Image	Image sensor	4x 4MP 1/3" CMOS	4x 1/2.8" 5.14MP Star-Light Plus™ CMOS
	Total pixels	4x 2688(H) x 1520(V)	4x 2592(H) x 1944(V)
	Minimum scene illumination	0.41 lux (color)	0.05 lux (color) 0.1 lux (B/W)
Audio input/ output		1 line in, 1 line out	
Lens	Focal length	2.8mm, 4.0mm, 6.0mm and 8.0mm options	4x 2.8 - 8.0mm
	Lens type	Fixed lens	Vari-focal lens with motorized zoom and auto-focus
	IR distance	---	
	Angle of view	90° (2.8mm), 51° (6.0mm), 81° (4.0mm), 39° (8.0mm)	4x 51° - 93°
Operational	Digital noise reduction (DNR)	Smart DNR™ 3D digital noise reduction	
	Wide dynamic range	True WDR	
	Day and night	True D/N	
	Motion detection	Yes	
	Alarm input	1 alarm input	
	Alarm output	1 alarm output	
Network	Video compression type	H.264, MJPEG	H.265, H.264, MJPEG
	Frame rate	Up to 30fps at all resolutions	
	Streaming capability	Simultaneous multi-streaming	
	Onboard storage	4x Micro SD/SDHC/SDXC cards	
Environmental	Video management software	DW Spectrum IPVMS	
	Housing	Outdoor vandal dome	
	Operating temperature	-4°F - 122°F (-20°C - 50°C)	
	IP rating	IP66-rated	IP67-rated
	IK rating	---	IK 10-rated impact-resistant
Electrical	Other certifications	FCC, CE, ROHS, UL-listed, NDAA compliant	
	Power requirements	DC12V PoE+ IEEE 802.3at Class 4 (PoE Injector included)	DC12V, PoE IEEE 802.3bt PoE+ class 5 (High power PoE injector included)
	Power consumption	18W	DC12V: max 28W PoE: max 31W
Mechanical	Dimensions	7.48" x 3.54"	8.26" x 3.61"

\* DWC-PVX16W2W includes 4x 2.8mm fixed lens modules installed.  
\* DWC-PVX16W4W includes 4x 4.0mm fixed lens modules installed.

# IP Cameras



5MP 4MP 3MP 2.1MP



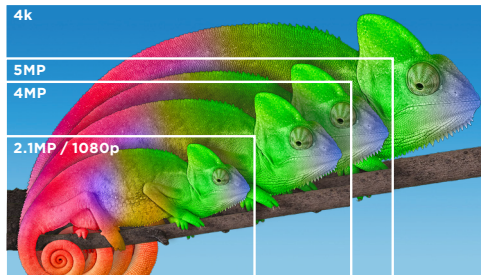
MEGApix IP cameras provide crystal-clear images at 30fps.

MEGApix cameras feature state-of-the-art user-friendly technology, providing superb digital zooming without detail loss or pixilation.



Megapixel resolution.

DW's technology delivers crystal-clear images in resolutions up to 4K over coaxial infrastructure. Higher resolution delivers forensic details when zooming into the camera's field of view.



Star-Light Plus™ color in darkness technology.

Star-Light Plus color in near-total darkness technology provides crisp, clear color images in near darkness. The camera's sensor offers back-illuminated pixel technology for increased light sensitivity. The result is a high-quality color picture in the visible light and near infrared light.



Star-Light Plus™ monochrome images in near-total darkness.



Star-Light Plus™ delivers color image details in near-total darkness.

## Features:



- 4K, 5MP, 4MP, 3MP and 2.1MP/1080p image sensors at real-time 30fps
- Star-Light Plus color in darkness technology\*
- Intelligent Video Analytics (IVA) detecting and classifying people and objects in real-time.
- Vari-focal and fixed lens options
- True Wide Dynamic Range (WDR)\*
- Multiple codecs (H.265, H.264, MJPEG) with simultaneous streaming\*
- Cold Start -40°F (-40°C)\*
- 50-150' Smart IR™ with intelligent camera sync\*
- Smart DNR™ 3D digital noise reduction

- CleanView™ hydrophobic dome coating repels water, dust and grease\*
- Audio input through built-in microphone\*
- True day/night mechanical IR cut filter\*
- Programmable privacy zones
- Auto gain control (AGC)
- Backlight compensation (BLC)\*
- Auto white balance (AWB)
- Motion detection
- Micro SD/SDHC/SDXC card (not included)\*
- Alarm sensor input and relay output\*

- Web server built-in
- PoE class 2 and class 3 and DC12V
- Waterproof cabling
- ONVIF conformant, profile S
- UL listed\*
- NDAA compliant\*
- TAA compliant\*
- IP-rated housing\*
- IK 10-rated impact-resistant
- 5 year warranty



\* See data sheets for specifications per camera.

### 4K cameras

### 5MP cameras

**NDA A**  
COMPLIANT PRODUCT



PART NUMBER		DWC-M(P)VC8WiATW	DWC-M(P)VC8Wi28TW	DWC-M(P)B48WiATW	DWC-M(P)VD8WiATW	DWC-M(P)VD8Wi28TW	DWC-M(P)VA5WiAT	DWC-M(P)VA5Wi28T	
Image	Image sensor	4K 1/2.8" Star-Light Plus™ CMOS					5MP 1/2.8" Star-Light Plus™ CMOS		
	Total pixels	3864(H) x 2228(V)	3952 (H) x 2320 (V)	3952 (H) x 2320 (V)	3864(H) x 2228(V)	3952 (H) x 2320 (V)	2592(H) X 1944(V)		
	Minimum scene illumination	0.043 lux (color)	0.18 lux (color)	0.09 lux (color)	0.09 lux (color)	0.12 lux (color)	0.08 lux (color)	0.13 lux (color)	
0 lux (B/W)		0 lux (B/W)	0 lux (B/W)	0 lux (B/W)	0 lux (B/W)	0.0 lux (B/W)	0.0 lux (B/W)		
Audio input/output		1 line in, 1 line out	1 line in, 1 line out	1 line in, 1 line out	1 line in, 1 line out	1 line in, 1 line out	---	---	
Lens	Focal length	2.7-13.5mm	2.8mm	2.7-13.5mm	2.7-13.5mm	2.8mm	2.7-13.5mm	2.8mm	
	Lens type	Vari-focal p-iris lens with motorized zoom and auto-focus	Fixed lens	Vari-focal p-iris lens with motorized zoom and auto-focus	Vari-focal p-iris lens with motorized zoom and auto-focus	Fixed lens	Vari-focal p-iris lens with motorized-zoom and auto-focus	Fixed lens	
	IR distance	100ft range	100ft range	140ft range	100ft range	100ft range	100ft range	100ft range	
	Angle of view	33.1°-90.3°	105.5°	33.1°-90.3°	33.1°-90.3°	105.5°	31° - 85°	103°	
Operational	Digital noise reduction (DNR)	Smart DNR™ 3D digital noise reduction					Smart DNR™ 3D digital noise reduction		
	Wide dynamic range	True WDR					True WDR		
	Day and night	True D/N					True D/N		
	Motion detection	Yes					Yes		
	Privacy zones	16 privacy masks					16 privacy masks		
	Intelligent Video Analytics	IVA license: intrusion, line crossing, counting line, loitering, enter, exit, tamper					IVA license: intrusion, line crossing, counting line, loitering, enter, exit, tamper		
		IVA+ license: object removed, tailgating, direction, stopped, appear, disappear, object left					IVA+ license: object removed, tailgating, direction, stopped, appear, disappear, object left		
Alarm input	1 alarm input	1 alarm input	1 alarm input	1 alarm input	1 alarm input	---	---		
Alarm output	1 alarm output	1 alarm output	1 alarm output	1 alarm output	1 alarm output	---	---		
Network	Video compression type	H.265, H.264, MJPEG					H.265, H.264, MJPEG		
	Frame rate	30fps at all resolutions					Up to 30fps at all resolutions		
	Streaming capability	Simultaneous dual-streaming					Simultaneous dual-streaming		
	Onboard storage	Micro SD / SDHC / SDXC					---	---	
	Video management software	DW Spectrum IPVMS, plus other ONVIF conformant VMS					DW Spectrum IPVMS, plus other ONVIF conformant VMS		
Environmental	Housing	Low-profile vandal dome	Low-profile vandal dome	Bullet	Galaxy™ vandal ball turret	Galaxy™ vandal ball turret	Vandal ball turret	Vandal ball turret	
	Operating temperature	-4°F - 122°F (-20°C - 50°C)			-40°F - 122°F (-40°C - 50°C)	-4°F - 122°F (-20°C - 50°C)		-4°F - 122°F (-20°C - 50°C)	
	IP rating	IP67-rated	IP67-rated	IP67-rated	IP66-rated	IP66-rated	IP67-rated		
	IK rating	IK 10-rated impact-resistant			IK 9-rated impact-resistant			IK 10-rated impact-resistant	
	Other certifications	FCC, CE, ROHS, UL-listed, NDA A compliant					FCC, CE, ROHS, UL-listed, NDA A compliant		
Electrical	Power requirements	DC12V, PoE IEEE 802.3af Class 3		DC12V, IEEE 802.3at PoE+ class 4	DC12V, PoE IEEE 802.3af Class 3		12V DC, PoE IEEE 802.3af, Class 3		
	Power consumption	DC12V: 9.3W PoE: 11.6W	DC12V: 8W PoE: 9.6W	DC12V: 10.2W PoE: 16W	DC12V: 12.4W PoE: 14.9W	DC12V: 9.8W PoE: 13.9W	DC12V: max 7.1W PoE: max 8.5W	DC12V: max 6.5W PoE: max 7.8W	
Mechanical	Dimensions	4.92" x 3.62"	4.92" x 3.62"	12.2" x 3.81"	4.92" x 4.09"	4.92" x 4.09"	4.92" x 4.8"	4.92" x 4.8"	

# IVA IP cameras

**NDA A**  
COMPLIANT PRODUCT



PART NUMBER		DW-M(P)HS5W37T	DWC-M(P)V85WiATW	DWC-M(P)F5Wi4TW DWC-M(P)F5Wi6TW DWC-M(P)F5Wi8TW	DWC-M(P)V75Wi28TW DWC-M(P)V75Wi4TW DWC-M(P)V75Wi6TW	DWC-M(P)V45WiATW	DWC-M(P)B45Wi650TW	DWC-M(P)B45WiATW
Image	Image sensor	5MP 1/2.8" Star-Light Plus™ CMOS	5MP 1/2.8" Star-Light Plus™ CMOS					
	Total pixels	2592(H) X 1944(V)	2592(H) X 1944(V)					
	Minimum scene illumination	0.26 lux (color)	0.08 lux (color) 0.0 lux (B/W)	0.16 lux (color) 0.0 lux (B/W)	Color: 0.13 lux (DWC-M(P)V75Wi28TW) 0.16 lux (DWC-M(P)V75Wi4TW/6TW) 0.0 lux (B/W)	0.08 lux (color) 0.0 lux (B/W)	0.08 lux (color) 0.0 lux (B/W)	0.08 lux (color) 0.0 lux (B/W)
Audio input/ output		---	1 line in, 1 line out	1 line in, 1 line out	---	1 line in, 1 line out	1 line in, 1 line out	1 line in, 1 line out
Lens	Focal length	3.7mm, F2.5	2.7 - 13.5mm	4.0mm (DWC-M(P)F5Wi4TW) 6.0mm (DWC-M(P)F5Wi6TW) 8.0mm (DWC-M(P)F5Wi8TW)	2.8mm (DWC-M(P)V75Wi28TW) 4.0mm (DWC-M(P)V75Wi4TW) 6.0mm (DWC-M(P)V75Wi6TW)	2.7 - 13.5mm	6-50mm	2.7 - 13.5mm
	Lens type	Fixed lens	Vari-focal p-iris lens with motorized-zoom and auto-focus	Fixed lens	Fixed lens	Vari-focal p-iris lens with motorized-zoom and auto-focus		
	IR distance	---	100ft range	50ft range	80ft range	100ft range	140ft range	140ft range
	Angle of view	87.6°	31° - 96°	82.3° (DWC-M(P)F5Wi4TW) 51.9° (DWC-M(P)F5Wi6TW) 37.8° (DWC-M(P)F5Wi8TW)	102.4° (DWC-M(P)V75Wi28TW) 82.3° (DWC-M(P)V75Wi4TW) 51.9° (DWC-M(P)V75Wi6TW)	31° - 96°	6.9° - 40.8°	31° - 85°
Operational	Digital noise reduction (DNR)	Smart DNR™ 3D digital noise reduction						
	Wide dynamic range	True WDR						
	Day and night	True D/N						
	Motion detection	Yes						
	Privacy zones	16 privacy masks						
	Intelligent Video Analytics	IVA license: intrusion, line crossing, counting line, loitering, enter, exit, tamper IVA+ license: object removed, tailgating, direction, stopped, appear, disappear, object left						
	Alarm input	---	1 alarm input	1 alarm input	---	1 alarm input	1 alarm input	1 alarm input
Alarm output	---	1 alarm output	1 alarm output	---	1 alarm output	1 alarm output	1 alarm output	
Network	Video compression type	H.265, H.264, MJPEG	H.265, H.264, MJPEG					
	Frame rate	Up to 30fps at all resolutions	Up to 30fps at all resolutions					
	Streaming capability	Simultaneous dual-streaming	Simultaneous dual-streaming					
	Onboard storage	---	Micro SD / SDHC / SDXC					
Video management software	DW Spectrum IPVMS, plus other ONVIF conformant VMS	DW Spectrum IPVMS, plus other ONVIF conformant VMS						
Environmental	Housing	Height Strip	Low-profile vandal dome	Ultra low-profile vandal dome	Ultra low-profile vandal dome	SnapIt™ vandal dome	Bullet	Bullet
	Operating temperature	-4°F - 122°F (-20°C - 50°C)	-4°F - 122°F (-20°C - 50°C)				-40°F - 122°F (-40°C - 50°C)	
	IP rating	---	IP66-rated		IP67-rated	IP68-rated	IP66-rated	
	IK rating	---	IK 10-rated impact-resistant				IK 9-rated impact-resistant	
Other certifications	FCC, CE, ROHS, UL listed, NDA A compliant	FCC, CE, ROHS, UL-listed, NDA A compliant						
Electrical	Power requirements	12V DC, PoE IEEE 802.3af, Class 2	12V DC, PoE IEEE 802.3af, Class 3					
	Power consumption	DC12V Max 4W, 33.3mA, PoE Max 4.8W, 100mA	DC12V: max 7.4W PoE: max 8.7W	DC12V: max 5.9W PoE: max 7.2W	DC12V: max 6W PoE: max 7.2W	DC12V: max 8.3W PoE: max 10.5W	DC12V: max 9W PoE: max 10.5W	DC12V: max 9W PoE: max 10.5W
Mechanical	Dimensions	1.85" x 1.45" x 33.85"	4.9" x 3.6"	4.9" x 2.9"	4.13" x 2.4"	5.47" x 4.93"	9.73" x 3.8"	9.73" x 3.8"



5MP camera

2.1MP/1080p cameras

Pinhole camera



DWC-M(P)B75Wi4TW	DWC-M(P)VA2WiAT	DWC-M(P)VA2Wi28T	DWC-M(P)V82WiATW	DWC-M(P)F2Wi28TW DWC-M(P)F2Wi4TW	DWC-M(P)V72Wi28ATW DWC-M(P)V72Wi4ATW	DWC-M(P)V72Wi28TW DWC-M(P)V72Wi4TW DWC-M(P)V72Wi6TW	DWC-M(P)B72Wi4TW	DWC-M(P)PH2W28TW	
5MP 1/2.8" Star-Light Plus™ CMOS			2.1MP/1080p 1/2.8" Star-Light Plus™ CMOS					2.1MP/1080p 1/2.8" Star-Light Plus™ CMOS	
2560 (H) x 1440 (V)	1945(H) X 1109(V)	1945(H) X 1109(V)	1945(H) X 1109(V)	1945(H) x 1109(V)	1945(H) x 1109(V)	1945(H) x 1109(V)	1945 (H) x 1109 (V)	1945(H) X 1109(V)	
0.16 lux (color) 0.0 lux (B/W)	0.043 lux (color) 0.0 lux (B/W)	0.05 lux (color) 0.0 lux (B/W)	0.02 lux (color) 0.0 lux (B/W)	0.25 lux (color) 0.0 lux (B/W)	0.05 lux (color) (DWC-M(P)V72Wi28ATW) 0.09 lux (color) (DWC-M(P)V72Wi28ATW) 0.0 lux (B/W)	0.09 lux (color) (DWC-M(P)V72Wi4TW, DWC-M(P)V72Wi6TW) 0.05 lux (color) (DWC-M(P)V72Wi28TW) 0.0 lux (B/W)	0.09 lux (color) 0.0 lux (B/W)	0.065 lux (color)	
---	---	---	1 line in, 1 line out	1 line in, 1 line out	Built-in microphone	---	---	---	
4.0mm	2.7 - 13.5mm	2.8mm	2.8 - 12mm	2.8mm	2.8mm (DWC-M(P)V72Wi28ATW) 4.0mm (DWC-M(P)V72Wi4ATW)	2.8mm (DWC-M(P)V72Wi28TW) 4.0mm (DWC-M(P)V72Wi4TW) 6.0mm (DWC-M(P)V72Wi6TW)	4.0mm	2.8mm	
Fixed lens	Vari-focal p-iris lens with motorized-zoom and auto-focus	Fixed lens	Vari-focal p-iris lens with motorized-zoom and auto-focus	Fixed lens				Fixed lens	
100ft range	100ft range	100ft range	100ft range	50ft range	80ft range	80ft range	100ft range	---	
82.3°	34.1° - 93.6°	110°	35° - 96°	115°	115° (DWC-M(P)V72Wi28ATW) 86° (DWC-M(P)V72Wi4ATW)	115° (DWC-M(P)V72Wi28TW) 86° (DWC-M(P)V72Wi4TW) 55° (DWC-M(P)V72Wi6TW)	86°	106.6°	
Smart DNR™ 3D digital noise reduction									
True WDR									
True D/N									
Yes									
16 privacy masks									
IVA license: intrusion, line crossing, counting line, loitering, enter, exit, tamper									
IVA+ license: object removed, tailgating, direction, stopped, appear, disappear, object left									
---	---	---	1 alarm input	1 alarm input	---	---	---	1 alarm input	
---	---	---	1 alarm output	1 alarm output	---	---	---	1 alarm output	
H.265, H.264, MJPEG									
Up to 30fps at all resolutions									
Simultaneous dual-streaming									
Micro SD / SDHC / SDXC	---	---	Micro SD / SDHC / SDXC				Micro SD		
DW Spectrum IPVMS, plus other ONVIF conformant VMS									
Bullet	Vandal ball turret	Vandal ball turret	Low-profile vandal dome	Ultra low-profile vandal dome			Bullet	Pinhole camera	
-4°F - 122°F (-20°C - 50°C)									
IP67-rated			IP66-rated			IP67-rated			
---	IK 10-rated impact-resistant						---	---	
FCC, CE, RoHS, UL-listed, NDA compliant									
DC12V, PoE IEEE 802.3af class 3				PoE IEEE 802.3af class 2				DC 12V, PoE IEEE 802.3af Class 3	
DC12V: max 6.5W PoE: max 8.3W	DC12V: max 6.4W PoE: max 7.6W	DC12V: max 5.7W PoE: max 7.2W	DC12V: max 6.5W PoE: max 8.5W	DC12V: max 4W PoE: max 5.5W	DC12V: max 3.7W PoE: max 5.5W	DC12V: max 3.7W PoE: max 5.5W	DC12V: max 4.5W PoE: max 6W	DC12V: 3.6W PoE: 4W	
6.41" x 2.65"	4.92" x 4.8"	4.92" x 4.8"	4.9" x 3.6"	4.9" x 2.9"	4.13" x 2.4"	4.13" x 2.4"	6.41" x 2.65"	Main unit: 4.21" x 4.88" x 1.41" Camera sensor: 1.1" x 1.08" Cable length: 21.32ft	

# IP cameras

**NDAА**  
COMPLIANT PRODUCT

LPR camera



2.1MP/1080p cameras



PART NUMBER		DWC-MB45iALPRTW	DWC-MD72Di28T	DWC-MV72Di28TW DWC-MV72Di4TW	DWC-MV82DiVT	DWC-MB62DiVTW
Image	Image sensor	5MP 1/2.8" Star-Light Plus CMOS	2.1MP/1080p 1/2.9" CMOS			
	Total pixels	2592(H) X 1944(V)	2001 (H) X 1121 (V)			
	Minimum scene illumination	0.0 lux (B/W)	0.25 lux (Color)	0.16 lux (Color)	0.16 lux (Color)	0.16 lux (Color)
Audio input/ output		1 line in, 1 line out	---			
Lens	Focal length	6-50mm	2.8mm	2.8mm (DWC-MV72Di28TW) 4.0mm (DWC-MV72Di4TW)	2.7 - 13.5mm	
	Lens type	Vari-focal p-iris lens with motorized-zoom and auto-focus	Fixed lens	Fixed lens	Vari-focal lens	
	IR distance	80ft range	50ft range	80ft range	100ft range	100ft range
	Optical zoom	---	---	---	---	---
	Angle of view	6.9° - 40.8°	109°	103° (DWC-MV72Di28TW) 84° (DWC-MV72Di4TW)	89.6° - 27°	
Operational	Digital noise reduction (DNR)	---	Smart DNR™ 3D digital noise reduction			---
	Wide dynamic range	---	D-WDR			
	Day and night	B/W mode only	True D/N			
	Motion detection	---	Yes			
	Privacy zones	16 privacy masks	16 privacy masks			
	Capture image range	Up to 60'	---			
	Max. vehicle speed	50mph	---			
	Alarm input/output	1 alarm input/output	---			
Network	Video compression type	H.265, H.264, MJPEG	H.265, H.264, MJPEG			
	Frame rate	30fps at all resolutions	30fps at all resolutions			
	Streaming capability	Simultaneous dual-streaming	Simultaneous dual-streaming			
	Onboard storage	Micro SD / SDHC / SDXC	---	---	---	---
	Video management software	DW Spectrum IPVMS, plus other ONVIF conformant VMS				
Environmental	Housing	Bullet	Indoor dome	Ultra low-profile vandal dome	Low-profile vandal dome	Bullet
	Operating temperature	-40°F - 122°F (-40°C - 50°C)	-4°F - 122°F (20°C - 50°C)			
	IP rating	IP66-rated	---	IP67-rated	IP66-rated	IP66-rated
	IK rating	IK 9-rated impact-resistant	---	IK 10-rated impact-resistant	IK 10-rated impact-resistant	---
	Other certifications	FCC, CE, ROHS, UL listed, NDAА compliant	FCC, CE, ROHS, UL listed, NDAА compliant			
Electrical	Power requirements	DC 12V, PoE IEEE 802.3af Class 3	DC 12V, PoE IEEE 802.3af, class 2		DC 12V, PoE IEEE 802.3af, class 3	
	Power consumption	DC12V: max 9W PoE: max 10.5W	DC12V: max 3.8W PoE: max 5.5W	DC12V: max 3.7W PoE: max 5.4W	DC12V: max 4.3W PoE: max 6.2W	DC12V: max 5.2W PoE: max 7.0W
Mechanical	Dimensions	9.73" x 3.8" * Based on the position of the sun shield cover	4.13" x 2.93"	4.13" x 2.4"	4.9" x 3.6"	9.92" x 3.81"

PTZ camera



IP cameras with DMP SecuriCam® video verification



PART NUMBER		DWC-MPTZ336XW	DWC-MPTZ230XTW	DWC-MB75Wi4TWDMP	DWC-MF5Wi4TWDMP	DWC-MB72Wi4TWDMP	DWC-MF2Wi4TWDMP
Image	Image sensor	3MP 1/2.8" Star-Light Plus™ CMOS	2.1MP/1080p 1/3" Star-Light Plus™ CMOS	5MP 1/2.8" Star-Light Plus CMOS, 4MP resolution		2.1MP/1080p 1/2.8" Star-Light Plus CMOS	
	Total pixels	2065 (H) x 1565 (V)	1981(H) X 1288(V)	2593 (H) x 1944 (V)		1945 (H) x 1109 (V)	
	Minimum scene illumination	0.35 lux (color) 0 lux (B/W)	0.05 lux (color) 0 lux (B/W)	0.16 lux (color) 0.0 lux (B/W)		0.09 lux (color) 0.0 lux (B/W)	
Audio input/ output		1x line in and 1x line out		---			
Lens	Focal length	4.6 - 165.6mm	4.3-129mm	4.0mm		4.0mm	
	Lens type	Motorized zoom PTZ lens		Fixed lens			
	IR distance	1148ft range	200ft range	100ft range	50ft range	100ft range	50ft range
	Optical zoom	36x optical zoom	30x optical zoom	---	---	---	---
	Angle of view	58.1-1.9°	65.1°-2.34°	82.3°	82.3°	86°	86°
Operational	Digital noise reduction (DNR)	Smart DNR™ 3D digital noise reduction		Smart DNR™ 3D digital noise reduction			
	Wide dynamic range (WDR)	True WDR		---			
	Day and night	True D/N		True D/N			
	Motion detection	Yes		Yes			
	Privacy zones	16 privacy masks		---			
	Range	360° endless, max. 380° per second	360° endless, max 360° per second				
	Preset sequence	-10-190°, max. 380° per second	5-90°, max 360° per second				
	Tour	256 presets	255 presets				
	Speed	8 tours	10 tours				
	Alarm input	4 alarm inputs	1 alarm input	---			
Alarm output	1 alarm output	1 alarm output	---				
Network	Video compression type			H.264			
	Frame rate			10fps			
	Streaming capability	Quad streaming	Dual-streaming	Based on the DMP system			
	Onboard storage	Micro SD / SDHC / SDXC		---	---	---	---
	Video management software	DW Spectrum IPVMS, plus other ONVIF conformant VMS		DMP*			
Environmental	Housing	PTZ high-speed dome		Bullet	Ultra low-profile vandal dome	Bullet	Ultra low-profile vandal dome
	Operating temperature	-22°F - 131°F (-30°C - 55°C)	-4°F - 122°F (-20°C - 50°C)	-4°F - 122°F (-20°C - 50°C)			
	IP rating	IP66-rated		IP67-rated	IP66-rated	IP67-rated	IP66-rated
	IK rating	IK 10-rated impact-resistant		---	IK 10-rated impact-resistant	---	IK 10-rated impact-resistant
	Other certifications	CE, FCC, RoHS, TAA compliant	CE, FCC, RoHS, UL-listed, NDA compliant	CE, FCC, ROHS, UL-listed, NDA compliant			
Electrical	Power requirements	PoE (UPoE) Class 4 (PoE injector included), DC 12V	PoE IEEE 802.3bt Class 5 (PoE injector included), DC24V, AC24V	DC 12V, PoE IEEE 802.3af Class 3		DC 12V, PoE IEEE 802.3af Class 2	
	Power consumption	PoE: 28W, 500mA DC 12V: 28W, 2.3A	DC24V: 40W, 1666mA AC24V: 35W, 1485mA PoE: 42W, 1750mA	DC12V: max 6.5W PoE: max 8.3W	DC12V: max 5.9W PoE: max 7.2W	DC12V: max 4.5W PoE: max 6.0W	DC12V: max 4.0W PoE: max 5.5W
Mechanical	Dimensions	7.94" x 12.51"	5.9" x 9.13"	6.41" x 2.65"	4.9" x 2.9"	6.41" x 2.65"	4.9" x 2.9"

### 5MP cameras



DWC-MT95WW28TW	DWC-MV95Wi28TW DWC-MV95Wi36TW	DWC-MV95WiATW	DWC-MT95Wi28TW DWC-MT95Wi36TW	DWC-MT95WiATW	DWC-MB95Wi28TW DWC-MB95Wi36TW
5MP 1/2.7" CMOS				5MP 1/2.7" CMOS	
2592 (H) × 1944 (V)				2592 (H) × 1944 (V)	
0.0 lux (B/W)	0.02 lux (color)	0.01 lux (color)	0.02 lux (color)	0.01 lux (color)	0.02 lux (color)
	0.0 lux (B/W)				
1 audio input and 1 microphone built-in	1 audio input and 1 microphone built-in			1 audio input and 1 microphone built-in	
2.8mm	2.8mm (DWC-MV95Wi28TW) 3.6mm (DWC-MV95Wi36TW)	2.8-12mm	2.8mm (DWC-MT95Wi28TW) 3.6mm (DWC-MT95Wi36TW)	2.8-12mm	2.8mm (DWC-MB95Wi28T) 3.6mm (DWC-MB95Wi36T)
Fixed Lens	Fixed lens	Vari-focal remote auto-focus lens	Fixed lens	Vari-focal remote auto-focus lens	Fixed lens
2 white light LEDs, 98ft range	100ft range	164ft range	100ft range	164ft range	164ft range
94.8°	98.5° (DWC-MV95Wi28TW) 81.4° (DWC-MV95Wi36TW)	95.1° - 30°	98.5° (DWC-MT95Wi28TW) 81.4° (DWC-MT95Wi36TW)	95.1° - 30°	98.5° (DWC-MB95Wi28T) 81.4° (DWC-MB95Wi36T)
Smart DNR™ 3D digital noise reduction	Smart DNR™ 3D digital noise reduction				
True WDR				True WDR	
Color mode only				True D/N	
Yes				Yes	
4 programmable privacy masks	4 programmable privacy masks				
---	1 alarm input		---		
---	1 alarm output		---		
H.265, H.264, MJPEG	H.265, H.264, MJPEG				
Up to 30fps at all resolutions	Up to 30fps at all resolutions				
Simultaneous dual-streaming	Simultaneous dual-streaming				
Micro SD / SDHC / SDXC	Micro SD / SDHC / SDXC				
DW Spectrum IPVMS, plus other ONVIF conformant VMS	DW Spectrum IPVMS, plus other ONVIF conformant VMS				
Turret	Vandal dome		Turret		Bullet
-22°F - 140°F (-30°C - 60°C)	-22°F - 140°F (-30°C - 60°C)				
IP67-rated	IP67-rated				
IK10-rated impact-resistant	IK 10-rated impact-resistant				
CE, FCC, ROHS, NDAA compliant	CE, FCC, ROHS, NDAA compliant				
DC 12V, PoE IEEE 802.3af Class 3.	DC 12V, PoE IEEE 802.3af Class 3.				
< 7W	<6W	<9W	<7W	<9W	<9W
4.66" x 3.58"	4.59" x 3.54"	5.43" x 3.93"	4.66" x 3.58"	5.16" x 4.13"	8.69" x 3.16" x 2.77"

# IP cameras

## V-Class 4MP cameras

**NDA A**  
COMPLIANT PRODUCT



PART NUMBER		DWC-VSDG04Bi	DWC-VSDG04Mi	DWC-VSTB04Bi	DWC-VSTB04Mi	DWC-VSBD04Bi	DWC-VSBD04Mi
Image	Image sensor	4MP 1/3" CMOS					
	Total pixels	2560 × 1440					
	Minimum scene illumination	0.005 lux (color) 0.0 lux (B/W)					
Audio input/ output		1 audio input and 1 microphone built-in	1 audio input and 1 microphone built-in/ 1 output	1 audio input and 1 microphone built-in			
Lens	Focal length	2.8mm	2.8-12mm	2.8mm	2.8-12mm	2.8mm (DWC-MB95Wi28T)	2.8-12mm
	Lens type	Fixed lens	Vari-focal remote auto-focus lens	Fixed lens	Vari-focal remote auto-focus lens	Fixed lens	Vari-focal remote auto-focus lens
	IR distance	100ft range	164ft range	100ft range	164ft range	164ft range	164ft range
	Angle of view	94°	92°-31°	94°	92°-31°	94°	92°-31°
Operational	Digital noise reduction (DNR)	Smart DNR™ 3D digital noise reduction					
	Wide dynamic range (WDR)	True WDR					
	Day and night	True D/N					
	Motion detection	Yes					
	Privacy zones	8 programmable privacy masks					
	Alarm input	---					
	Alarm output	---					
Network	Video compression type	H.265, H.264, MJPEG					
	Frame rate	Up to 30fps at all resolutions					
	Streaming capability	Simultaneous dual-streaming					
	Onboard storage	Micro SD / SDHC / SDXC					
	Video management software	DW Spectrum IPVMS, plus other ONVIF conformant VMS					
Environmental	Housing	Vandal dome		Turret		Bullet	
	Operating temperature	-22°F - 140°F (-30°C - 60°C)					
	IP rating	IP67-rated					
	IK rating	IK 10-rated impact-resistant					
	Other certifications	CE, FCC, ROHS, NDA A compliant					
Electrical	Power requirements	DC 12V, PoE IEEE 802.3af Class 3.					
	Power consumption	<4.5W	<7.5W	<5W	<8W	<8W	<8W
Mechanical	Dimensions	4.59" x 3.54"	5.55" x 3.93"	4.25" x 3.77"	5.16" x 4.29"	8.69" x 3.16" x 2.77"	8.69" x 3.16" x 2.77"

# IP Cameras

**MEGAPIX CaaS**™ 5MP 4MP

Camera as a System



Built for Users.™  
**NDAA**  
COMPLIANT PRODUCT

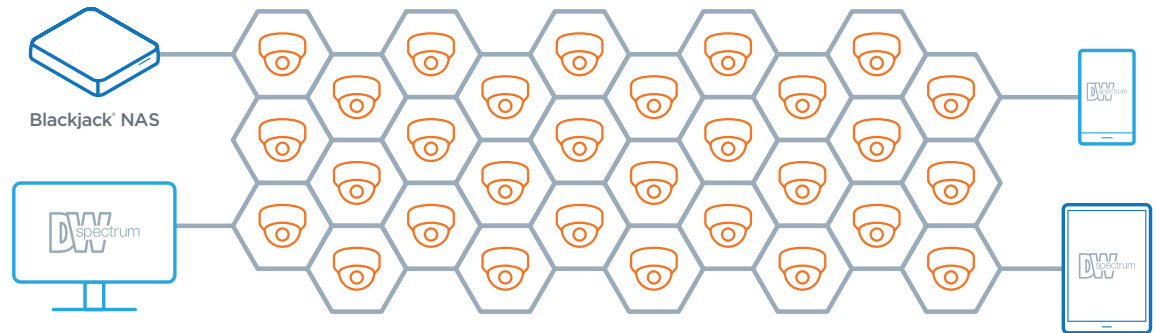
## What is CaaS?

DW's Camera as a System edge solutions is *YOUR* cloud solution, allowing business owners to setup a complete single- or multi-site surveillance system with no server or NVR required. The cameras can easily be managed via the full-featured DW Spectrum IPVMS pre-installed on the cameras. The software lets you access your system from any computer, any mobile phone and any tablet, with no recurring fees or high network bandwidth dependencies. No software to buy and install, no license keys and no OS to maintain.



## Camera as a System.

The CaaS™ solution supports multiple cameras in the same network, and unlimited systems all accessible and manageable via DW Spectrum® client, app, and DW Cloud™.



## Features:

4MP/5MP Resolution
UP TO 1TB Local Recording Storage
DW spectrum All-in-one cameras
No Server Required
Fisheye Lens
LPR
IP66 Rated
5 YEAR Warranty

- All-in-one cameras, no server required
- 5MP and 4MP image sensor options
- LPR technology captures reflective license plates up to 50mph\*
- Built-in 1TB and 512GB storage options for up to 90 days retained video\*
- Support 360° fisheye view and 360°, 180° and 90° panoramic views\*
- DW Spectrum IPVMS preloaded for out-of-the-box operation
- 24/7 access to live and recorded video feed
- Edge-to-edge image clarity
- Automatic installation and licensing with first power on
- Connect multiple MEGApix CaaS edge cameras in the same network
- True Wide Dynamic Range (WDR)\*
- Dual recording option with Blackjack NAS appliance
- Dual codecs (H.264, MJPEG) with simultaneous dual-stream
- Cold start -40°F (-40°C)\*
- 50-140ft smart IR™ with intelligent camera sync\*
- CleanView™ hydrophobic dome coating\*
- Smart DNR™ 3D digital noise reduction
- True day/night with IR cut filter
- Programmable privacy zones
- Auto gain control (AGC)
- Backlight compensation (BLC)
- Auto white balance (AWB)
- Motion detection
- Two-way audio\*
- Alarm input and relay output\*
- Web server built-in
- Waterproof cabling\*
- NDAA compliant
- UL-listed
- IP66-rated
- IK10-rated impact-resistant\*
- 5 year warranty



\* See data sheets for specifications per camera.

MEGApix Camera as a System (CaaS™) IP cameras function as camera and recorder, eliminating the need for a dedicated server.



**NDAA**  
COMPLIANT PRODUCT

Fisheye camera



LPR camera



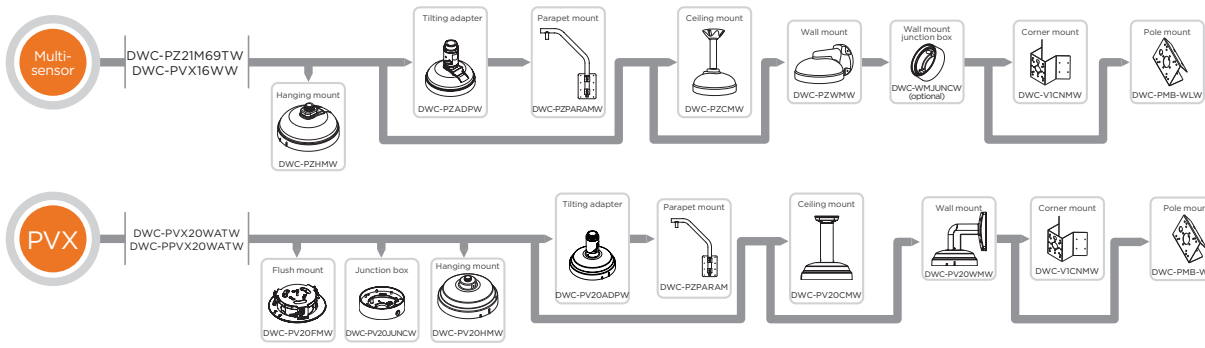
4MP camera



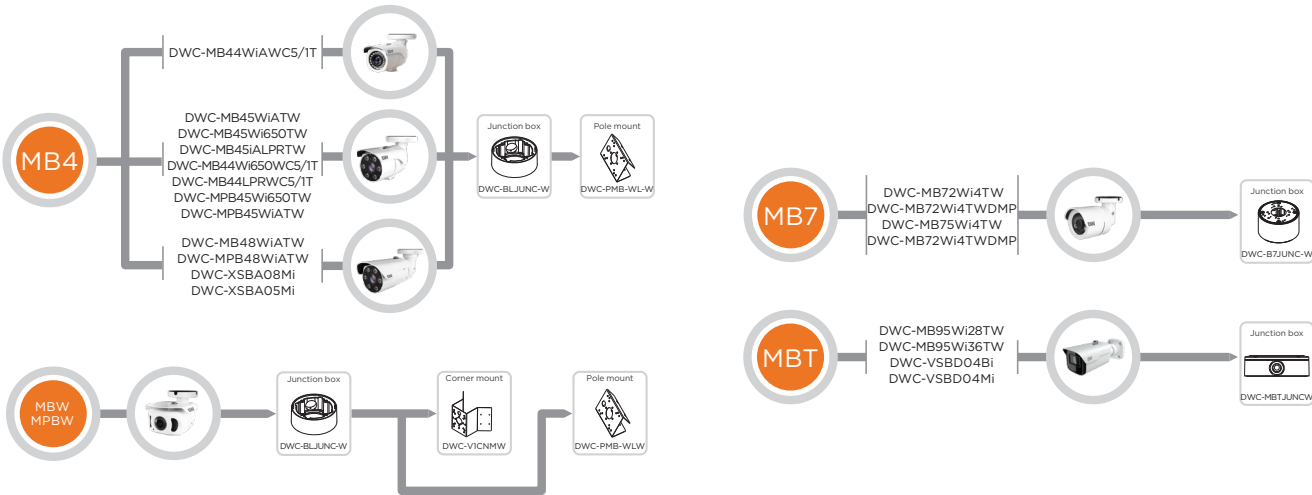
PART NUMBER		DWC-PVF5M1TIRWC5 DWC-PVF5MITIRWCIT	DWC-MB44LPRWC5 DWC-MB44LPRWCIT	DWC-MB44Wi650WC5 DWC-MB44Wi650WCIT	DWC-MB44WiAWC5 DWC-MB44WiAWCIT	DWC-MV84WiAWC5 DWC-MV84WiAWCIT	DWC-MF4Wi6WC5 DWC-MF4Wi6WCIT	DWC-MF4Wi4WC5 DWC-MF4Wi4WCIT	
Image	Image sensor	6.4MP 1/1.8" CMOS	4MP 1/3"x CMOS	4MP 1/3"x CMOS	4MP 1/3"x CMOS	4MP 1/3" CMOS	4MP 1/3" CMOS	4MP 1/3" CMOS	
	Total pixels	3096 (H) X 2080 (V)	2688 (H) x 1520 (V)	2688 (H) x 1520 (V)	2688 (H) x 1520 (V)	2688 (H) x 1520 (V)	2688 (H) x 1520 (V)	2688 (H) x 1520 (V)	
	Minimum scene illumination	0.39 lux (color) 0 lux (B/W)	0 lux (B/W)	0.26 lux (color) 0.0 lux (B/W)	0.2 lux (color) 0.0 lux (B/W)	0.2 lux (color) 0.0 lux (B/W)	0.41 lux (color) 0.0 lux (B/W)	0.41 lux (color) 0.0 lux (B/W)	
Audio input/ output		---	---	1 line in, 1. line out	1 line in, 1. line out	---	---	---	
Lens	Focal length	1.55mm, F2.5	6.0 - 50mm	6.0 - 50mm	2.8 - 12mm	2.8 - 12mm	6.0mm	4.0mm	
	Lens type	Fisheye lens	Motorized zoom auto-focus p-iris lens	Motorized zoom auto-focus p-iris lens	Motorized zoom auto-focus p-iris lens	Motorized zoom auto-focus p-iris lens	Fixed lens	Fixed lens	
	IR distance	55ft range	60ft range	140ft range	120ft range	100ft range	50ft range	50ft range	
	Field of view (FoV)	360°	90° - 7.3°	90° - 7.3°	87° - 32°	87° - 32°	51°	81°	
Operational	Image capture range	---	Up to 60' and 50mph	---	---	---	---	---	
	Digital noise reduction (DNR)	Smart DNR™ 3D digital noise reduction							
	Wide dynamic range	D-WDR	---	True WDR	True WDR	True WDR	True WDR	True WDR	
	Day and night	True D/N	B/W mode only	True D/N	True D/N	True D/N	True D/N	True D/N	
	Motion detection	Yes							
	Privacy zone	4 programmable privacy masks	16 programmable privacy masks				4 programmable privacy masks		
	Alarm input	---	---	1 alarm input	1 alarm input	---	---	---	
Alarm output	---	---	1 alarm output	1 alarm output	---	---	---		
Network	Video compression type	H.264, MJPEG							
	Frame rate	Up to 30fps at all resolutions							
	Streaming capability	Dual-stream at different rates and resolutions							
	Video management software	DW Spectrum IPVMS, plus other ONVIF conformant VMS							
	Number of DW Spectrum® CaaS™ licenses included	1 DW Spectrum CaaS license included							
	Local server recording	DWC-PVF5M1TIRWC5: 512GB DWC-PVF5MITIRWCIT: 1TB	DWC-MB44LPRWC5: 512GB DWC-MB44LPRWCIT: 1TB	DWC-MB44Wi650WC5: 512GB DWC-MB44Wi650WCIT: 1TB	DWC-MB44WiAWC5: 512GB DWC-MB44WiAWCIT: 1TB	DWC-MV84WiAWC5: 512GB DWC-MV84WiAWCIT: 1TB	DWC-MF4Wi6WC5: 512GB DWC-MF4Wi6WCIT: 1TB	DWC-MF4Wi4WC5: 512GB DWC-MF4Wi4WCIT: 1TB	
Max. number of CaaS™ cameras in the same network/system	Up to 30 MEGApix® CaaS™ cameras in the same network/system								
Environmental	Housing	Fisheye vandal dome	Bullet	Bullet	Bullet	Low-profile vandal dome	Ultra low-profile vandal dome	Ultra low-profile vandal dome	
	Operating temperature	-4°F - 122°F (-20°C - 50°C)	-40°F - 122°F (-40°C - 50°C)	-40°F - 122°F (-40°C - 50°C)			-4°F - 122°F (-20°C - 50°C)		
	IP rating	IP66-rated		IP66 environmental-rated dust-tight and water-resistant			IP66-rated		
	IK rating	---	---	---	---	IK 10-rated impact-resistant	IK 10-rated impact-resistant	IK 10-rated impact-resistant	
	Other certifications	FCC, CE, ROHS, UL-listed, NDA compliant							
Electrical	Power requirements	DC12V, POE IEEE 802.3af class 3. Adaptor not Included.							
	Power consumption	LED on: 6.5W LED off: 3.6W	DC12V max 11W PoE max 12.9W	DC12V max 11W PoE max 12.9W	DC12V max 11W PoE max 12.9W	DC12V: max 7.1W PoE: max 9.2W	DC12V: max 5.6W PoE: max 7.4W	DC12V: max 5.6W PoE: max 7.4W	
Mechanical	Dimensions	4.9" x 1.88"	9.73" x 3.8"	9.73" x 3.8"	8.77" x 3.07"	4.9" x 3.6"	4.9" x 2.9"	4.9" x 2.9"	

# Camera accessories

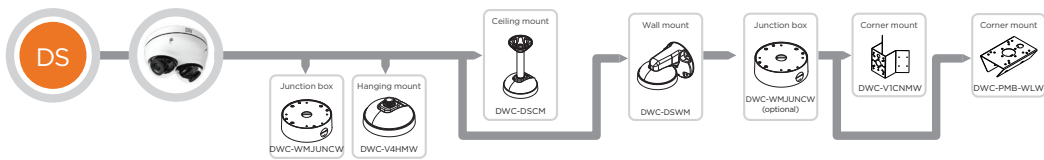
## Multi-sensor dome cameras



## Weather resistant bullet cameras



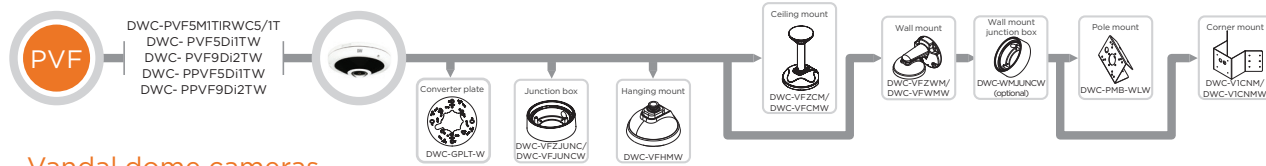
## Weather resistant bullet cameras



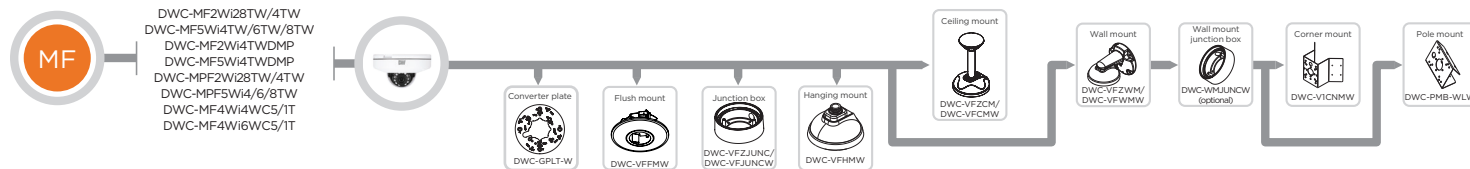
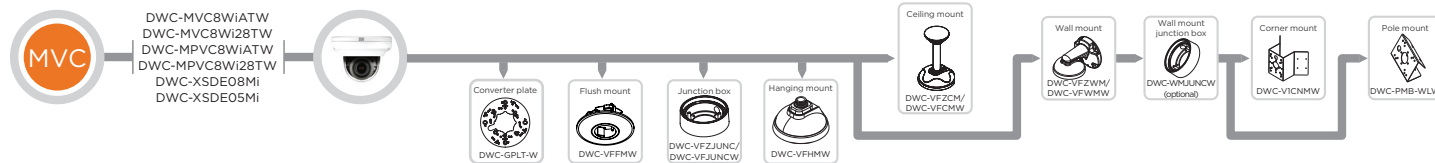
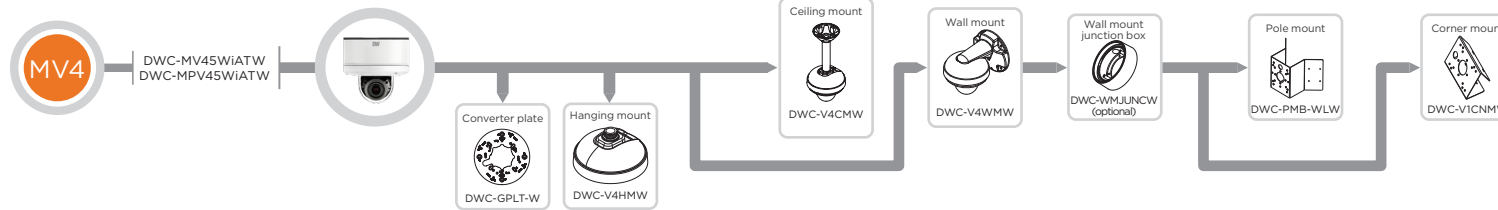
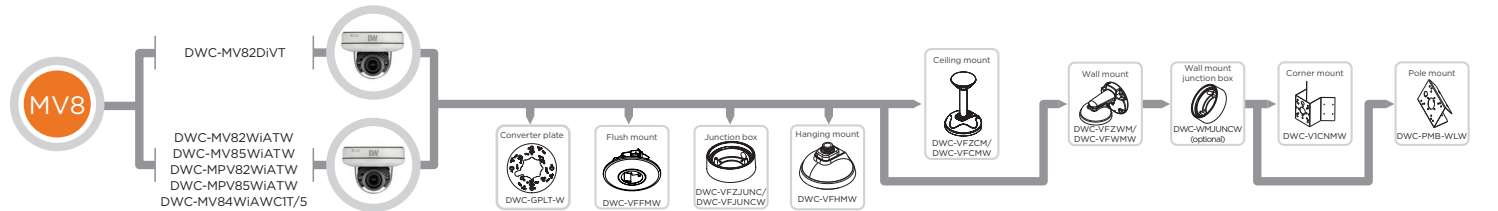


# Camera accessories

## Vandal fisheye cameras

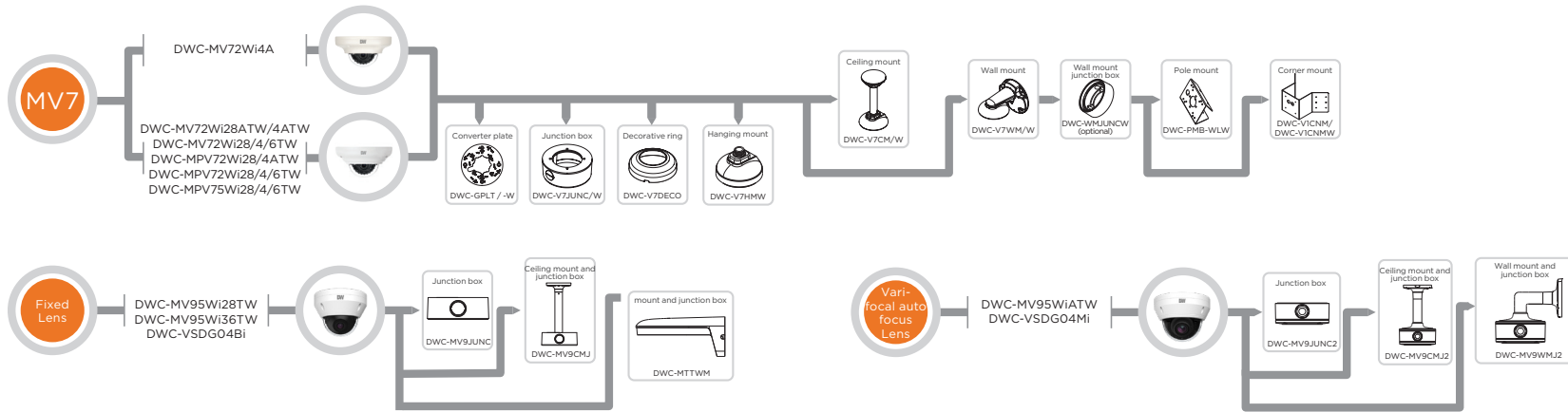


## Vandal dome cameras



# Camera accessories

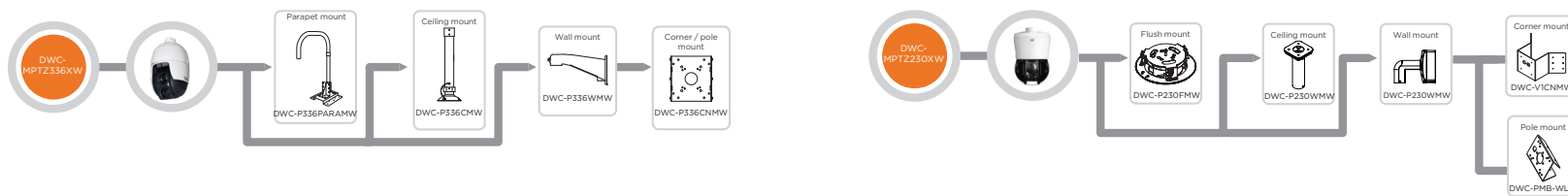
## Vandal dome cameras



## Turret cameras



## Pan, tilt, zoom dome camera

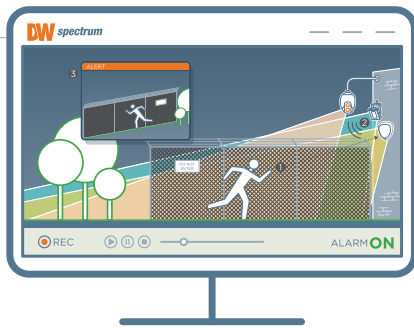


## ATM pinhole camera



## Complement your surveillance system with motion detectors and illuminators.

SiteWatch motion detectors and illuminators upgrade any system needing external lighting or motion detection. All detectors and illuminators are fully integrated with DW Spectrum IPVMS and can be managed remotely.



### Manage with DW Spectrum IPVMS.

As the detectors sense motion illuminators and cameras turn on and activate recording and notifications.

**DW spectrum**  
IPVMS  
Complete Scalable Video Management

#### Illuminators Features\*:

- IR, white light and hybrid LED illuminators
- Interchangeable lens pack to deliver a variety of angles out of the box
- Direct integration with DW Spectrum IPVMS
- Create different elliptical beam profiles
- Motion activated
- Coverage distance up to 374' (115m)/614' (187m)\*
- CleanView hydrophobic coating repels water, dust and grease\*
- Configure lights to switch on when motion is detected
- Activate white-light to deter intruders\*
- Remotely adjustable photocell and illumination levels
- 850nm/940nm wavelength\*
- Ultra-white FFI 6000K white-light\*
- Visible spectrum wavelength (400- 750nm)\*
- Vibration/shock sensor\*
- Web Interface built-in
- High-power Dual-Core LEDs with advanced, current limited and integral control circuitry
- NDAA/TAA compliant
- IP66 environmental-rated dust-tight and water-resistant
- IK 09-rated impact-resistant

#### Motion detector Features\*:

- External movement detector
- Quad element passive infra-red (PIR) sensor
- PIR and microwave detection technologies
- Two (2) volt-free outputs and two (2) negative-switched outputs
- Up to 98.5ft (30m) / 1640ft (500m) detection\*
- Exceptional resistance to false alarms
- Advanced signal processing, quad pyro and optical systems
- Trigger lights and smart devices when movement is detected
- 10° - 70° detection angle\*
- Direct integration with DW Spectrum IPVMS
- Intruder notifications
- Set up lux-level events to operate blinds and curtains
- Environmental temperature monitoring to help manage internal air conditioning and heating
- 20 Fully adaptable alarm zones to meet any situation\*
- IP alarms and relay output (DW-DTLA500)
- Alarm notifications (DW-DTLA500)
- Web Interface built-in
- PoE class 1 and 2 and DV48V
- NDAA/TAA compliant
- IP environmental-rated housing

Built  
for  
Users.™

#### Illuminators Accessories:



DW-ILWM1  
Mounting bracket for a single (1) illuminator



DW-ILWM2  
Mounting bracket for two (2) illuminators



DW-ILWM3  
Mounting bracket for three (3) illuminators



DW-ILPM1  
Pole mount bracket for a single (1) illuminator

\* Not all products carry same features. See product data sheets for all specifications

# Illuminators and motion detectors

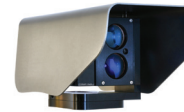


Illuminators

**NDAА/TAA**  
COMPLIANT PRODUCT

SPECIFICATIONS	DW-ILHYBIP850 / DW-ILHYBIP940	DW-ILIRIP850 / DW-ILIRIP940	DW-ILWLIPM
Construction	Robust high-quality aluminum extrusion, black anodized finish		
Photocell	Software adjustable 20 - 70 lux		
Illumination	Software adjustable 10% - 100% with pulse modes		
Operating temperature	-58° to 140°F (-50° to 60°C)	-58°F to 122°F (-50°C to 50°C)	
Mount	Powder coated stainless steel wall mount		
Input	PoE+ (IEEE802.3at)		
Consumption	26W		
IP rating	IP66 environmental-rated dust-tight and water-resistant		
IK rating	IK09 impact-resistant in accordance with IEC/EN 62262	---	---
Electronics	High-efficiency surface mount high power Dual-Core™ LEDs with advanced, current limited, integral control circuitry		
Lumen output	1800 lm	---	2400lm
Color temperature	Ultra white ≈ 6000K	---	5700K (6000K and 6500K options available to order)
Color rendering index	>70	---	Typ. 80
Recommended PSU	Any IEEE 802.3at injector (not included)		
Remote access	Web browser user interface. Full control via DW Spectrum IPVMS		
Wavelength	850nm (DW-ILHYBIP850) 940nm (DW-ILHYBIP850)	850nm (DW-ILHYBIP850) 940nm (DW-ILHYBIP850)	400- 750nm
Coverage distance	614' (187m) (DW-ILHYBIP850) 374' (115m) (DW-ILHYBIP850)	614' (187m) (DW-ILHYBIP850) 374' (115m) (DW-ILHYBIP850)	374' (115m)
Shock sensor and pressure equalization vent	Prevents thermal expansion and pressure cycling	---	---
Warranty	2 year warranty		

Laser sensor



**NDAА/TAA**  
COMPLIANT PRODUCT

SPECIFICATIONS	DW-DTLA500
Field of application	Outdoor surveillance and monitoring
Alarm zones	Up to 20 fully adaptable zones, each zone has individual alarm sensitivity settings and alarm actions.
Alarm actions	Network alarm, relay, Easy direct integration with IP to VMS, enabling PTZ control, automatic video recording and object position.
Self awareness	Adaptive digital processing algorithm suppresses noise from fog and snow, and detects challenging weather to allow alarms to VMS.
Detection range	0 - 1640ft (500m)
Detection resolution	+/- 1 dm
Update rate	250 Hz
Laser wavelength	905nm
Beam divergence	2.0 x 2.0 mRad
Alignment laser	Yes
Laser class	Class 2 laser product, eye-safe
Power supply	Power over Ethernet (48V DC) or 12 V DC
Power consumption	4W (PoE class 2)
Operating temperature	-22°F to +140°F (-30°C to +60°C)
Interface	Ethernet IEEE 802. 3af, TCP/IP, web browser used interface
Relay switch	Max 30V 200mA, NC and NO
Mounting	4 x M5 - Bosch compatible 2.87" x 1.61" (73 x 41mm) 4 x M5 - Axis compatible 1.57" x 2.44" (40 x 62mm) 2 x M6 - common standard 2.87" (73mm C-C) 5/8"-11 UNC (tripod mount)
Enclosure rating	IP66
Color	Shell: gray, sensor: black
Weight	2.4Kg
Warranty	1 year warranty

Motion detectors



**NDAА/TAA**  
COMPLIANT PRODUCT

SPECIFICATIONS	DW-DTMWIPW	DW-DTPWIPW
Detection range	Up to 98.5ft (30m) programmable	
Coverage	10° - 70° detection angle, 98.5ft x 98.5ft (30m x 30m) max.	
Sensing module	Dual-tech: Microwave + quad PIR	Quad PIR
Walk test	Output test mode with LED indication	
Operating temperature	-4°F to 131°F (-20°C to +55°C) conformally coated electronics for increased stability	
Adjustment	180° pan + 90° tilt	
Mounting height	Optimum 9.8ft (3m)	
Indicator LEDs	1 x blue LED on alarm	1 x blue LED on alarm 1 x red PIR detection 1 x green microwave detection
Outputs	Two N/C volt free relay contacts. Web interface set up required.	
Power input	Power over Ethernet (48V DC)	
Power consumption	Max 3.8W, PoE class 1	
Ethernet standard	Ethernet IEEE 802.3af, TCP/IP	
Remote access	Web browser user interface. No software or installation needed	
Microwave frequency	10.525GHz	---
Warranty	2 year warranty	

## Motion Detection Accessories:



DW-DTWMDTLA5  
Mounting bracket



DW-DTWT  
Walk tester



DW-DTCAW  
Conduit adaptor



DW-DTPM  
Pole mount bracket

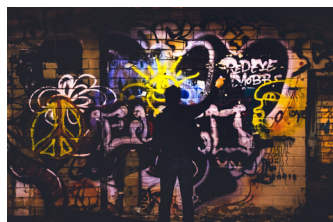
## An ideal, standalone audio solution, scalable and flexible approach to system design.

The outdoor IP speaker is a robust, IP-enabled audio device that helps to proactively deter crime by enabling the speaker to respond to events in real time with automated and manual voice alerts.



### Audio for deterrence

Combine DW's horn speaker with video and alarm systems to create deterrence and prevent crime or damage to your property.



### Audio for operations

A cost-effective solution for delivering non-emergency messages to public areas.



### Audio for safety

Deliver up-to-the-minute information and guide the public and your workforce in emergencies.



### Speaker Features:

- All-in-one IP speaker system
- Compatible with IP cameras via DW Spectrum IPVMS
- Compatible with VoIP devices (IPPBX, IP Phone) via SIP
- Support pre-recorded messages, live responses, alarms and background music
- Schedule audio alerts
- Support HPPT API for alarm-in transmit
- Web server built-in
- ONVIF conformant
- PoE Class 3 and DC12V-24V
- Wall mount bracket included
- IP67 dust-tight and waterproof to 3 feet
- 2 year warranty

### Manage with DW Spectrum IPVMS

DW's horn speaker can be managed and controlled entirely from the DW Spectrum client interface.



SPECIFICATIONS	DW-SWS15
Codec	OPUS 48 kHz, MP3 44.1 kHz, G.722 ADPCM 16 kHz, G.711 PCMU 8 kHz, G.711 PCMA 8 kHz
Max SPL	113dB
Frequency response	300Hz-8KHz
Frequency range	500-2KHZ +-10dB 400-12KHZ +-20dB
Harmonic distortion	0.1@1kHz
Signal to noise ratio	91dB
Amplifier	Built-in 15W amplifier
Security	Password protection, IP address filtering, digest authentication, user access log, firewall
Network protocol	SIP, ONVIF, HTTP, IPv4, DHCP, RTSP, RTP, RTCP, TCP, UDP, ARP, FTP, TFTP, NFS, NTP
Network interface	10/100 Base-TX, RJ45
VoIP	Support for SIP protocol for integration with VoIP systems, integrated with SIP/PBX. 2 SIP accounts, SIP direct IP call, RTP multicast Codec: OPUS, MP3, G.722, PCMU, PCMA
Operating temperature	-22°F - 140°F (-30°C - 60°C)
Operating humidity	5%-85%
Material	ABS (IP67-rated)
Rate power	15W
Power supply	PoE or 12-24V
Installation	Wall-mounted (wall mount bracket included)
Dimensions	8.85" x 6.49" x 9.44" (225 x 165 x 240mm)
Net weight	2.86 lbs (1.3 kg)
Warranty	2 years

# Network appliances



The easiest transition from analog to IP.

**TAA**  
COMPLIANT PRODUCT



SPECIFICATIONS	DW-ENHD16
Video input	16 HD over Coax* technology with HD-Analog, HD-TVI and CVBS analog signal up to 2.1MP/1080p
Video output	16 IP channels
Local display	True HD/VGA: 1/4/9/16 Split, PIP, Sequence Spot: 1/16 Split, Sequence
Resolution	Main stream: 240fps @ 2.1MP/1080p Sub Stream: 240fps @ VGA
Video encoding	H.264
AUDIO	
Input	4 audio input
Output	1 RCA audio output, 1 HD audio output
INTERFACE	
Alarm input	4 inputs
Alarm output	1 output
RS-232	---
RS-485	2x RS485, 3x USB, UTC PTZ control via Coax (HD-Analog, HD-TVI)
GENERAL	
ONVIF Conformant	Yes, profile S
Power requirements	DC12V (2A)
Power consumption	Max. 14.4W
Dimensions	14.76" x 1.76" x 12.52"
Rack-mountable	DW-EN19RE (included)



Place a public view monitor anywhere.

**NDA/TAA**  
COMPLIANT PRODUCT



SPECIFICATIONS	DW-HDSPOTMOD	DW-HDSPOTMOD16
Operating system	Embedded Linux*	
Video compression	H.265, H.264	
IP camera	Input	4 channels
Display	Speed	Up to 120fps
	Screen mode	Up to 480fps
Video-in	Single channel, quad view mode, sequence	Single channel, 16-Ch view mode, sequence
	Resolution	IP cameras (up to 4K, 3840 x 2160 resolution), Universal HD over Coax* VMAX* A1™ DVRs or VMAX* IP Plus™ NVRs
Video-out	Monitor	True HD and/or VGA
Network function	Resolution	True HD: 3840x2160, 1920x1080, 1280x720, 1024x768 VGA: 1920x1080, 1280x720, 1024x768
	Time synchronization by NTP server	
System recovery after power failure	Auto-reboot and log file system	
Advanced functions	Firmware upgrade by USB and CMS	
	Import and export settings	
System operation	Digital zoom	
	USB mouse	
ENVIRONMENTAL		
Power	DC12V	
Operating temperature	41°F - 104°F (5°C - 40°C)	
Dimensions	5.47" x 4.84" x 1.25"	








Added storage for any solution.

**NDA/TAA**  
COMPLIANT PRODUCT



PART NUMBER	DW-BJNASxT / DW-BJNASxTR
Operating system	Linux* embedded
Form factor	Desktop
Maximum hard drives	2 x SATA HDD
Maximum storage capacity	DW-BJNASxT: 20TB (2x 10TB) DW-BJNASxTR: 10TB (2x 10TB, RAID1)
RAID	RAID1 (DW-BJNASxTR)
Max. recording channel	Max 24 2.1MP/1080p IP cameras
Max. recording bandwidth	Max. 120Mbps throughput
LED indicators	HDD status, power
LCD	---
Audible alert	---
E-mail notifications (optional)	---
Remote configuration	Blackjack NAS web management console, DW IP Finder™
Supported IPVMS	DW Spectrum IPVMS
Operating temperature	41°F-104°F (5°C-40°C)
Power supply	DC 12V
Power consumption	36W, 3A
Dimensions (WxDxH)	10.2" x 11.2" x 2.1"
Weight	3.3lbs
Warranty	5 year limited

# Applications to manage your system remotely

					
<b>Application:</b>	<b>C3 CMS</b>	<b>DW Mobile Plus™ app</b>	<b>DW Witness app</b>	<b>DW Spectrum mobile app</b>	<b>DW Site Viewer for Apple TV</b>
<b>Recorders:</b>	<b>Windows and Mac</b>	<b>iOS and Android</b>	<b>iOS and Android</b>	<b>iOS and Android</b>	<b>Apple TV</b>
<b>Servers with DW Spectrum IPVMS</b>	---	---	○	○	○
<b>VMAX IP Plus</b>	○	○	○	---	○

## Camera part numbering system

### IP cameras launched in 2023 and onward

Model	Technology class	Camera/sensor type	Housing type	Case	Resolution	Focal length	LED built-in	CaaS storage/ANPR (optional)
DWC-	C: MEGApix CaaS M: MEGApix Non-Ai V: MEGApix V-Class X: MEGApix Ai	D: Dual-sensor F: Fisheye M: Multi-sensor P: PTZ S: Single-sensor	B: Bullet C: Covert D: Dome T: Turret	A-Z: For internal use	O2: 2MP/1080p O4: 4MP O5: 5MP O8: 8MP/4K O9: 9MP O10: 10MP O20: 20MP O21: 21MP O48: 48MP	A: 1 ~ 1.9 B: 2 ~ 2.9 C: 3 ~ 3.9 D: 4 ~ 4.9 E: 5 ~ 5.9 F: 6 ~ 6.9 G: 7 ~ 7.9 H: 8+ V: Vari-focal (manual) M: Vari-focal (motorized zoom and auto focus)	F: Flash LED i: IR N: Natural W: White LED	A: SSD 512GB B: SSD 1TB C: SSD 2TB L: ANPR M: MMCR 1: 512GB 2: 1TB
DWC-	V	S	T	B	O4	B	i	---
DWC-	X	S	D	E	O8	M	i	---

Example 1: DWC-VSTB04Bi = MEGApix V-Class, single-sensor turret camera, 4MP, 2.8mm fixed lens, IR built-in.

Example 2: DWC-XSDE08Mi = MEGApix Ai, single-sensor dome camera, 4K, vari-focal lens with motorized zoom and auto focus, IR built-in.

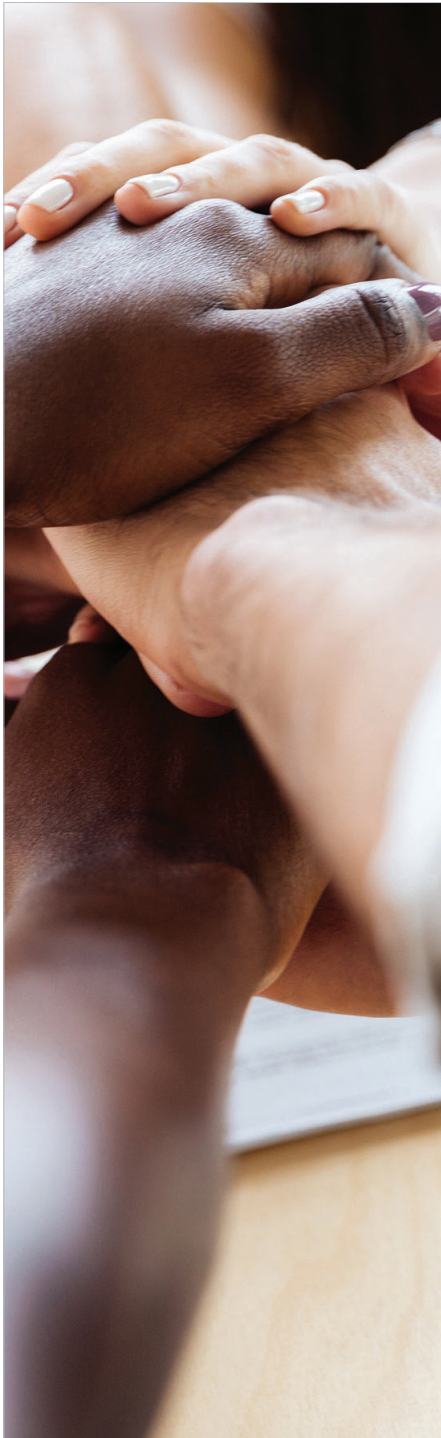
### IP cameras launched before 2023

Model	Technology	Housing type	Case	Resolution	WDR	IR	Lens	Special feature	H.265	Color
DWC-DW Camera	M-Megapixel P-Pano MP- IVA+	B: Bullet C: Box D: Indoor dome F: Ultra low-profile vandal dome PTZ: pan, tilt, zoom T: Turret V: Vandal dome VF: Fisheye	Internal use	2: 2.1MP/1080p 4: 4MP 5: 5MP 6: 6MP 8: 4K 9: 9MP 16: 16MP 21: 21MP 48: 48MP	W: True WDR D: Digital WDR	i	28: 2.8mm 4: 4mm 6: 6mm 8: 8mm A: Auto-focus V: Vari-focal	V: Value line LPR: LPR 650: Long Range A: Audio C1: CaaS 128GB C6: CaaS 60GB	T: Triple codec H.265/H.264/MJPG	B: Black W: White
DWC-	MP	F	-	2	W	i	4	-	T	W
DWC-	M	V	8	4	W	i	A	-	-	-

Example 1: DWC-MPF2Wi4TW= MEGApix IVA+ ultra low-profile vandal dome, 2.1MP/1080p, true WDR, IR built-in, 4.0mm fixed lens, triple codec, white housing.

Example 2: DWC-MV84WiA = MEGApix low-profile vandal dome, 4MP, true WDR, IR built-in, vari-focal lens with remote zoom and auto focus.

# Support and resources ensure success



Exceptional pricing and service for our best customers.



See program details for qualifications and inclusions.

The DW Channel Partner Program is dedicated to those who sell the complete line of Digital Watchdog surveillance solutions.

## What's in it for me?

With your annual purchase commitment, you receive:

- ✓ Enhanced margins
- ✓ Project pricing / Map pricing
- ✓ Project design support
- ✓ Demo support and equipment pricing
- ✓ Pre- and post-sales support
- ✓ Sales lead allocation
- ✓ Extended warranties
- ✓ Advanced replacement & repair request
- ✓ DW University professional certification
- ✓ Product & technical training online (LMS)
- ✓ New product announcements
- ✓ Partner portal access
- ✓ Co-marketing materials
- ✓ Case Study support
- ✓ Enhanced technical support
- ✓ Registered project technical support
- ✓ Technical knowledgebase

[portal.digital-watchdog.com](http://portal.digital-watchdog.com)



## Your online home for deep learning.

DW has developed DW University Online, a self-paced learning environment where you can earn product certification when it meets your schedule— anytime, on demand training.

Registration is free. An annual subscription gives you unlimited access to all courses.

DW Spectrum's training program has three learning components:



### Video Modules:

Each module focuses on a significant subject, available for viewing or download.



### DW Spectrum Training Lab:

Training lab scenarios reinforce the skills you have learned in each video module.



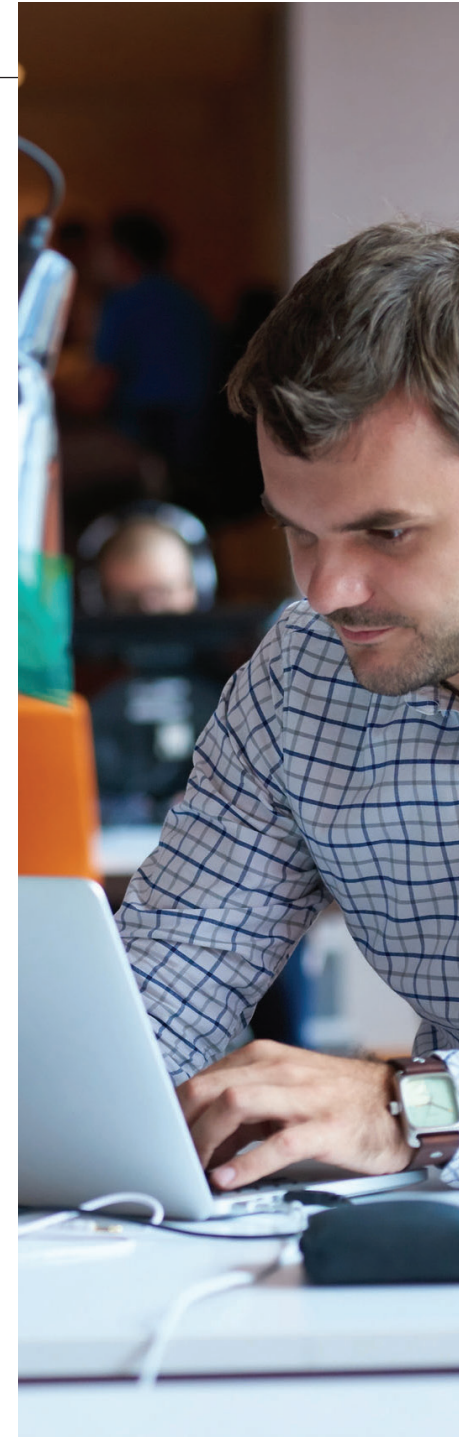
### DW Spectrum Exam:

When you pass the final exam, you will be certified on DW Spectrum®.

### Key features:

- ✓ Mobile-friendly
- ✓ Self-paced
- ✓ Collaborative tools and activities
- ✓ Up to date and immediate
- ✓ Modern and easy to use
- ✓ Cost-effective
- ✓ Unlimited access
- ✓ Built-in quizzes and exams
- ✓ Certificate of completion provided
- ✓ Engaging user experience
- ✓ Notifications and messaging
- ✓ Track your progress online

<https://dwuniversity.digital-watchdog.com>



HD OVER COAX™ PRODUCT  
QUICK REFERENCE GUIDE

REV. 03/22



Star-Light™ HD over Coax™ cameras



C3™ CMS Command . Control . Communicate



VMAX™ digital video recorders



SiteWatch™ perimeter protection appliances



Star-Light Plus™ color in near-total darkness technology



Star-Light Plus™ true 90° view ball cameras

Built  
for  
Users.™



**NDAA/TAA**  
COMPLIANT PRODUCT

# Universal HD over Coax<sup>®</sup> products

---



## SOFTWARE

---

### **C3™ CMS Remote management software**

C3 is a groundbreaking, easy to use remote management software for DW VMAX<sup>®</sup> embedded analog and IP recorders.

### **DW mobile apps**

DW mobile apps for iOS<sup>®</sup> and Android<sup>®</sup> allow you to view, playback and monitor your systems on a smartphone or tablet.



## CAMERAS

---

### **Star-Light Plus™ Universal HD over Coax<sup>®</sup>**

Star-Light™ Universal HD over Coax<sup>®</sup> cameras use coaxial cables to transmit crystal-clear images up to 4K and increase system ROI.

### **Universal HD over Coax<sup>®</sup> LPR**

The Universal HD over Coax<sup>®</sup> 2.1MP/1080p LPR camera delivers reliable license plate capture from a range of 13-115 feet in moving vehicles up to 50mph.

### **Star-Light™ PTZ**

The Star-Light™ HD-Analog 20x PTZ is a high performance, super speed camera with 20x optical zoom and auto-focus lens.



## NETWORK APPLIANCES

---

### **Compressor™ encoders**

Compressor signal encoders convert all analog signals into IP streams.

### **DW Spot™ monitoring module**

Create instant public monitors from your surveillance system with DW Spot.



## RECORDERS

---

### **VMAX<sup>®</sup> A1 G4™**

NDAA-compliant Universal HD over Coax<sup>®</sup> DVRs support HD-Analog and HD-TVI formats up to 4K.

# Table of contents

---

C3 CMS remote management and event server software .....	4
VMAX A1 G4 NDAA Universal HD over Coax DVRs .....	6
Star-Light Plus color in near-total darkness Universal HD over Coax® cameras .....	8
Universal HD over Coax LPR camera .....	11
Universal HD over Coax PTZ camera .....	11
Star-Light Universal HD over Coax cameras .....	12
Camera accessories .....	14
Network appliances .....	16
Software and mobile apps .....	17
Camera part numbers table .....	17
DW channel partner program (CPP) .....	18
DW University online product certification.....	19




Command . Control . Communicate

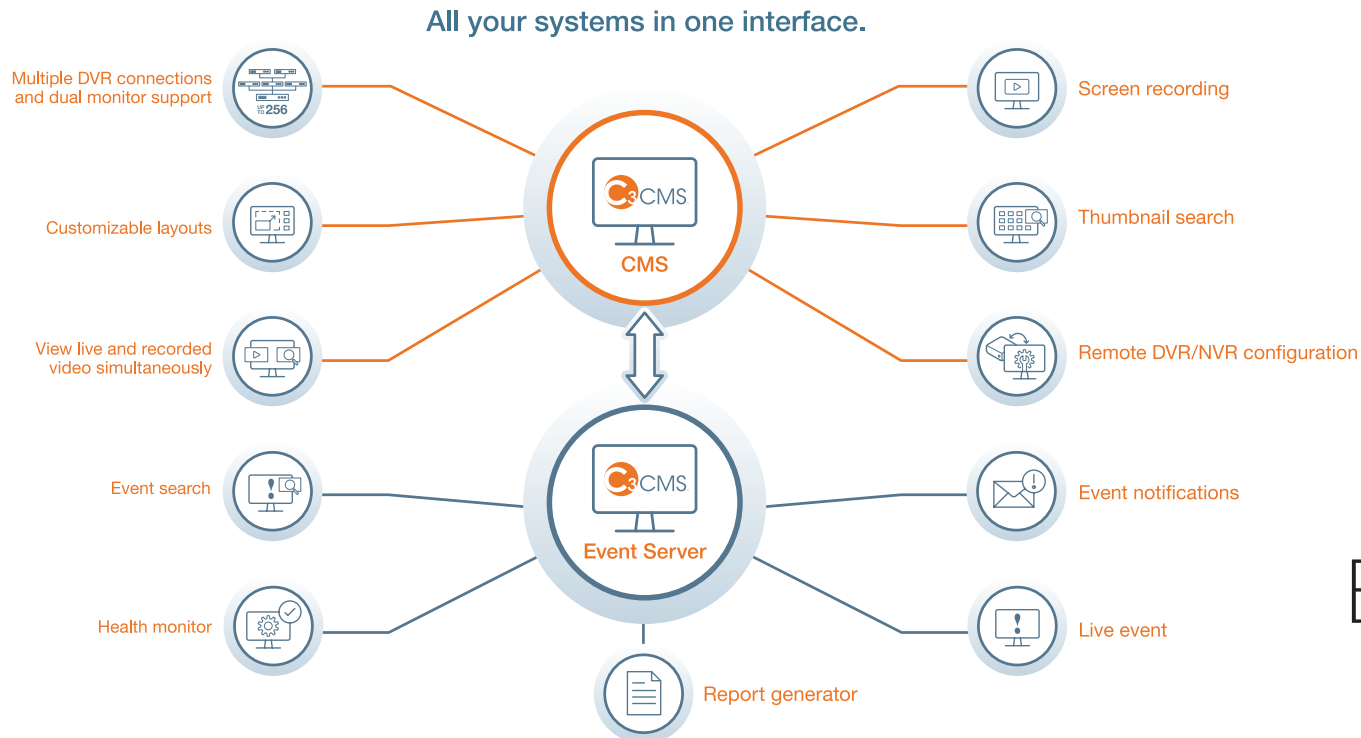
## All your systems in one interface.

The C3 is a remote management software suite for the VMAX series (VMAX A1 Plus, VMAX A1 G4, VMAX IP Plus and VMAX IP G4) recording solutions and provides a powerful and easy-to-use way to monitor the device from anywhere. The software delivers simultaneous live views and playback of recorded video and supports hundreds of devices simultaneously. C3 CMS provides actionable information in real-time.



Manage and monitor your system from anywhere.

SUPPORTED OPERATING SYSTEM:  Windows®  MacOS



Built  
for  
Users.™

# Remote management and event server software



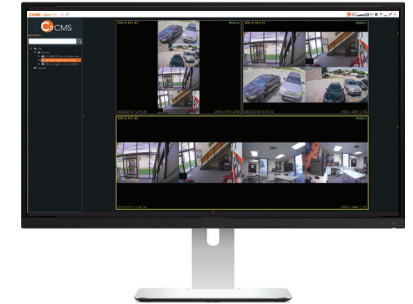
## Multiple DVR connections and dual monitor support.

Monitor live and recorded data from up to 256 sites simultaneously. Use up to 2 monitors simultaneously for an unparalleled 288 total cameras at the same time.



## Customizable layouts.

The C3 CMS supports customizable layouts, from conventional gridline layouts, to user-friendly panoramic, corridor or 2x2 views.



## Screen recording.

C3 CMS allows you to record your own screen.



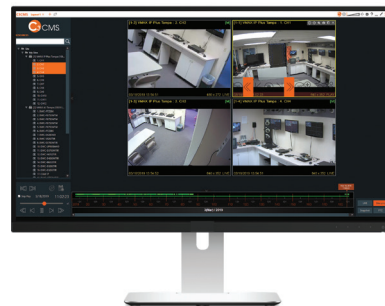
## Thumbnail search.

Find video fast by clicking on thumbnails by the date, hour and minute.



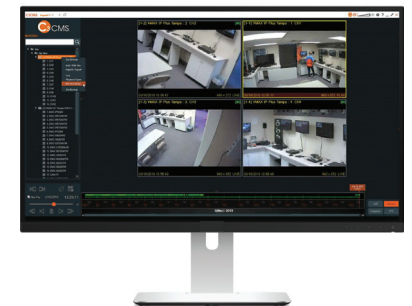
## View live and recorded video simultaneously.

Playback recorded video while watching live view on the same screen at the same time.



## Remote DVR configuration.

Remotely configure DVR settings and firmware upgrades.



# Digital video recorders



Built  
for  
Users.<sup>™</sup>  
**NDAA/TAA**  
COMPLIANT PRODUCT

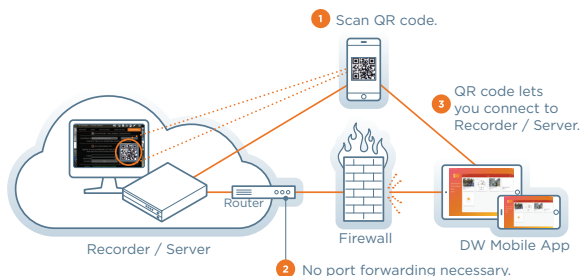
VMAX A1 G4 DVRs support HD-Analog and HD-TVI signals up to 4K\*, and CVBS up to 960H.

The NDAA/TAA compliant DVRs offer a seamless upgrade to HD resolution for new ROI from existing coaxial infrastructure. The VMAX A1 G4 can record 4K\* video and 2.1MP/1080p at real-time 30fps. Up the Coax (UTC) remote configuration is available with all compatible cameras. The VMAX A1 G4 DVRs are available in 4-, 8- and 16-channel models with up to 32TB of storage.



## PathFinder<sup>™</sup> auto port-forwarding.

Easy and secure peer-to-peer (P2P) remote connection without opening ports.



## C3 CMS.

C3 CMS takes video management to the next level. You are in complete command to control all your video surveillance systems in one intuitive interface. Easy-to-program alerts let you take action in real-time and manage the health of your devices.



## Features:

- Universal HD over Coax<sup>®</sup> DVR records HD-Analog, HD-TVI and standard coax up to 4K resolution
- Advanced H.265/H.264 Linux<sup>®</sup> embedded DVR
- 2.1MP/1080p real-time 30fps recording
- Up to 4K recording resolution at 7fps per channel (8- and 16-channel models)
- myDW<sup>®</sup> Cloud Management Services
- Event camera group recording
- Complete system analysis with real-time system and network status monitoring
- OSD and PTZ control via coax (UTC)
- Signal hybrid detects the camera signal automatically
- Up to 32TB internal storage
- Instant channel swap, no need to disconnect or reboot the DVR
- Mobile Application for iOS<sup>®</sup> and Android<sup>®</sup> devices and Apple TV<sup>®</sup>
- Snapshot Notify<sup>™</sup>: programmable interval snapshot email notifications
- 4K (3840 x 2160) True HD, VGA and Spot video outputs
- HDD calculation and auto-recording configuration
- Thumbnail search with hour and 1-minute previews
- 10-second jump buttons for playback and fast forward
- Event notifications via email, C3 CMS and push notifications
- Compatible with DW<sup>®</sup> Spot<sup>™</sup> Monitoring module for Public Views
- 8 audio inputs, 1 audio output
- 16 sensor inputs, 4 relay outputs
- Simple and free DDNS service
- Easy web-based client with multi-user access
- Help menu on major functions
- Auto and manual firmware upgrades
- NDAA compliant
- TAA compliant
- 5 year limited warranty



Universal HD  
over Coax<sup>®</sup>



16 CH  
480 Total fps



4K  
Up to 4K  
Recording



PathFinder<sup>™</sup>



4K  
Ultra HD  
Output



5 YEAR  
Limited Warranty

\* See data sheets for specifications per product.



PART NUMBER		DW-VA1G44xT	DW-VA1G48xT	DW-VA1G416xT
Signals supported		Analog signal up to 960H, HD-Analog and HD-TVI up to 5MP		Standard analog signal up to 960H, HD-Analog and HD-TVI up to 4K
Input video		4 channels		16 channels
Video live	Frame rate	1-30fps, max 120fps total		1-30fps, max 480fps total
Video output		True HD: 3840x2160 (4K), 2560x1440, 1920x1080, 1280x1024, 1024x768, 800x600 VGA: 1920x1080, 1280x1024, 1024x768, 800x600 Spot (CVBS): D1 (720x480) RTSP streaming		
Audio	Input	4 inputs		8 inputs
	Output	1 output		1 output
Alarm	Alarm input	4 inputs		16 inputs
	Alarm output	1 output		4 outputs
Operating system		Embedded Linux*		
Recording	Recording frame rate	---	4K (3840x2160): 56fps (7fps per channel)	4K (3840x2160): 112fps (7fps per channel)
		5MP (2560x1944): 48fps (12fps per channel)	5MP (2560x1944): 96fps (12fps per channel)	5MP (2560x1944): 192fps (12fps per channel)
		4MP/2K (2560x1440): 60fps (15fps per channel)	4MP/2K (2560x1440): 120fps (15fps per channel)	4MP/2K (2560x1440): 240fps (15fps per channel)
		3MP (1920x1536): 72fps (18fps per channel)	3MP (1920x1536): 144fps (18fps per channel)	3MP (1920x1536): 288fps (18fps per channel)
	Full HD-D1 (1920x1080, 1280x720, 720x480, 960x480): 120fps (30fps per channel)	Full HD-D1 (1920x1080, 1280x720, 720x480, 960x480): 240fps (30fps per channel)	Full HD-D1 (1920x1080, 1280x720, 720x480, 960x480): 480fps (30fps per channel)	
Recording resolutions		Analog signal up to 960H, HD-Analog and HD-TVI up to 5MP		Standard analog signal up to 960H, HD-Analog and HD-TVI up to 4K
Storage	HDD interface	1x SATA HDD		2x SATA HDD
	Max. internal storage	Up to 16TB		Up to 32TB
Access	Web viewer	Live, playback and configuration up to 10 multiple connections		
	Mobile client	Mobile app for Apple and Android smart phones and tablets		
	Client monitoring software	Mac® (Apple® S/W), C3™ (CMS S/W)		
Operating temperature		41°F - 104°F (5°C - 40°C)		
Electrical	Power requirement	DC12V		
	Power consumption	24W, 2A		48W, 4A
Dimensions		11.81" x 9.8" x 1.77" (300 x 249 x 45 mm)		14.96" x 10.58" x 1.77" (380 x 268.8 x 45 mm)



# Universal HD over Coax



Color in Darkness Universal HD over Coax® cameras



**NDAA**  
COMPLIANT PRODUCT

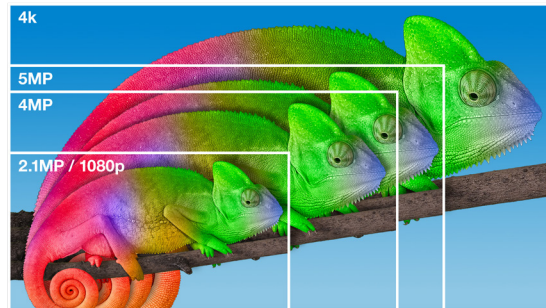
Color in darkness images and support for HD-Analog, HD-TVI and HD-CVI signals.

All DW Universal HD over Coax cameras include color in darkness technology. They are engineered to work with our VMAX A1 Plus Universal HD over Coax DVRs, using your existing coaxial infrastructure for a cost effective, high resolution surveillance solution.



## Megapixel resolution.

DW's technology delivers crystal-clear images in resolutions up to 4K over coaxial infrastructure. Higher resolution delivers forensic details when zooming into the camera's field of view.



## Star-Light Plus color in darkness technology.

Star-Light Plus color in near-total darkness technology provides crisp, clear color images in near-total darkness. The camera's sensor offers back-illuminated pixel technology featuring increased light sensitivity. The result is a high-quality color picture in the visible light and near infrared light.



Star-Light Plus™ monochrome images in near-total darkness.



Star-Light Plus™ delivers color image details in near-total darkness.

## Features:



- Universal HD over Coax technology with HD-Analog, HD-TVI and HD-CVI signal support
- Star-Light Plus color in near-total darkness technology
- 4K @ 15 fps, 4MP/1440p @ 30 fps, 2.1MP/1080p @ 30 fps\*
- 5MP at 20fps, 4MP at real-time 30fps\*
- Built-in microphone\*
- Fixed lens, vari-focal p-iris lens and motorized zoom with auto-focus lens options

- True wide dynamic range (WDR)
- OSD control via Coaxial (UTC)
- CleanView™ hydrophobic dome coating repels water, dust and grease\*
- 70'-150' Smart IR™ with intelligent camera sync\*
- Smart DNR™ 3D digital noise reduction
- True day/night mechanical IR cut filter
- De-Fog extreme weather image compensation
- Auto sensing 24VAC/12VDC\*
- Programmable privacy zones

- Easy icon driven OSD menu with built-in joystick
- Auto gain control (AGC)
- Backlight compensation (BLC)
- Auto white balance (AWB)
- Relay output\*
- NDAA compliant
- IP66/67-rated housing options\*
- IK9/IK10-rated impact-resistant\*
- 5 year warranty

\* See data sheets for specifications per camera.

### 4K cameras

**NDA A**  
COMPLIANT PRODUCT



PART NUMBER		DWC-B6883WTIRW	DWC-B6853WTIRW	DWC-V6863WTIRW	DWC-D3853WTIRW	DWC-D3863WTIRW	DWC-D4883WTIRW	DWC-VA883WTIR	DWC-VA853WTIR	
Image	Image sensor	4K 1/1.8" CMOS								
	Signal technology	Universal HD over Coax technology with HD-Analog, HD-TVI, HD-CVI to 4K and CVBS at 960H								
	Effective pixels	3864(H) x 2176(V)	3864(H) x 2176(V)	3864(H) x 2176(V)	3864(H) x 2176(V)	3864(H) x 2176(V)	3864(H) x 2176(V)	3864(H) x 2176(V)	3864(H) x 2176(V)	
	Minimum scene illumination	0.09 lux (color)	0.1 lux (color)	0.1 lux (color)	0.1 lux (color)	0.1 lux (color)	0.1 lux (color)	0.09 lux (color)	0.09 lux (color)	0.1 lux (color)
		0 lux (B/W)	0 lux (B/W)	0 lux (B/W)	0 lux (B/W)	0 lux (B/W)	0 lux (B/W)	0 lux (B/W)	0 lux (B/W)	0 lux (B/W)
Video output	4K @ 15 fps 4MP/1440p @ 30 fps, 2.1MP/1080p @ 30 fps									
Lens	Focal length	3.6 - 10mm	2.8mm	3.6 - 10mm	2.8mm	3.6 - 10mm	3.6 - 10mm	3.6 - 10mm	2.8mm	
	Lens type	Vari-focal p-iris lens with motorized zoom and auto-focus	Fixed lens	Vari-focal p-iris lens	Fixed lens	Vari-focal p-iris lens	Vari-focal p-iris lens with motorized zoom and auto-focus	Vari-focal p-iris lens with motorized zoom and auto-focus	Fixed lens	
	IR distance	150ft range	100ft range	100ft range	100ft range	100ft range	70ft range	80ft range	70ft range	
Operational	Digital noise reduction (DNR)	Smart DNR™ 3D digital noise reduction								
	Backlight compensation (BLC)	Yes								
	Wide dynamic range (WDR)	Double shutter WDR								
	Day and night	Auto, day (color), night (B/W)								
	Privacy zones	Yes								
	De-Fog™	Yes								
	RS485 / UTP built-in	UTC								
	Alarm output	---	---	---	---	---	---	---	---	
Housing	Bullet	Bullet	Vandal dome	Indoor dome	Indoor dome	Snapit indoor dome	Vandal ball	Vandal ball		
Environmental	Operating temperature	-4°F - 122°F (-20°C - 50°C)								
	CleanView™	---	---	Yes	---	---	---	---	---	
	IP rating	IP66-rated	IP66-rated	IP66-rated	---	---	---	IP67-rated	IP67-rated	
	IK rating	---	---	IK10-rated impact resistant	---	---	---	---	IK10-rated impact resistant	
	Other certifications	UL listed, FCC, CE, ROHS, NDA A compliant				FCC, CE, ROHS, NDA A compliant				
Electrical	Power requirements	DC12V/AC24V dual voltage	DC12V	DC12V/AC24V dual-voltage	DC12V	DC12V/AC24V dual-voltage			DC12V	
	Power consumption	DC12V (LED off): 5.49W, 457mA DC12V (LED on): 8.34W, 692mA	DC12V (LED off): 3W, 250mA DC12V (LED on): 4.2W, 352mA	DC12V (LED off): 4.27W, 356mA DC12V (LED on): 6.98W, 582mA	DC12V (LED off): 3W, 250mA DC12V (LED on): 4.04W, 337mA	DC12V (LED off): 4.27W, 356mA DC12V (LED on): 6.98W, 582mA	DC12V (LED off): 5.76W, 480mA DC12V (LED on): 7.92W, 660mA	DC12V (LED off): 5.517W, 460mA DC12V (LED on): 8.98W, 748mA	DC12V (LED off): 3W, 250mA DC12V (LED on): 4.54W, 378mA	
		AC24V (LED off): 4.95W, 346mA AC24V (LED on): 7.81W, 540mA		AC24V (LED off): 3.96W, 290mA AC24V (LED on): 6.38W, 440mA		AC24V (LED off): 3.96W, 290mA AC24V (LED on): 6.38W, 440mA	AC24V (LED off): 6.49W, 429mA AC24V (LED on): 7.15W, 495mA	AC24V (LED off): 5.06W, 358mA AC24V (LED on): 8.03W, 552mA		
	Dimensions	9.92" x 3.8"	8.83" x 3.8"	5.7" x 4.26"	4.72" x 3.51"	4.72" x 3.51"	4.24" x 3.9"	4.92" x 4.8"	4.92" x 4.05"	

# Universal HD over Coax

## 5MP cameras

**NDA A**  
COMPLIANT PRODUCT



PART NUMBER		DWC-VA583WTIR	DWC-VA553WTIR	DWC-B6563WTIRW	DWC-B6563WTR650W	DWC-V6563WTIR	DWC-B7553WTIRW
Image	Image sensor	5MP 1/2.8" Star-Light Plus™ sensor					
	Signal technology	Universal HD over Coax technology with HD-Analog, HD-TVI and HD-CVI signal support					
	Effective pixels	2608 (H) x 1960 (V)	2608 (H) x 1960 (V)	2608 (H) x 1960 (V)	2608 (H) x 1960 (V)	2608 (H) x 1960 (V)	2608 (H) x 1960 (V)
	Minimum scene illumination	0.08 lux (color)	0.16 lux (color)	0.08 lux (color)	0.1 lux (color)	0.08 lux (color)	0.16 lux (color)
		0 lux (B/W)	0 lux (B/W)	0 lux (B/W)	0 lux (B/W)	0 lux (B/W)	0 lux (B/W)
Video output	5MP (1944p): 20fps (HD-Analog and HD-TVI only) 4MP (1440p): 30fps						
Lens	Focal length	2.7 - 13.5mm	4.0mm	2.7 - 13.5mm	6.0 - 50mm	2.7 - 13.5mm	4.0mm
	Lens type	Varifocal p-iris lens with motorized zoom and auto-focus	Fixed	Vari-focal with p-iris lens	Vari-focal with p-iris lens	Vari-focal with P-Iris lens	Fixed
	IR distance	80ft range	70ft range	100ft range	150ft range	100ft range	70ft range
Operational	Digital noise reduction (DNR)	Smart DNR™ 3D digital noise reduction					
	Backlight compensation (BLC)	Yes	Yes	Yes	Yes	Yes	Yes
	Wide dynamic range (WDR)	True WDR	True WDR	True WDR	True WDR	True WDR	True WDR
	Day and night	True D/N	True D/N	True D/N	True D/N	True D/N	True D/N
	Privacy zones	Yes	Yes	Yes	Yes	Yes	Yes
	De-Fog™	---	---	---	---	---	---
	RS485 / UTP built-in / UTC	UTC	UTC	PELCO D / UTC / UTP built-in	PELCO D / UTC / UTP built-in	PELCO D / UTC / UTP built-in	UTC
	Alarm output	---	---	1 alarm output	1 alarm output	1 alarm output	---
Housing	Vandal outdoor ball	Vandal outdoor ball	Outdoor vandal bullet	Outdoor vandal bullet	Vandal dome	Outdoor vandal bullet	
Environmental	Operating temperature	-4°F - 122°F (-20°C - 50°C)	-4°F - 122°F (-20°C - 50°C)	-4°F - 122°F (-20°C - 50°C)	-4°F - 122°F (-20°C - 50°C)	-4°F - 122°F (-20°C - 50°C)	-4°F - 122°F (-20°C - 50°C)
	CleanView™	---	---	---	---	Yes	---
	IP rating	IP67-rated	IP67-rated	IP66-rated	IP66-rated	IP66-rated	IP66-rated
	IK rating	IK 10-rated impact-resistant		---	---	IK 10-rated impact-resistant	---
	Other certifications	FCC, CE, ROHS, NDA A compliant		UL listed, FCC, CE, ROHS, NDA A compliant			FCC, CE, ROHS, NDA A compliant
Electrical	Power requirements	DC12V/AC24V dual voltage	DC 12V	DC12V/AC24V dual voltage	DC12V/AC24V dual voltage	DC12V/AC24V dual voltage	DC12V
	Power consumption	DC12V (LED off): 4.36W, 363mA DC12V (LED on): 7.6W, 638mA AC24V (LED off): 4.5W, 278mA AC24V (LED on): 6.27W, 456mA	DC12V (LED off): 1.89W, 157mA DC12V (LED on): 4.26W, 355mA	DC12V (LED off): 3.3W, 275mA DC12V (LED on): 5W, 420mA AC24V (LED off): 2.86W, 119mA AC24V (LED on): 4.4W, 183mA	DC12V (LED off): 3.3W, 275mA DC12V (LED on): 6.2W, 531mA AC24V (LED off): 2.86W, 220mA AC24V (LED on): 5.6W, 390mA	DC12V (LED off): 3.3W, 275mA DC12V (LED on): 5.9W, 495mA AC24V (LED off): 2.75W, 200mA AC24V (LED on): 5.3W, 360mA	DC12V (LED off): 2W, 176mA DC12V (LED on): 3.9W, 333mA
		Dimensions	5.7" x 4.26"	5.7" x 4.26"	8.83" x 3.81"	9.92" x 3.8"	5.7" x 4.26"

5MP cameras

LPR camera

PTZ camera



NDA/TAA COMPLIANT PRODUCT

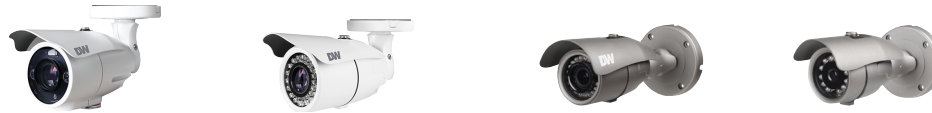
DWC-D3563WTIR		DWC-D4583WTIR		DWC-MC553WTIR		DWC-V7553WTIR		DWC-V7553W		DWC-LPR650UW		DWC-PTZ220XW	
5MP 1/2.8" Star-Light Plus™ sensor										2.1MP/1080p 1/3" CMOS		2.1MP/1080p 1/2.8" Star-Light Plus™ CMOS	
Universal HD over Coax® technology with HD-Analog, HD-TVI and HD-CVI signal support												HD-analog, HD-TVI and CVBS	
2608 (H) x 1960 (V)										1937(H) x 1097(V)		1945(H)x1097(V)	
0.08 lux (color)		0.08 lux (color)		0.16 lux (color)		0.13 (color)		---		0.35 lux (color)			
0 lux (B/W)		0 lux (B/W)		0 lux (B/W)				0 lux (B/W)		0.013 lux (B/W)			
5MP (1944p): 20fps (HD-Analog and HD-TVI only) 4MP (1440p): 30fps										2.1MP/1080p at 30fps		2.1MP/1080p at 30fps	
2.7 - 13.5mm		2.7 - 13.5mm		4.0mm		4.0mm		2.8mm		6 - 50mm		4.7 - 94mm	
Vari-focal with P-Iris lens		Vari-focal p-iris lens with motorized zoom and auto-focus		Fixed lens		Fixed lens		Fixed lens		Vari-focal p-iris lens		Vari-focal with remote auto-focus lens	
100ft range		70ft range		50ft range		50ft range		---		115ft range		---	
Smart DNR™ 3D digital noise reduction													
Yes		Yes		Yes						---		Yes	
True WDR													
True D/N													
Yes													
16 privacy masks													
16 privacy masks													
---		---		---		---		---		Yes		Yes	
PELCO D / UTC		PELCO D / UTC		---		UTC		---		Yes		UTC, RS485	
1 alarm output		1 alarm output		---		---		---		1 alarm output		4 input/ 1 output	
Indoor dome		SnapIt™ indoor dome		Micro dome		Ultra low-profile vandal dome		---		Outdoor vandal bullet		PTZ high speed dome	
-4°F - 122°F (-20°C - 50°C)										-4°F - 122°F (-20°C - 50°C)			
---		---		---		---		---		---		---	
IP66-rated													
IP66-rated													
---		---		IK 09-rated impact-resistant		IK 10-rated impact-resistant		---		---		IK 10-rated impact-resistant	
CE, FCC, ROHS, NDA compliant						UL listed, CE, FCC, ROHS, NDA compliant				CE, FCC, ROHS, NDA compliant		CE, FCC, ROHS, NDA & TAA compliant	
DC12V/AC24V dual voltage		DC12V/AC24V dual voltage		DC12V		DC12V		DC12V		DC12V/AC24V Dual Voltage		DC12V/AC24V Dual Voltage	
DC12V (LED off): 3.3W, 275mA DC12V (LED on): 5.9W, 495mA		DC12V (LED off): 4.62W, 385mA DC12V (LED on): 7.13W, 595mA		DC12V (LED off): 1.98W, 165mA DC12V (LED on): 2.62W, 218mA		DC12V (LED off): 2W, 176mA DC12V (LED on): 2.69W, 224mA		DC12V: 2W, 176mA		DC12V: 6.12W, 510mA, AC24V: 5.7W, 475mA		Auto focus working: max. 12W, 1A	
AC24V (LED off): 2.75W, 200mA AC24V (LED on): 5.3W , 360mA		AC24V (LED off): 3.96W, 280mA AC24V (LED on): 6.5W , 410mA											
4.72" x 3.52"		4.24" x 3.9"		3.14" x 2.34"		4.13" x 2.38"		4.13" x 2.38"		9.4" x 3.81"		6.06" x 5.9"	

\* Chrome, black and white trim rings included. Color trim rings are sold separately.

# Universal HD over Coax

**NDA A**  
COMPLIANT PRODUCT

## Universal HD over Coax cameras



## SnapIt™ cameras



PART NUMBER		DWC-B6263WTIR	DWC-B6263WTIR650	DWC-B6263TIR	DWC-B7753TIR	DWC-D4283WD / DWC-V4283WD	DWC-D4283WTIR / DWC-V4283WTIR
Image	Image sensor	2.1MP/1080p 1/3" CMOS					
	Signal technology	HD-analog, HD-TVI, HD-CVI and CVBS					
	Effective pixels	1944(H) x 1092(V)		1920(H) x 1080(V)		1944(H) x 1092(V)	
	Minimum scene illumination	0.03 lux (color)	0.39 lux (color)	0.2 lux (color)	0.41 lux (color)	0.3 lux (color)	0.3 lux (color)
		0 lux (B/W)		0 lux (B/W)	0 lux (B/W)	---	0 lux (B/W)
Video output	2.1MP/1080p at 30fps						
Lens	Focal length	2.8 - 12mm	6 - 50mm	2.8 - 12mm	3.6mm	2.8 - 12mm	2.8 - 12mm
	Lens type	Vari-focal p-iris lens		Vari-focal p-iris lens	Fixed lens	Varifocal p-iris lens with motorized zoom and auto-focus	
	IR distance	100ft range	150ft range	100ft range	50ft range	---	100ft range
Operational	Digital noise reduction (DNR)	Smart DNR™ 3D digital noise reduction					
	Backlight compensation (BLC)	Yes					
	Wide dynamic range (WDR)	True WDR		D-WDR		True WDR	
	Day and night	True D/N		True D/N		Electronic D/N	True D/N
	Privacy zones	16 privacy masks		4 privacy masks		16 privacy masks	
	De-Fog	Yes		---		Yes	
	RS485 / UTP built-in / UTC	Yes		---		UTP built-in	
	Alarm output	1 Alarm Output		---		1 alarm output	
Housing	Outdoor vandal bullet		Outdoor vandal bullet		SnapIt™ indoor and outdoor vandal domes		
Environmental	Operating temperature	-4°F - 122°F (-20°C - 50°C)				-40°F - 122°F (-40°C - 50°C)	
	CleanView	---				Yes (DWC-V4283WD)	Yes (DWC-V4283WTIR)
	IP rating	IP66-rated		IP66-rated		IP68-rated (DWC-V4283WD)	IP68-rated (DWC-V4283WTIR)
	IK rating	---				IK 10-rated impact-resistant (DWC-V4283WD, DWC-V4283WTIR)	
	Other certifications	UL listed, CE, FCC, ROHS, NDA A compliant				CE, FCC, ROHS, NDA A compliant	
Electrical	Power requirements	DC12V/AC24V dual voltage		DC12V		DC12V/AC24V dual voltage	
	Power consumption	DC12V (LED off): 3W DC12V (LED on): 4.4W	DC12V (LED off): 3W DC12V (LED on): 6W	DC12V (LED off): 1.86W DC12V (LED on): 3.4W	DC12V (LED off): 1.86W DC12V (LED on): 3.0W	DC12V: 3.0W	DC12V (LED off): 3.0W DC12V (LED on): 5.2W
		AC24V (LED off): 2.7W AC24V (LED on): 4.3W	AC24V (LED off): 2.7W AC24V (LED on): 5.5W			AC24V: 2.3W	AC24V (LED off): 2.3W AC24V (LED on): 4.6W
Dimensions	8.83" x 3.8"	9.92" x 3.8"	8.83" x 3.8"	6.47" x 2.52"	4.24" x 3.9" (DWC-D4283WD) 5.47" x 4.79" (DWC-V4283WD)	4.24" x 3.9" (DWC-D4283WTIR) 5.47" x 4.79" (DWC-V4283WTIR)	

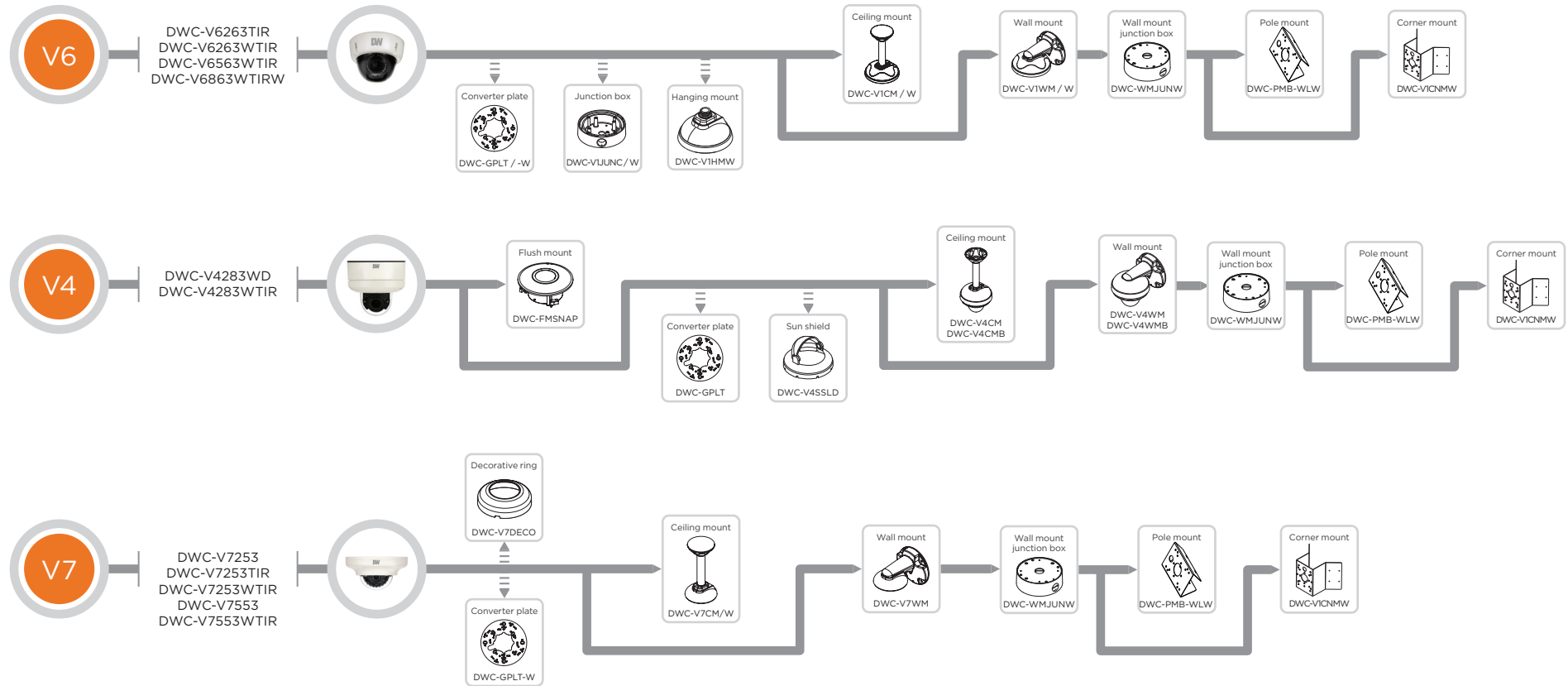
### Universal HD over Coax cameras



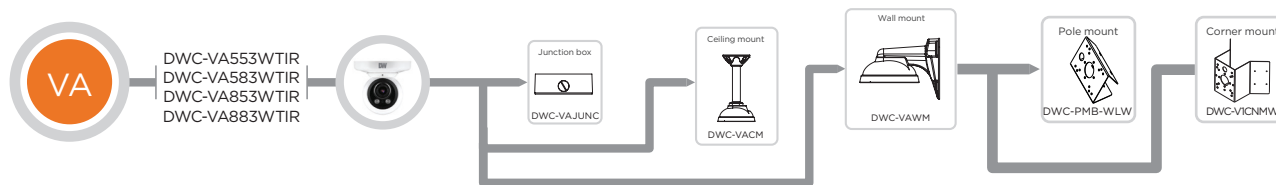
DWC-D3263WTIR	DWC-V6263WTIR	DWC-V7253WTIR	DWC-D3263TIR	DWC-V6263TIR	DWC-V7253 / DWC-V7253TIR
2.1MP/1080p 1/3" CMOS					
HD-analog, HD-TVI, HD-CVI and CVBS					
1944(H) x 1092(V)			1920(H) x 1080(V)		
0.03 lux (color)	0.03 lux (color)	0.06 lux (color)	0.2 lux (color)	0.2 lux (color)	0.2 lux (color)
0 lux (B/W)	0 lux (B/W)	0 lux (B/W)	0 lux (B/W)	0 lux (B/W)	0 lux (B/W) (DWC-V7253TIR)
2.1MP/1080p at 30fps					
2.8 - 12mm	2.8 - 12mm	3.6mm	2.8 - 12mm	2.8 - 12mm	3.6mm
Varifocal p-iris lens	Varifocal p-iris lens	Fixed lens	Varifocal p-iris lens	Varifocal p-iris lens	Fixed lens
100ft range	100ft range	50ft range	100ft range	100ft range	50ft range (DWC-V7253TIR)
Smart DNR™ 3D digital noise reduction					
Yes					
True WDR					
True D/N			D-WDR		
16 privacy masks			4 privacy masks		
Yes	Yes	Yes	---	---	---
UTP built-in	UTP built-in	---	---	---	---
1 alarm output	1 alarm output	---	---	---	---
Indoor dome	Outdoor vandal dome	Ultra low-profile outdoor vandal dome	Indoor dome	Outdoor vandal dome	Ultra low-profile outdoor vandal dome
-4°F - 122°F (-20°C - 50°C)					
---	Yes	---	---	Yes	---
---	IP66-rated		---	IP66-rated	
---	IK 10-rated impact-resistant		---	IK 10-rated impact-resistant	
FCC, CE, ROHS, NDAA compliant	UL listed, FCC, CE, ROHS, NDAA compliant		FCC, CE, ROHS, NDAA compliant	UL listed, FCC, CE, ROHS, NDAA compliant	
DC12V/AC24V dual voltage	DC12V/AC24V dual voltage	DC12V			
DC12V (LED off): 2.94W DC12V (LED on): 5.22W AC24V (LED off): 2.5W AC24V (LED on): 4.35W	DC12V (LED off): 2.94W DC12V (LED on): 5.22W AC24V (LED off): 2.5W AC24V (LED on): 4.35W	DC12V(LED OFF): 1.7W DC12V(LED ON): 2.9W	DC12V (LED off) : 186W DC12V (LED on) : 3.6W	DC12V (LED off) : 186W DC12V (LED on) : 3.6W	DC12V (LED off) : 1.92W DC12V (LED on) : 3.12W (DWC-V7253TIR)
4.72" x 3.52"	5.7" x 4.26"	4.13" x 2.39"	4.72" x 3.52"	5.7" x 4.26"	4.13" x 2.39"

# Camera accessories

## Outdoor dome cameras

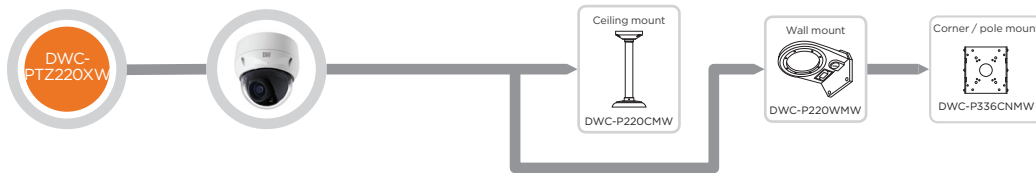


## Vandal ball cameras

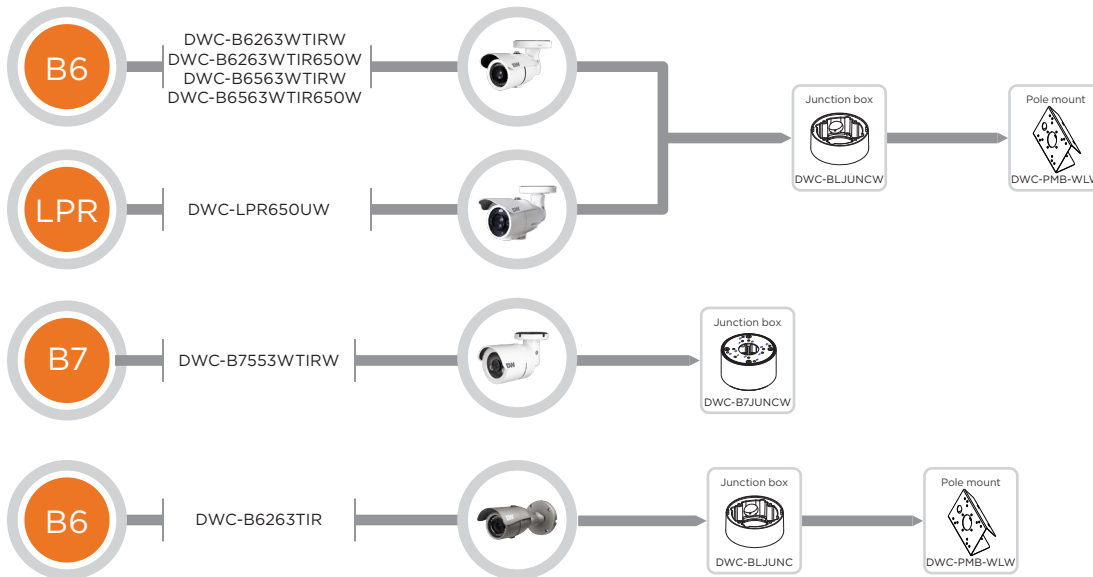


# Camera accessories

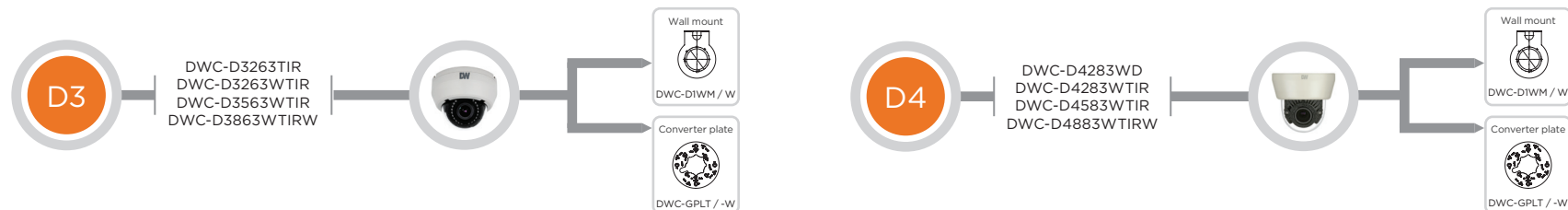
## Pan, Tilt, Zoom dome cameras



## Bullet cameras



## Indoor dome cameras







The easiest transition from analog to IP.



SPECIFICATIONS	DW-ENHD16
Video input	16 HD over Coax technology with HD-Analog, HD-TVI and CVBS analog signal up to 2.1MP/1080p
Video output	16 IP channels
Local display	True HD/VGA: 1/4/9/16 Split, PIP, Sequence Spot: 1/16 Split, Sequence
Resolution	Main stream: 240fps @ 2.1MP/1080p Sub Stream: 240fps @ VGA
Video encoding	H.264
AUDIO	
Input	4 audio input
Output	1 RCA audio output, 1 HD audio output
INTERFACE	
Alarm input	4 inputs
Alarm output	1 output
RS-232	---
RS-485	2x RS485, 3x USB, UTC PTZ control via Coax (HD-Analog, HD-TVI)
GENERAL	
ONVIF Conformant	Yes, profile S
Power requirements	DC12V (2A)
Power consumption	Max. 14.4W
Dimensions	14.76" x 1.76" x 12.52"
Rack-mountable	DW-EN19RE (included)



Place a public view monitor anywhere.



SPECIFICATIONS	DW-HDSPOTMOD	DW-HDSPOTMOD16
Operating system	Embedded Linux	
IP camera	Input: 4 channels	16 channels
Display	Speed: Up to 120fps	Up to 480fps
	Screen mode: Single channel, quad view mode, sequence	Single channel, 16-Ch view mode, sequence
Video-in	IP cameras (up to 4K, 3840 x 2160 resolution), Universal HD over Coax* VMAX* AT™ DVRs or VMAX* IP Plus™ NVRs	
Video-out	Monitor	True HD and/or VGA
	Resolution	True HD: 3840x2160, 1920x1080, 1280x720, 1024x768 VGA: 1920x1080, 1280x720, 1024x768
Network function	Time synchronization by NTP server	
System recovery after power failure	Auto-reboot and log file system	
Advanced functions	Firmware upgrade by USB and CMS	
	Import and export settings	
System operation	Digital zoom	
	USB mouse	
ENVIRONMENTAL		
Power	DC12V, 1A	
Operating temperature	41°F - 104°F (5°C - 40°C)	
Dimensions	5.47" x 4.84" x 1.25"	



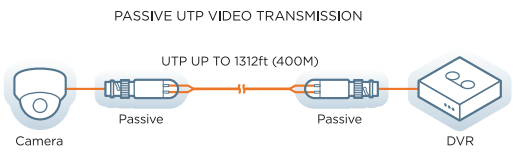
Built for Users™



Use for any CAT5E application. Use a single pair of cables to pass through all HD-Analog, HD-TVI and HD-CVI signals up to 4K and CVBS signals up to 960H passively up to 1312ft in full color.






### Connection Options



SPECIFICATIONS	
Transmission signal	1 channel
Transmission distance	<ul style="list-style-type: none"> <li>• HD-CVI 720p: 1312ft (400M)</li> <li>• HD-CVI 2.1MP/1080p: 820ft (250M)</li> <li>• HD-CVI 4MP/4K: 656ft (200M)</li> <li>• HD-TVI 720p: 820ft (250M)</li> <li>• HD-TVI 2.1MP/1080p: 820ft (250M)</li> <li>• HD-TVI 5MP/4K: 590ft (180M)</li> <li>• HD-Analog 720p: 1148ft (350M)</li> <li>• HD-Analog 2.1MP/1080p: 656ft (200M)</li> <li>• HD-Analog 5MP/4K: 590ft (180M)</li> </ul>
Category type	UTP CAT5 / 5E / 6
VIDEO TRANSMISSION PROPERTIES AND PORT	
Coaxial video connector	BNC-M
ENVIRONMENTAL	
Operating temperature	14 - 131° F (-10 - 55° C)
Operating humidity	0-95% (non-condensing)
MECHANICAL	
Dimensions (L*W*H)	2.16" x 0.63" x 0.75"
Weight	0.049 lbs

# Software and Apps to manage your system remotely

			
<b>Software:</b>	<b>C3 CMS and Event Server</b>	<b>DW Mobile Plus™ app</b>	<b>DW Site Viewer™ for Apple TV</b>
<b>Recorders:</b>	<b>Windows and Mac</b>	<b>iOS and Android</b>	<b>Apple TV</b>
<b>VMAX® A1 Plus™</b>	○	○	○

## Camera part numbering system

### Analog Camera

Model	Type	Case	Technology	Lens	Sensor	WDR	TDN	IR	Color
DWC-: DW Camera	D: Indoor dome V: Vandal dome B: Bullet T: Turret C: Box MC: Micro PB: Pano bullet VA: vandal ball	Internal use	2: UHDoC 2MP 3: High resolution 4: UHDoC 4MP 5: 960H / UHDoC 5MP 7: AHD 8: UHDoC 8MP	5: Fixed 6: Vari-focal 8: Auto-focus	1: CMOS 2: CCD 3: Star-Light™	W: True WDR D: Digital WDR	T: True D/N D: Electric D/N	IR	W: White
DWC-	V	4	7	8	3	W	T	IR	

Example 1: DWC-V4783WTIR = Vandal dome HD-Analog camera with auto-focus lens, Star-Light sensor, WDR, True D/N and IR.

# Support and resources ensure success



Exceptional pricing and service for our best customers.

The DW Channel Partner Program is dedicated to those who sell the complete line of Digital Watchdog surveillance solutions.



See program details for qualifications and inclusions.

## What's in it for me?

With your annual purchase commitment, you receive:

- ✓ Enhanced margins
- ✓ Project pricing / Map pricing
- ✓ Project design support
- ✓ Demo support and equipment pricing
- ✓ Pre- and post-sales support
- ✓ Sales lead allocation
- ✓ Extended warranties
- ✓ Advanced replacement & repair request
- ✓ DW University professional certification
- ✓ Product & technical training online (LMS)
- ✓ New product announcements
- ✓ Partner portal access
- ✓ Co-marketing materials
- ✓ Case Study support
- ✓ Enhanced technical support
- ✓ Registered project technical support
- ✓ Technical knowledgebase

[portal.digital-watchdog.com](http://portal.digital-watchdog.com)

## Your online home for deep learning.

DW has developed DW University Online, a self-paced learning environment where you can earn product certification when it meets your schedule— anytime, on demand training.

Registration is free. An annual subscription gives you unlimited access to all courses.

DW Spectrum's training program has three learning components:



### Video Modules:

Each module focuses on a significant subject, available for viewing or download.



### DW Spectrum Training Lab:

Training lab scenarios reinforce the skills you have learned in each video module.



### DW Spectrum Exam:

When you pass the final exam, you will be certified on DW Spectrum®.

### Key features:

- ✓ Mobile-friendly
- ✓ Self-paced
- ✓ Collaborative tools and activities
- ✓ Up to date and immediate
- ✓ Modern and easy to use
- ✓ Cost-effective
- ✓ Unlimited access
- ✓ Built-in quizzes and exams
- ✓ Certificate of completion provided
- ✓ Engaging user experience
- ✓ Notifications and messaging
- ✓ Track your progress online

<https://dwuniversity.digital-watchdog.com>

