

## WHITE LIGHT AND IR LED ILLUMINATORS

DW-ILWLIPM	DW-ILIRIP940	DW-ILIRIP850
------------	--------------	--------------



### WHAT'S IN THE BOX

- 1x Illuminator
- 1x waterproof cap
- 1x mount bracket
- 2x M6 screw and washer sets for bracket
- 1x allen key
- 1x front cover opener
- 1x diffuser pack (20°, 30°, 60°, 80°, 95°)
- 1x quick setup guide

**NOTE:** Download all your support materials and tools in one place.

- Go to: <http://www.digital-watchdog.com/resources>.
- Search for your product by entering the part number in the 'Search by Product' search bar. Results for applicable part numbers will populate automatically based on the part number you enter.
- Click 'Search'. All supported materials, including manuals and quick start guide (QSGs) will appear in the results.



**Attention:** This document is intended to serve as a quick reference for initial setup. It is recommended that the user read the entire instruction manual for complete and proper installation and usage.

## STEP 1 - INSTALLATION

**NOTE:**

- Only to be installed outside of arms reach.
- Installation should be done by skilled personnel or under supervision of such personnel.
- The illuminator is PoE+.
- Only to be installed in restricted access areas.
- Terminal block not included. Installation may require advice from a qualified person.

Optimum results are achieved by setting up at night and viewing the results on a monitor.

1. Attach the illuminator mount to wall or camera housing using appropriate hardware.
2. Select a diffuser with an appropriate angle based on your installation needs. To position the required diffuser sheet, using the supplied pry tool, insert into the slot located on the bottom of the lens. Gently lift the cover upwards slowly. Repeat at opposite end and carefully remove cover. Remove backing sheet from the two adhesive disc and secure required diffuser in position. Finally, firmly clip the lens cover back into place.



3. Adjust the angle of the illuminator to match the camera's field of view.
4. Adjust the vertical alignment by loosening the side bolts (one on each side of the main body) to maximize the results.
5. Tilt the lamp downwards until the desired field of view is illuminated.

## STEP 2 - CABLING THE ILLUMINATOR

Connect to PoE+ switch or PoE+ injector for power and network connection.

Power requirements	Power consumption
PoE+ (IEEE802.3at)	25W

**NOTE:** Illuminator will flash once every second when insufficient power is applied.

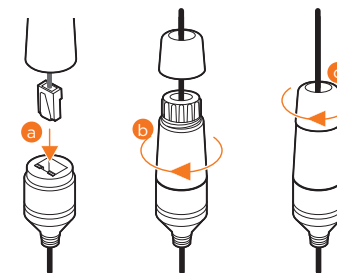
Illuminators are powered by Power over the Ethernet (PoE+) via a network cable connector to a PoE IEEE802at compliant switch. The power consumption of the illuminators complies with PoE+ IEEE802at.

These illuminators are not supplied with a power cord. Instead, they are supplied with a 3.28ft (1m) long network cable. At the end of the network cable is a female RJ45 Cat5e compliant jack with an IP68 rated cover.

To use the illuminator's water proof wiring:

- a. Install the LAN cable into **a**.
- b. **b** will be assembled to **a** with a 1/4 turn.
- c. Thread **c** tightly to **b**.

**NOTE:** To ensure moisture seal, make sure the o-ring is in place between **a** and **b**. In extreme environments use of an outdoor rated sealer is recommended.



**NOTE:** When using the waterproof cap, crimp the RJ45 connector after passing the cable through the waterproof cap.

**NOTE:** Ensure that the IP68-rated cover is correctly fitted and attached to the network cable. If this is not fitted correctly, moisture can get into the connector and may cause the unit to malfunction. This would void the warranty on the product.

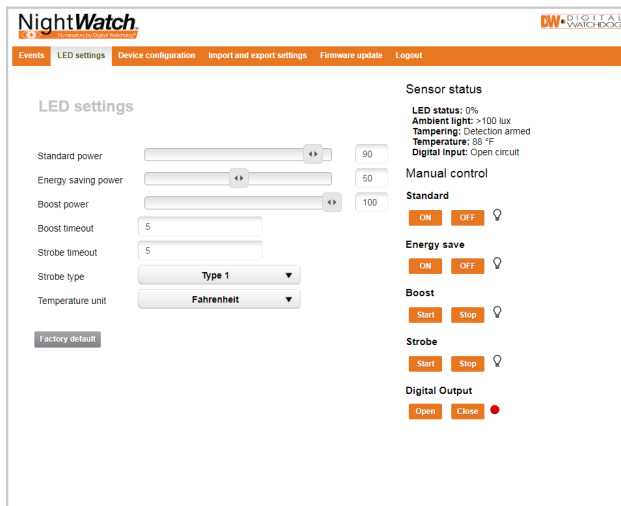
## STEP 3 - WEB INTERFACE

### Login

1. Open a web browser.
2. In the address field, type in the selected unit IP address (see following).
3. The user interface login page is shown.
4. Create your username and password. When connecting to the for the first time, a password must be set.

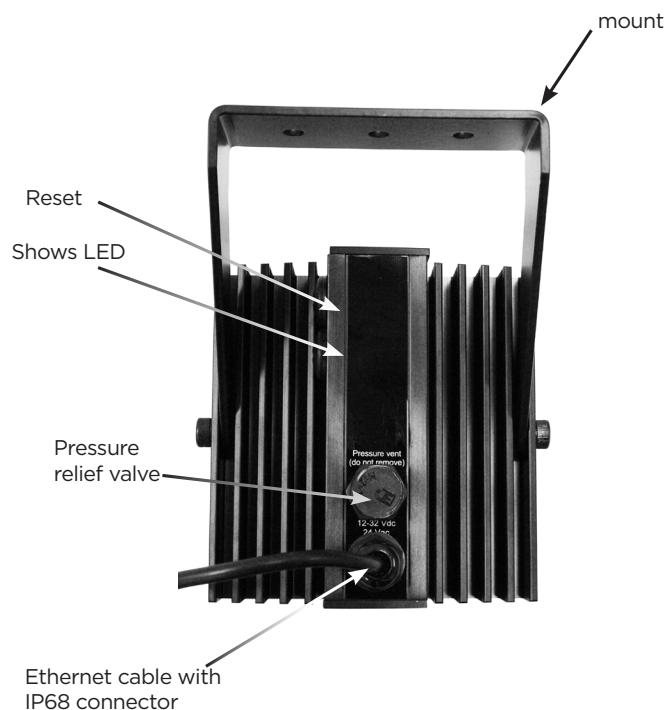
**NOTE:** When using the device for the first time, or if a factory reset has been made, the following settings are used.

**Default IP address:** 192.168.1.10



## STEP 4 - RESETTING THE ILLUMINATOR

Follow the diagram below to locate the reset button on the side of the illuminator. Unscrew and open the cap and press reset button for 3-5 seconds, until the white light or IR flashes.



### Safety Warning

- When the lamp is running, it is hot to touch. Before touching switch off the illuminator and allow to cool for a minimum of 10 minutes.
- The illuminator should be positioned so that prolonged staring into the illuminator at a distance closed than 1m is not expected.
- The light source of this illuminator is not replaceable, when the light source reaches its end of life the whole illuminator should be replaced.
- If the flexible power cord of the illuminator is damaged it should be exclusively replaced by an authorized service agent.
- This equipment is not suitable for us in locations where children are likely to be present.

**RISK  
GROUP 2  
CAUTION  
IR emitted  
from this  
product**

