

To: DW® customers
Date: June 4, 2018
Re: VMAX® IP Plus™ and SPOT™
firmware update

VMAX® IP Plus™ NVR and Spot™ firmware update

Applicable models: 1st and 2nd generation VMAX® IP Plus™ NVRs
Spot™ monitoring module (DW-HDSPOTMOD, DW-HDSPOTMOD16)

New firmware version: 1.2.9.7

Previous firmware version: VMAX® IP Plus™ NVRs: 1.2.9.2
Spot™ monitoring module: 1.2.7.2

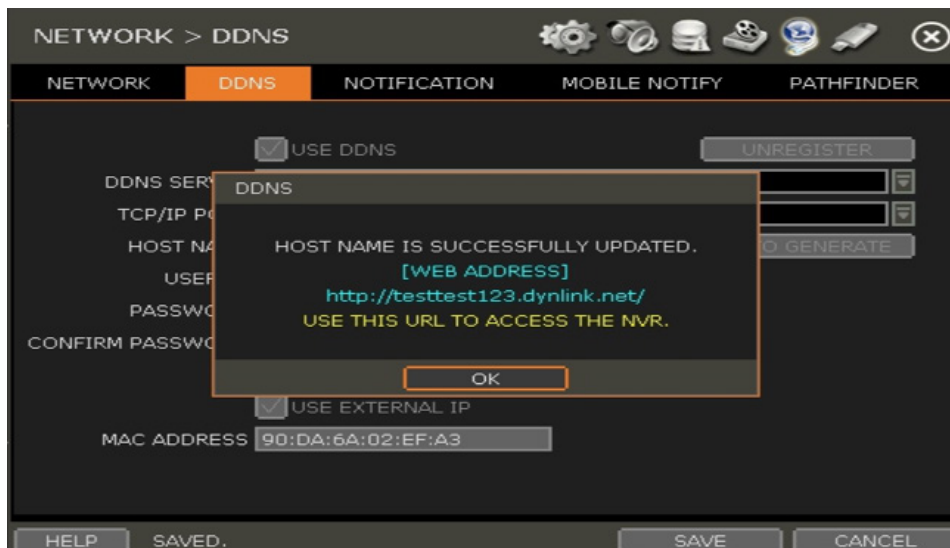
Release date: 06/04/2018

How to tell what generation NVR you have:

- 1st Generation NVRs will have the current firmware files starting with: hn-62xx, hn-63xx
- 2nd Generation NVRs will have the current firmware files starting with: hn-65xx, hn-66xx

New firmware notes:

1. Updated Lighttpd web server to version 1.4.49.
2. Fixed RTMP authentication issue on the Firefox and Google Chrome.
3. Provide DDNS address information. After registration, the DDNS address information will be displayed in the NVR.



[Schedule a demo today >](#)

Learn how DW will increase your profitability.

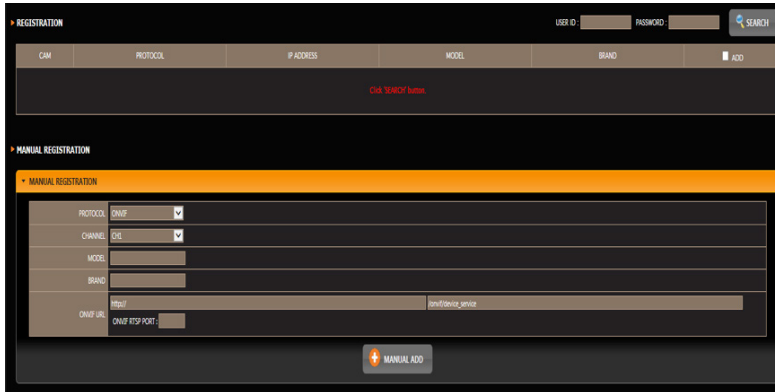
866.446.3595

sales@dwcc.tv



www.digital-watchdog.com

4. HD Spot[™] Monitor – Added manual camera registration function on the web client.
- If users want to connect to an IP camera in a different network, cameras can be added manually using the manual registration function on the web client.



- [RECORD] – [REGISTRATION]
 1. Input camera's ID & Password
 2. Select protocol of the camera. Registration is available with one of the following.
 - RTSP URL or ONVIF URL
 3. Select channel number to register and click manual add.

Firmware download info

1st generation NVRs:

- [VMAX[®] IP Plus[™] 9 channel 4-PoE](#)
- [VMAX[®] IP Plus[™] 12 channel 8-PoE](#)
- [VMAX[®] IP Plus[™] 16 channel 8-PoE](#)
- [VMAX[®] IP Plus[™] 16 channel 16-PoE](#)

2nd generation NVRs:

- [VMAX[®] IP Plus[™] 9 channel 4-PoE](#)
- [VMAX[®] IP Plus[™] 12 channel 8-PoE](#)
- [VMAX[®] IP Plus[™] 16 channel 16-PoE](#)

Spot monitoring module:

- [Spot[™] monitoring module 4 channel](#)
- [Spot[™] monitoring module 16 channel](#)

For more information or technical support

DW technical support
Toll free: 866.446.3595
digital-watchdog.com/contact-tech-support/

Schedule a demo today >

Learn how DW will increase your profitability.